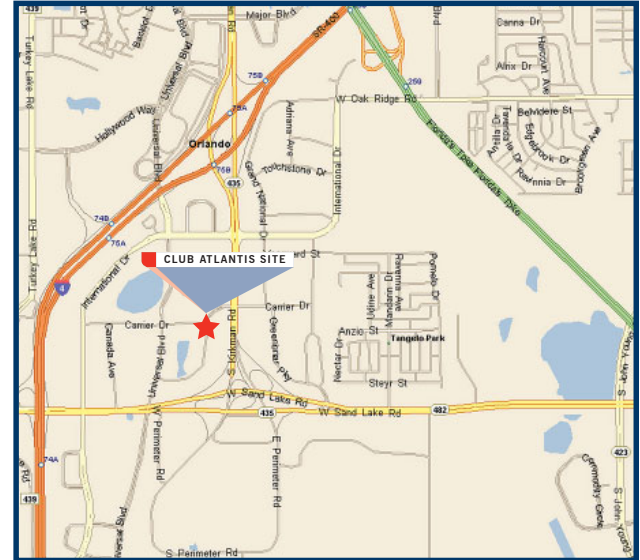


VIEW FROM LAKEHURST DRIVE



SITE LOCATION

5800/5850 LAKEHURST DRIVE



Club Atlantis Site

7.37 ± ACRES AC-3/SP
23,000 SF OFFICE BUILDING

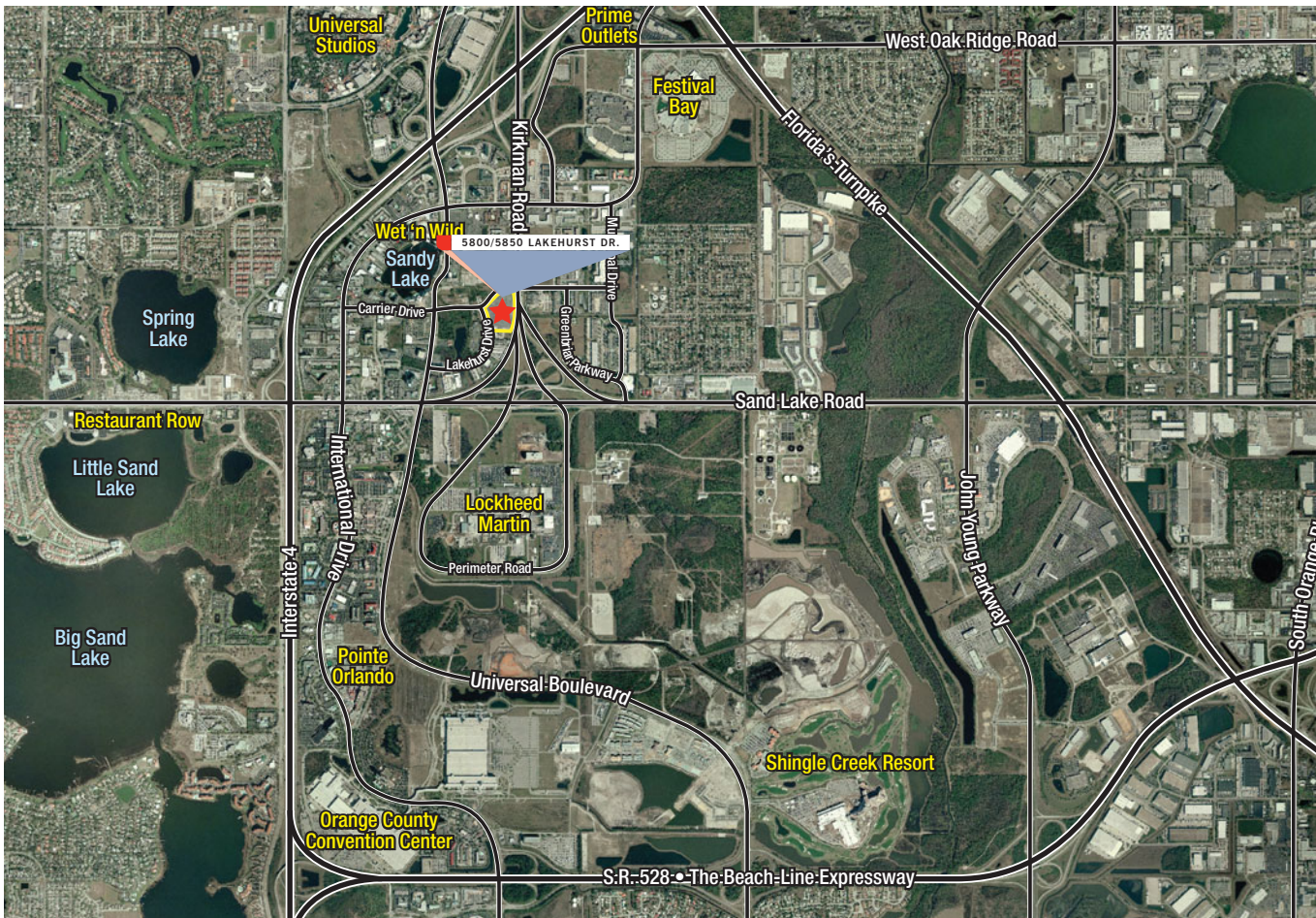
www.KirkmanSite.com

EXCLUSIVELY LISTED BY
Cushman & Wakefield of Florida, Inc
 800 N. Magnolia Avenue, Suite 450 Orlando, Florida, 32803
 P: 407-841-8000

Margery Johnson, Senior Director, Land Brokerage Services
margery.johnson@cushwake.com



CUSHMAN & WAKEFIELD is the world's largest privately-held commercial real estate services firm. Founded in 1917, it has 230 offices in 58 countries and 15,000 employees. The firm represents a diverse customer base ranging from small businesses to Fortune 500 companies. It offers a complete range of services within four primary disciplines: Transaction Services, including tenant and landlord representation in office, industrial and retail real estate; Capital Markets, including property sales, investment management, valuation services, investment banking, debt and equity financing; Client Solutions, including integrated real estate strategies for large corporations and property owners, and Consulting Services, including business and real estate consulting. A recognized leader in global real estate research, the firm publishes a broad array of proprietary reports available on its online Knowledge Center at www.cushmanwakefield.com.



CLUB ATLANTIS SITE - 7.37 ACRES - ORLANDO FLORIDA

APPROXIMATE DISTANCE TO:

International Drive	0.5 miles
Wet 'n Wild	0.4
Lockheed Martin	1.5
Universal Theme parks	2.0
Orlando Convention Center	2.5
Planned Megastron Complex	0.2

EXISTING OFFICE BUILDING

LOCATION	23,190 gross square feet, two stories
YEAR	1983
OCCUPANCY	Vacant; demised for multi-tenant use
PARKING	118 slots

CONTACT

Margery Johnson, Senior Director, Land Brokerage Services; margery.johnson@cushwake.com
Cushman & Wakefield of Florida, Inc, 800 N. Magnolia Avenue, Suite 450, Orlando, Florida, 32803 P: 407-841-8000

PROPERTY HIGHLIGHTS

- LOCATION** 5800 and 5850 Lakehurst Drive, Orlando, FL 32819; in the "tourist corridor." Also fronts Kirkman Road.
- SIZE** 7.37 +/- acres on 2 lots
- ZONING** High density AC-3 / SP in the City of Orlando
- FRONTAGE** 602' +/- on Lakehurst Drive
578' +/- on Kirkman Road



A C - 3 / SP ZONING

ZONING

AC-3/SP
 Metropolitan Activity Center District – 3 / specially planned area; multi- family, office, retail, other commercial uses.

LAND USE

M-AC- Metropolitan Activity Center; various commercial uses.

DENSITY

Highest commercial and residential density outside of downtown Orlando.



No warranty or representation, express or implied, is made as to the accuracy of the information contained herein, and the same is submitted subject to errors, omissions, change of price, rental or other conditions, withdrawal without notice, and to any special listing conditions imposed by our principals. Licensed RE broker. A commission computed and earned in accordance with the rates and conditions of our agency agreement with our principal, when received from our principal, will be paid to a cooperating broker who consummates a closing and transfer of title between our principal and purchaser. (A copy of the rates and conditions referred to above are available upon request.)