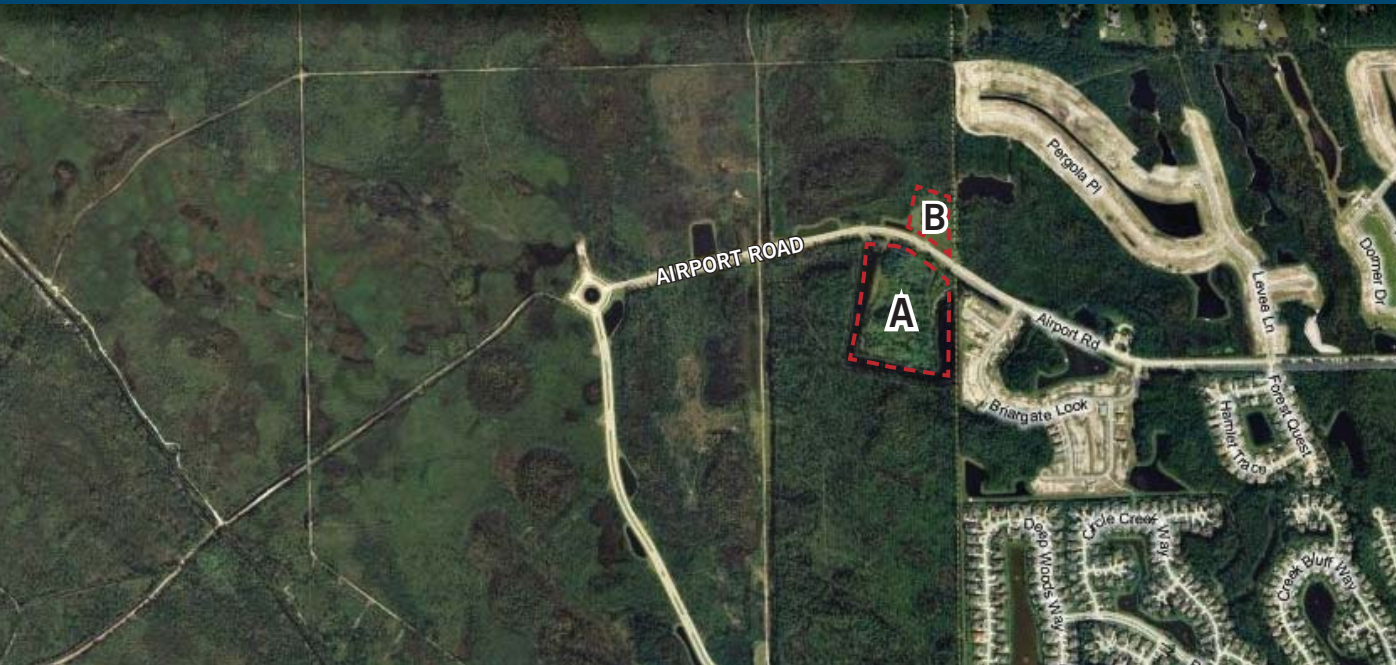


Hunter's Ridge Land, Flagler County, FL

2 sites: 17.12-acre & 3.15 acre zoned PUD/mixed use for SALE

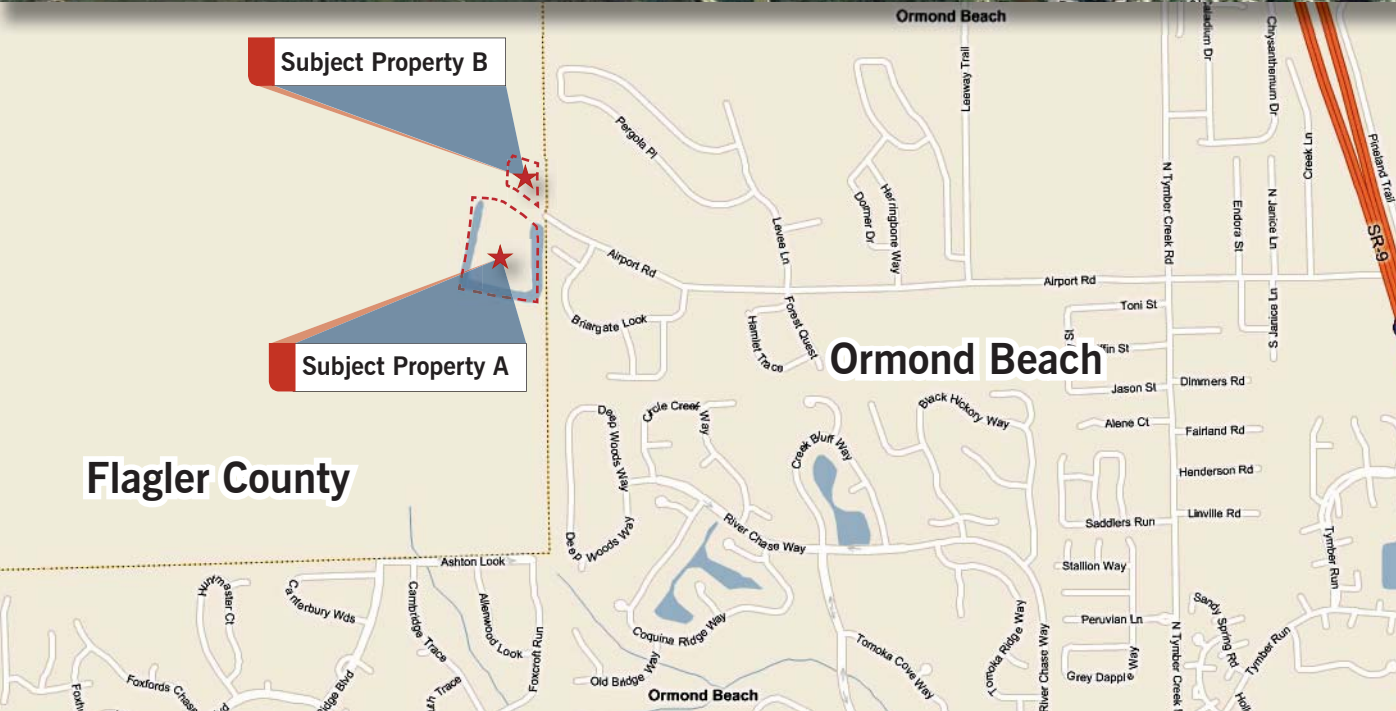
AN EXCLUSIVE LISTING FROM CUSHMAN & WAKEFIELD IN JACKSONVILLE, FLORIDA



TWO SITES:
A) 17.12 ACRE
B) 3.15 ACRE

**ZONED PUD, MIXED USE LAND USE
(LOW TO MEDIUM DENSITY)**

PRICE: \$1,500,000



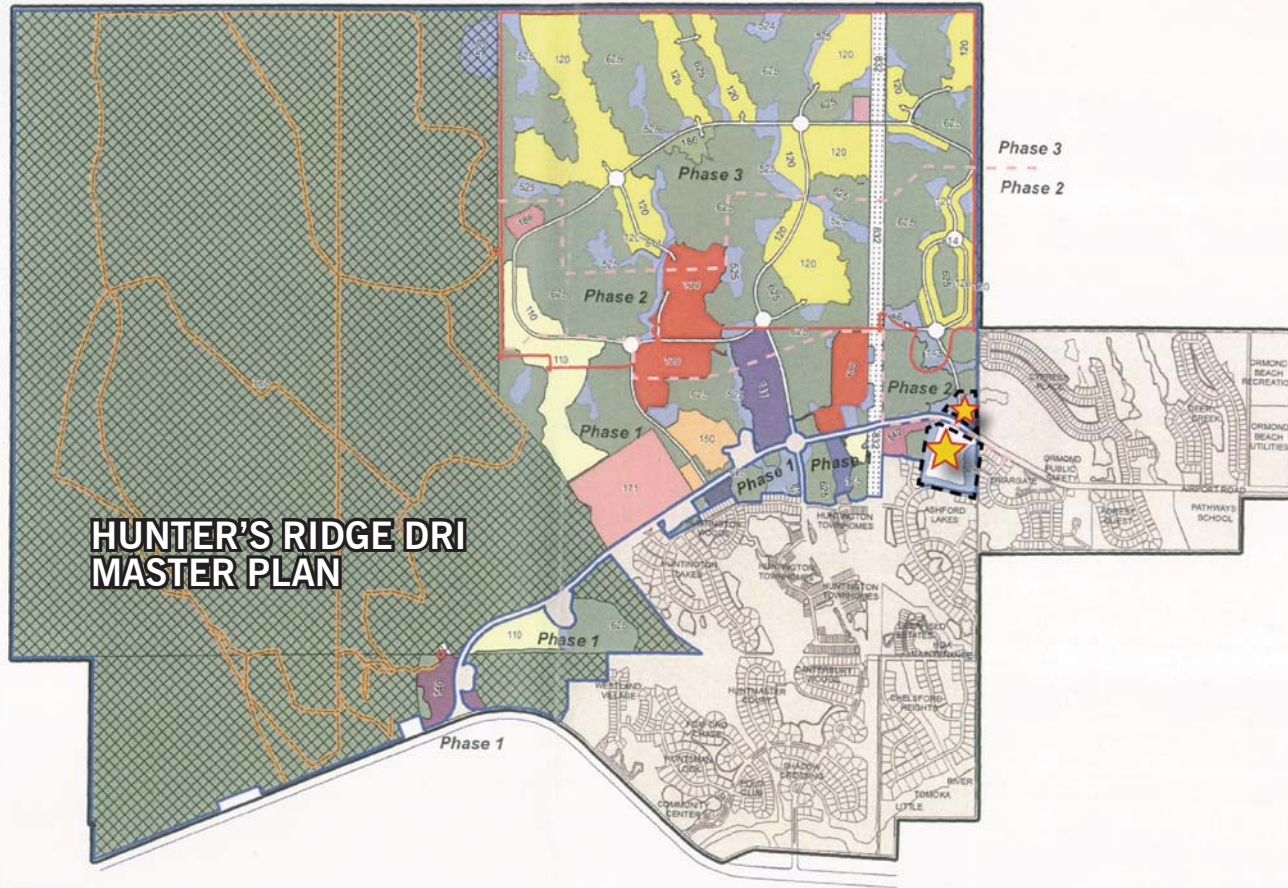
FOR ADDITIONAL INFORMATION, PLEASE CONTACT:

Logan Holz
Senior Director, Land Brokerage
904.380.8346
logan.holz@cushwake.com



Hunter's Ridge Land, Flagler County, FL

2 sites: 17.12-acre & 3.15 acre zoned PUD/mixed use for SALE



POPULATION DEMOGRAPHICS

3 MILES - 9,500
5 MILES - 32,500
10 MILES - 139,000

FOR ADDITIONAL INFORMATION, PLEASE CONTACT:

Logan Holz
Senior Director, Land Brokerage
904.380.8346
logan.holz@cushwake.com

Cushman & Wakefield of Florida, Inc.
13901 Sutton Park Drive South, Suite 170
Jacksonville, Florida 32224
(904) 731-9500 phone/(904) 731-7300 fax



No warranty of representation, expressed or implied, is made as to the accuracy of the information contained herein, and same is submitted subject to errors, omissions, change of price, rental or other conditions, withdrawal without notice, and to any special listing conditions imposed by our principals.