

For Sale LAND

1.83 Acres, Prime Commercial Site Riverview (Tampa), FL

LOCATION: 1.83 Acres, NWQ of Boyette Road and Balm Riverview Road, Riverview, Florida, 33569.

SIZE: 1.83 Acres

PRICE: \$1,275,000 (\$16.00/PSF)

ZONING: PD-MU – Planned Development
Mixed Use

UTILITIES: At site

DEMOGRAPHICS (3-Mile Radius)

Population:	48,932
Average HH Income:	\$79,704
Median Income:	\$59,630
Retail Sales	\$717 Million

COMMENTS:

- Signalized intersection.
- “PAD-READY” site.
- Adjacent to Riverview High School. Located in close proximity to Publix and to U.S. Highway 301.
- 500+ feet of frontage on Boyette Road (25,000 vehicles per day).



For more information please contact:

PATRICK G. BERMAN

Senior Director
(813) 204 - 5363
Patrick.berman@cushwake.com

BRUCE K. ERHARDT, ALC

Executive Director
(813) 223 - 6300
Bruce.erhardt@cushwake.com



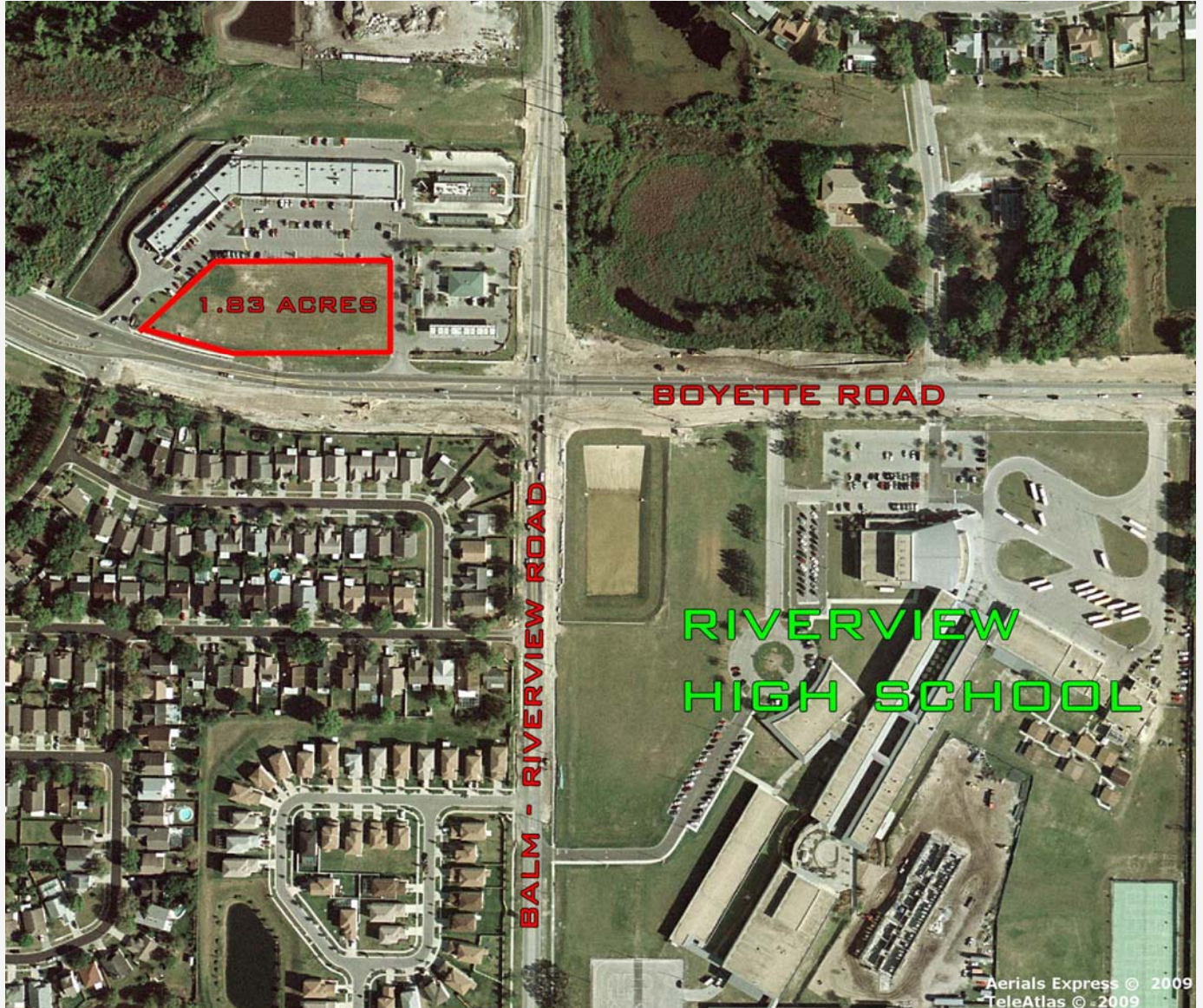
A No warranty or representation, express or implied, is made as to the accuracy of the information contained herein, and same is submitted subject to errors omissions, change of price, rental or other conditions, withdrawal without notice, and to any specific listing conditions, imposed by our principals.

One Tampa City Center, Suite 3600
Tampa, FL 33602

For Sale LAND

1.83 Acres, Prime Commercial Site
Riverview (Tampa), FL

Aerial Overview:



For more information please contact:

PATRICK G. BERMAN

Senior Director
(813) 204 - 5363
Patrick.berman@cushwake.com

BRUCE K. ERHARDT, ALC

Executive Director
(813) 223 - 6300
Bruce.erhardt@cushwake.com

No warranty or representation, express or implied, is made as to the accuracy of the information contained herein, and same is submitted subject to errors omissions, change of price, rental or other conditions, withdrawal without notice, and to any specific listing conditions, imposed by our principals.



One Tampa City Center, Suite 3600
Tampa, FL 33602