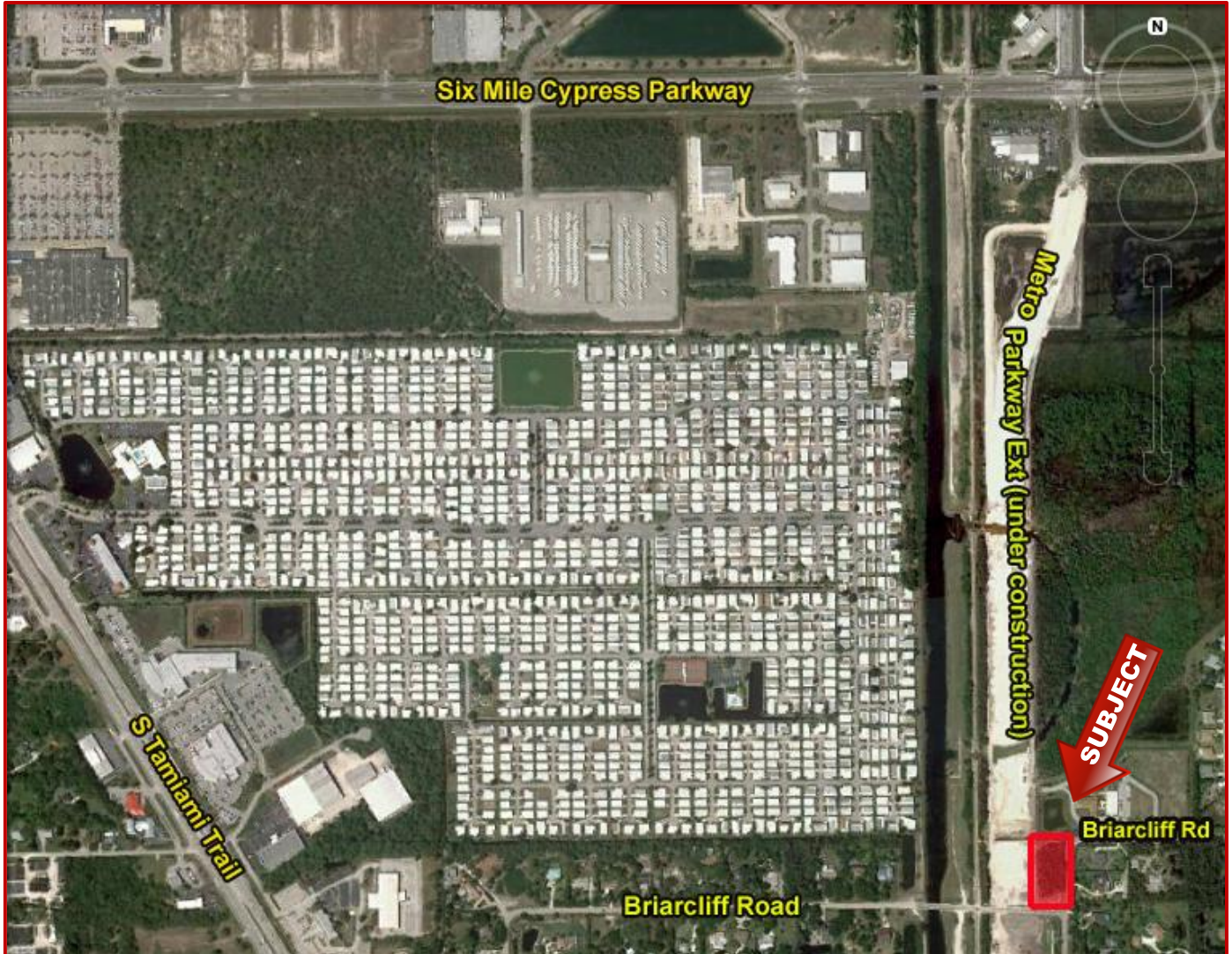


Commercial Lot | 1.03 Acres

6091 Briarcliff Road, Fort Myers, FL 33912

For Sale



ZONING: CPD – Commercial Planned Development

STRAP #: 31-45-25-00-00004.1000

SIZE: 1.03 Acres

PRICE: \$145,000.00

COMMENTS:

- Approved Development Order for a 6,000 square foot office building with 5 per 1,000 parking ratio which allows for general office & medical office.
- Site will benefit from the exposure of fronting on the new Metro Parkway Extension.
- Briarcliff is the only intersection on Metro Parkway between Six Mile Cypress and Alico Road.

For more information please contact:

GARY TASMAN

Executive Director
(239) 489-3600
gtasman@cpswfl.com

SHAWN STONEBURNER

Director
(239) 489-3600
sstoneburner@cpswfl.com

No warranty or representation, express or implied, is made as to the accuracy of the information contained herein, and same is submitted subject to errors omissions, change of price, rental or other conditions, withdrawal without notice, and to any specific listing conditions, imposed by our principals.

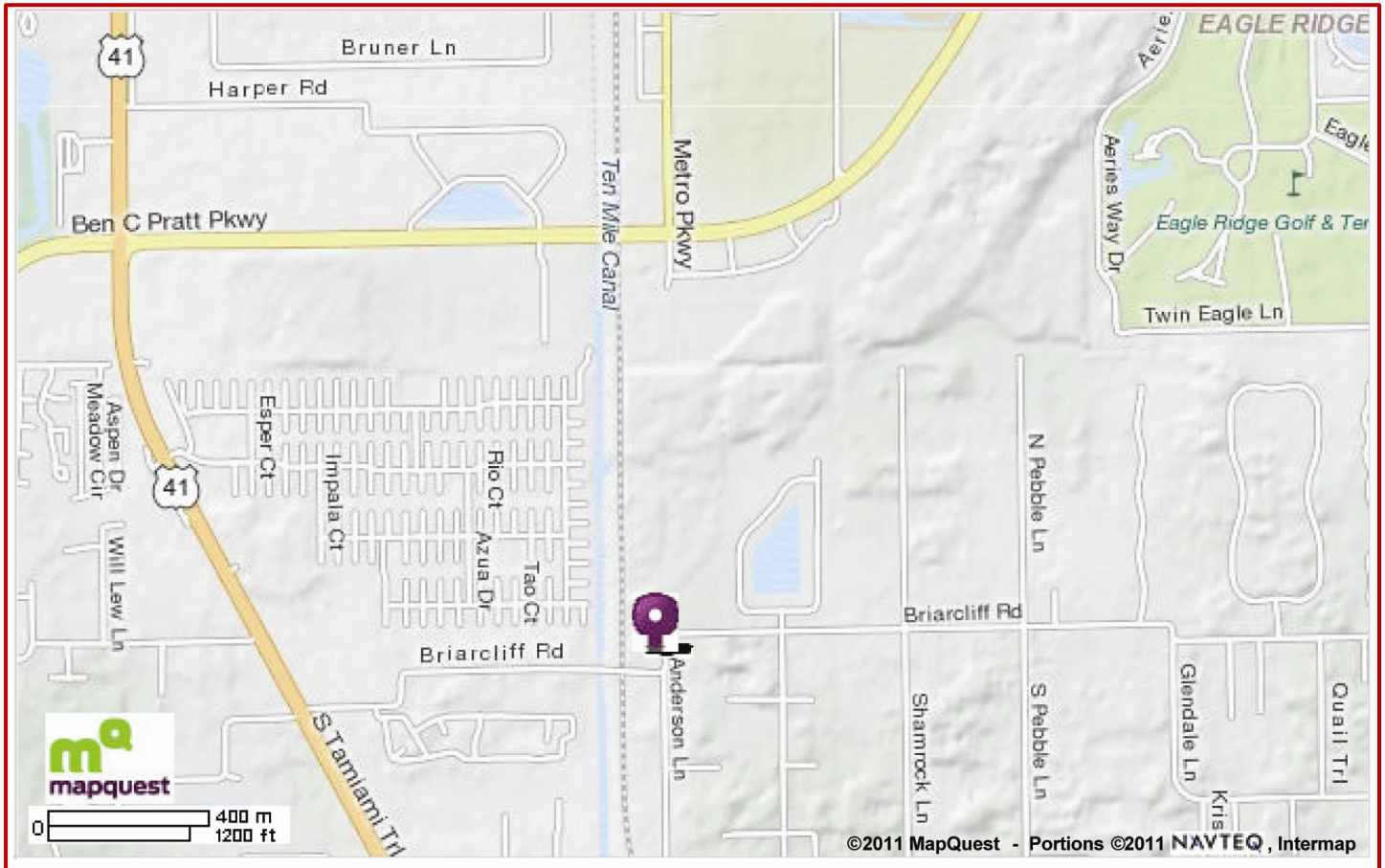


12800 University Drive, Suite 401, Fort Myers, Florida 33907

For Sale

Commercial Lot | 1.03 Acres

6091 Briarcliff Road, Fort Myers, FL 33912



No warranty or representation, express or implied, is made as to the accuracy of the information contained herein, and same is submitted subject to errors omissions, change of price, rental or other conditions, withdrawal without notice, and to any specific listing conditions, imposed by our principals.



12800 University Drive, Suite 401, Fort Myers, Florida 33907