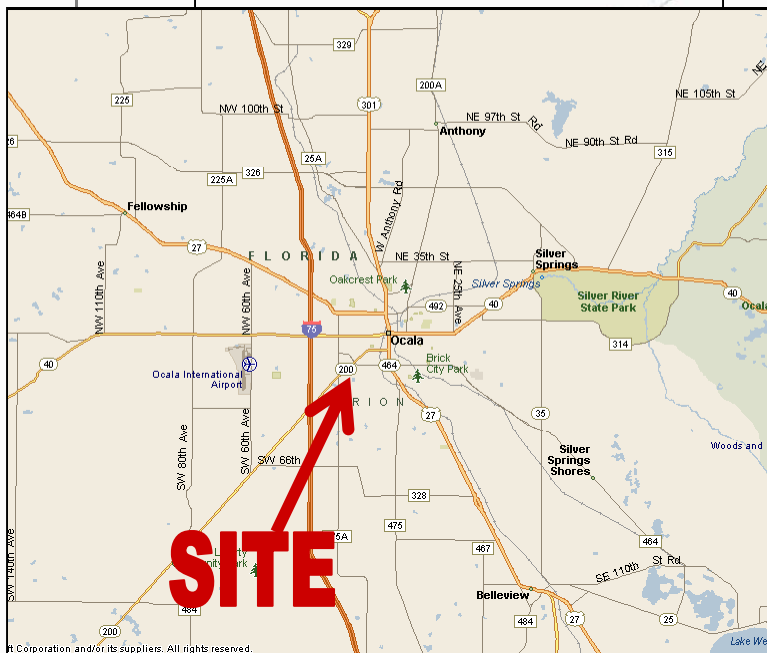
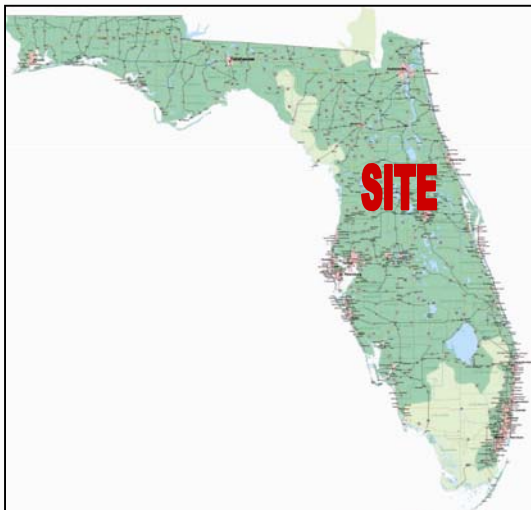


**Zero Lot Line
Single and TH/Condo
Land**

66 Villa / Single Family Paper Lots and 26 Acre Townhome / Condo Site

Ocala, Marion County, Florida



LOCATION: .8 miles south of SR 200, three miles east of I-75 in Ocala, Marion County, Florida.

ACCESS: Southwest 21st Circle.

SIZES: 66 Villa lots on 20 acres, up to 250 units townhome / condo units on 26 acres.

PRICE: Villa Lots \$18,900/Lot
Townhome / Condo \$15,000/Unit.

DISTANCES:

Target	.7 miles
Super Wal-Mart	1.3 miles
Paddock Mall	1.4 miles
College Park Elementary	2.0 miles
Publix	2.6 miles
Home Depot	2.7 miles
Osceola Middle	6.4 miles

COMMENTS:

- Part of Cala Hills Residential Villages, with 30,000 sf club house, pool and tennis on a 7 acre lake.
- 206 +/- existing homes are currently occupied within the development.
- In town location.
- Underground utilities.
- On site medical office park.
- 91.17% occupancy in Marion County. 1990 or later – 93.87% occupied.

For more information please contact:

BRUCE K. ERHARDT, ALC
Executive Director
(813) 223-6300
Bruce.erhardt@cushwake.com

PHILIP GLASSMAN, CCIM
Director
(813) 223-6300
Philip.glassman@cushwake.com

No warranty or representation, express or implied, is made as to the accuracy of the information contained herein, and same is submitted subject to errors omissions, change of price, rental or other conditions, withdrawal without notice, and to any specific listing conditions, imposed by our principals.



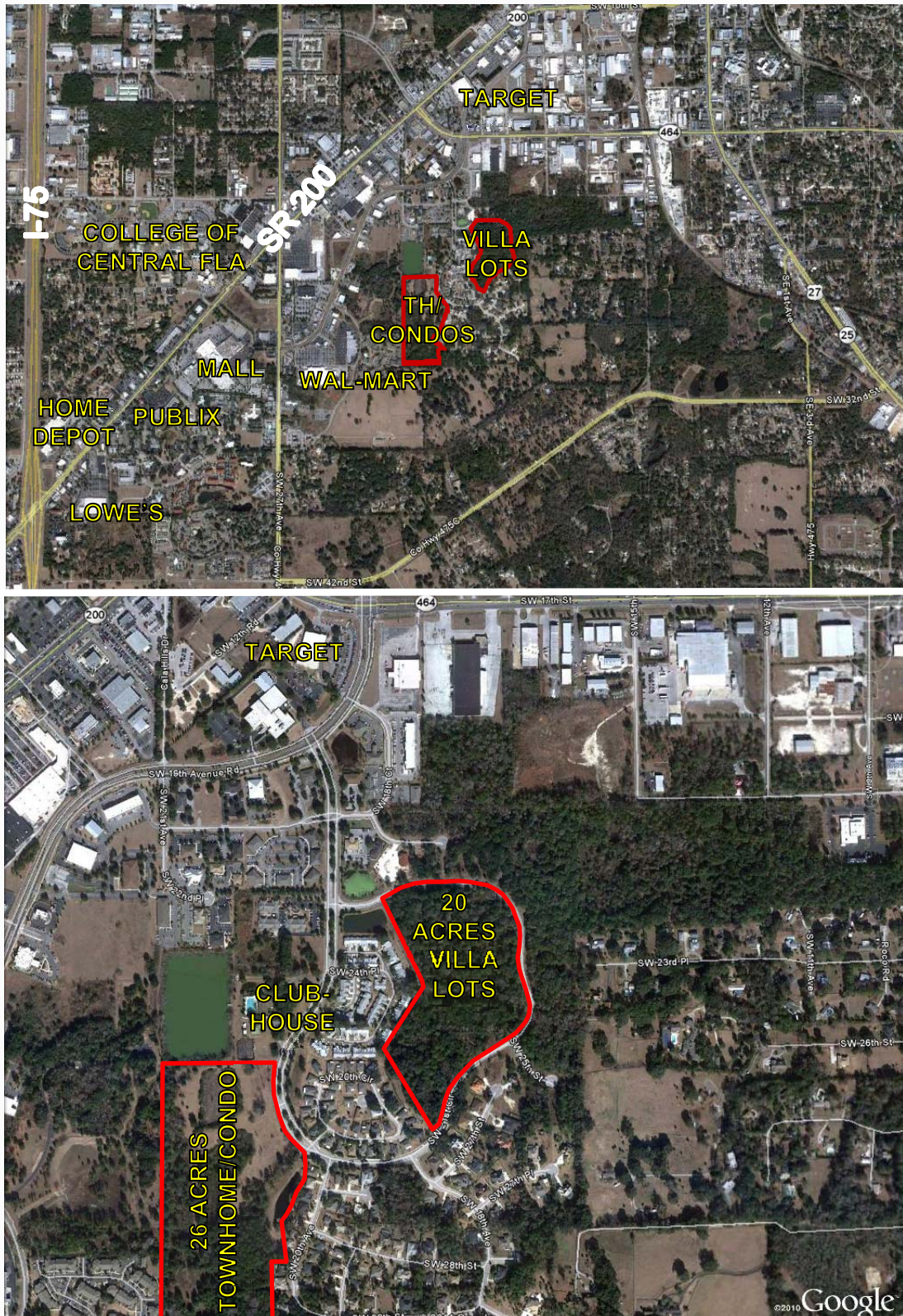
**CUSHMAN &
WAKEFIELD**
Global Real Estate SolutionsSM

One Tampa City Center, Suite 3600
Tampa, FL 33602

**Zero Lot Line
Single and TH/Condo
Land**

66 Villa / Single Family Paper Lots and 26 Acre Townhome / Condo Site

Ocala, Marion County, Florida



No warranty or representation, express or implied, is made as to the accuracy of the information contained herein, and same is submitted subject to errors omissions, change of price, rental or other conditions, withdrawal without notice, and to any specific listing conditions, imposed by our principals.