

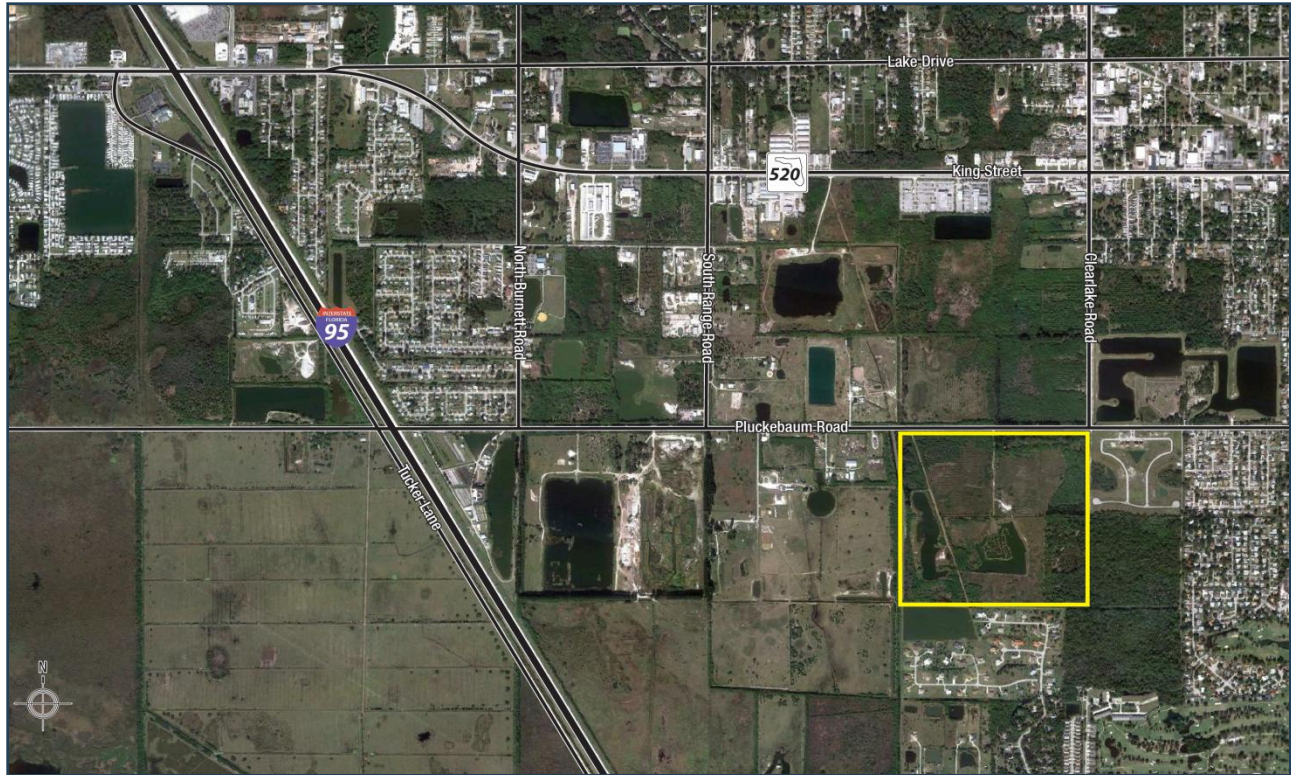


SINGLE FAMILY RESIDENTIAL SITE

Pluckebaum Road
Rockledge, Florida

LAND FOR SALE

155± Vacant Acres



Location: Pluckebaum Road, Rockledge, Florida. Near terminus of Clearlake Road in Brevard County

Access: SR 520 (has interchange at I-95). Ready access to US 1, Cocoa Beach and Merritt Island shops and beaches

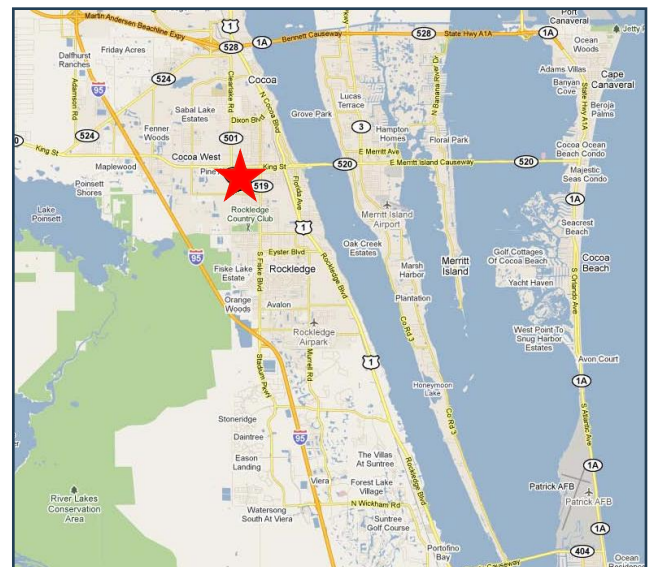
Size: 154.6± acres gross.

Amenities: Retail, restaurant, medical and recreational amenities abound

Future Land Use: Low Density Residential – PUD required

Schools: Golfview Elementary, Kennedy Middle, Rockledge High (per Brevard School Board maps)

Price: \$775,000



FOR MORE INFORMATION, PLEASE CONTACT:

Margery Johnson, CCIM, CIPS
Senior Director, Land Brokerage Services
(407) 541-4395
Margery.Johnson@cushwake.com

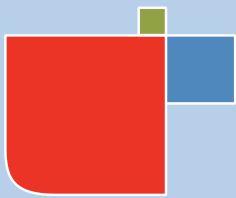
Andrew Slowik
Associate, Land Brokerage Services
(407) 541-4428
Andrew.Slowik@cushwake.com

Exclusively listed by:
CUSHMAN & WAKEFIELD OF FLORIDA, INC.
800 North Magnolia Avenue, Suite 450
Orlando, Florida 32803
(407) 841-8000
www.cushmanwakefield.com

A full commission computed and earned in accordance with the rates and conditions of our agency agreement with our principal, when received from our principal, will be paid to a cooperating broker who consummates a sublease which is unconditionally executed and delivered by and between sublandlord and subtenant. (A copy of the rates and conditions referred to above are available upon request.)

No warranty or representation, express or implied, is made as to the accuracy of the information contained herein, and same is submitted subject to errors omissions, change of price, rental or other conditions, withdrawal without notice, and to any specific listing conditions imposed by our principals.





SINGLE FAMILY RESIDENTIAL SITE

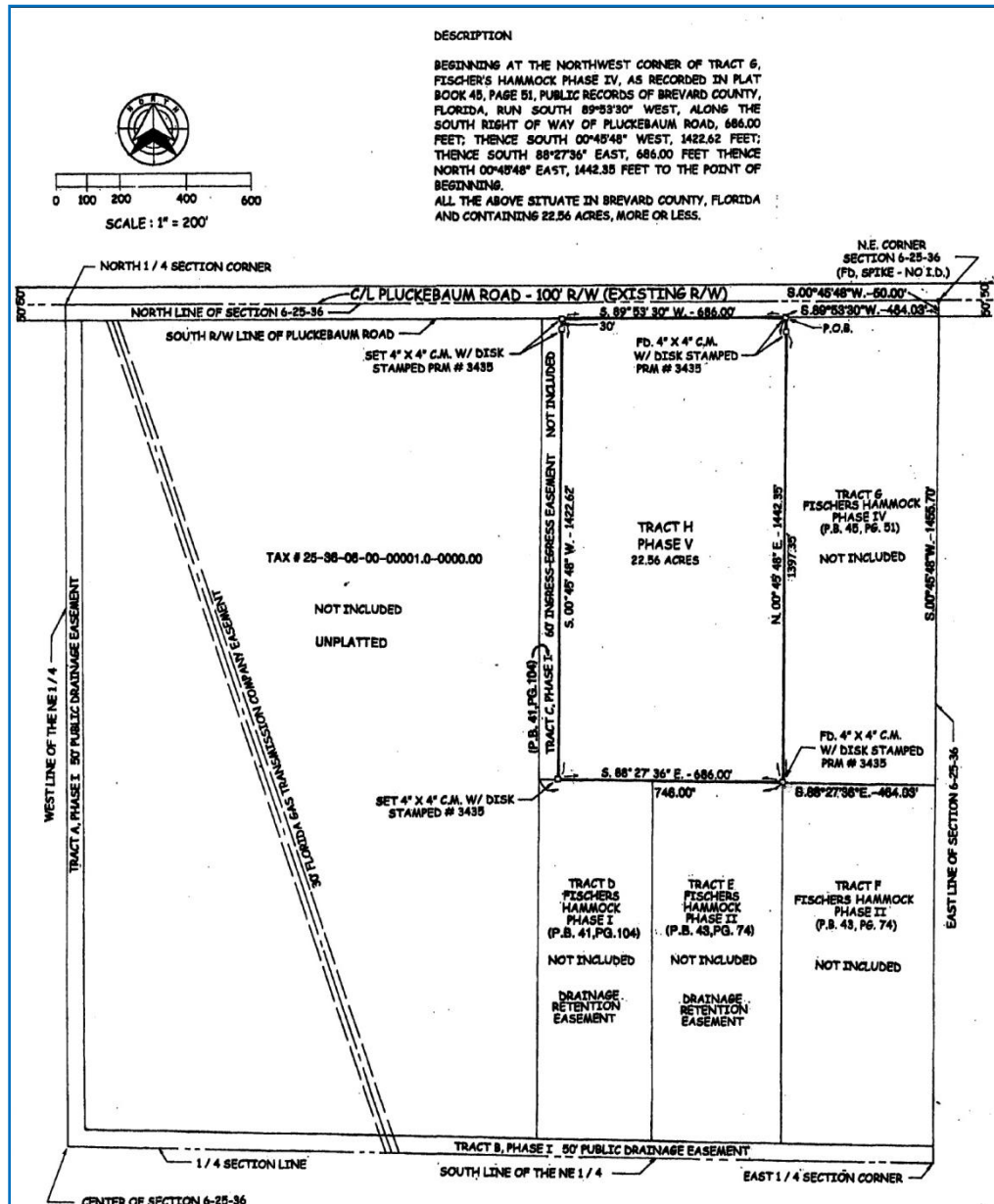
Pluckebaum Road
Rockledge, Florida

LAND FOR SALE

155± Vacant Acres

FISCHERS HAMMOCK PHASE V, SUBDIVISION CITY OF ROCKLEDGE, BREVARD COUNTY, FLORIDA

(Note—all parcels are included)



FOR MORE INFORMATION, PLEASE CONTACT:

Margery Johnson, CCIM, CIPS
Senior Director, Land Brokerage Services
(407) 541-4395
Margery.Johnson@cushwake.com

Andrew Slowik
Associate, Land Brokerage Services
(407) 541-4428
Andrew.Slowik@cushwake.com

Exclusively listed by:
CUSHMAN & WAKEFIELD OF FLORIDA, INC.
800 North Magnolia Avenue, Suite 450
Orlando, Florida 32803
(407) 841-8000
www.cushmanwakefield.com

A full commission computed and earned in accordance with the rates and conditions of our agency agreement with our principal, when received from our principal, will be paid to a cooperating broker who consummates a sublease which is unconditionally executed and delivered by and between sublandlord and subtenant. (A copy of the rates and conditions referred to above are available upon request.)

No warranty or representation, express or implied, is made as to the accuracy of the information contained herein, and same is submitted subject to errors omissions, change of price, rental or other conditions, withdrawal without notice, and to any specific listing conditions imposed by our principals.

