

For Sale LAND

11.44 Acres, Prime Mixed Use Site

U.S. Highway 41, Apollo Beach (Tampa Bay), FL



LOCATION: 5497 U.S. Highway 41, Apollo Beach, (Hillsborough County), Florida

SIZE: 11.44 Acres

PRICE: \$1,870,000 (or \$3.75/PSF)

ZONING: The Planned Development allows three development options offering retail, multifamily, office and up to 333 beds, or community for a community residential home. See web site for development options and site plan.

UTILITIES: At site

DEMOGRAPHICS (3-Mile Radius):

Population:	19,878
Average HH Income:	\$66,096
Median HH Income:	\$48,493
Sales:	\$270.8 Million

COMMENTS:

- 873 feet of frontage on U.S. Highway 41 (27,500 vehicles per day)
- Served by left turn median cut
- Adjacent to a Sweetbay anchored shopping center
- Located in close proximity to the upscale MiraBay community (1,700 homes)

For more information please contact:

PATRICK G. BERMAN

Senior Director
(813) 204 - 5363
Patrick.Berman@cushwake.com

BRUCE K. ERHARDT, ALC

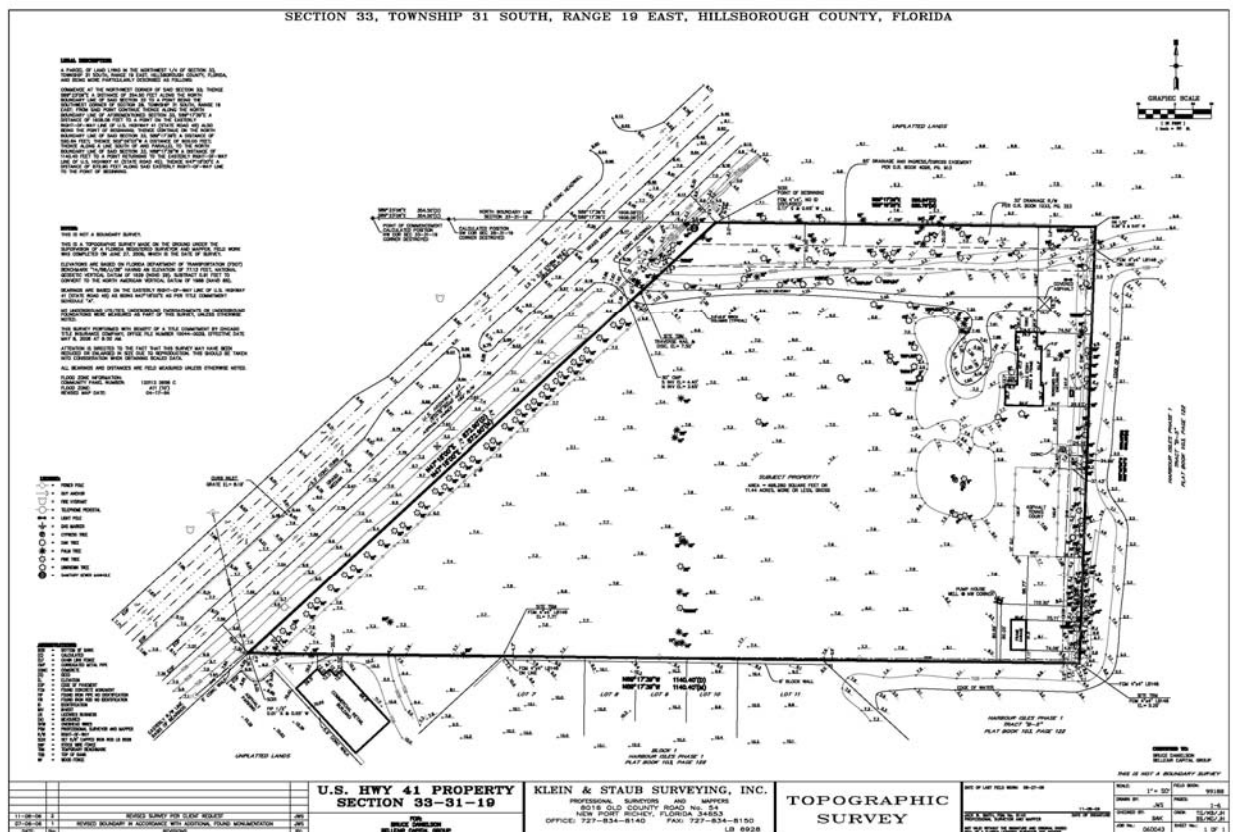
Executive Director
(813) 223 - 6300
Bruce.Erhardt@cushwake.com



A No warranty or representation, express or implied, is made as to the accuracy of the information contained herein, and same is submitted subject to errors omissions, change of price, rental or other conditions, withdrawal without notice, and to any specific listing conditions, imposed by our principals.

One Tampa City Center, Suite 3600
Tampa, FL 33602

For Sale LAND



No warranty or representation, express or implied, is made as to the accuracy of the information contained herein, and same is submitted subject to errors omissions, change of price, rental or other conditions, withdrawal without notice, and to any specific listing conditions, imposed by our principals.

One Tampa City Center, Suite 3600
Tampa, FL 33602