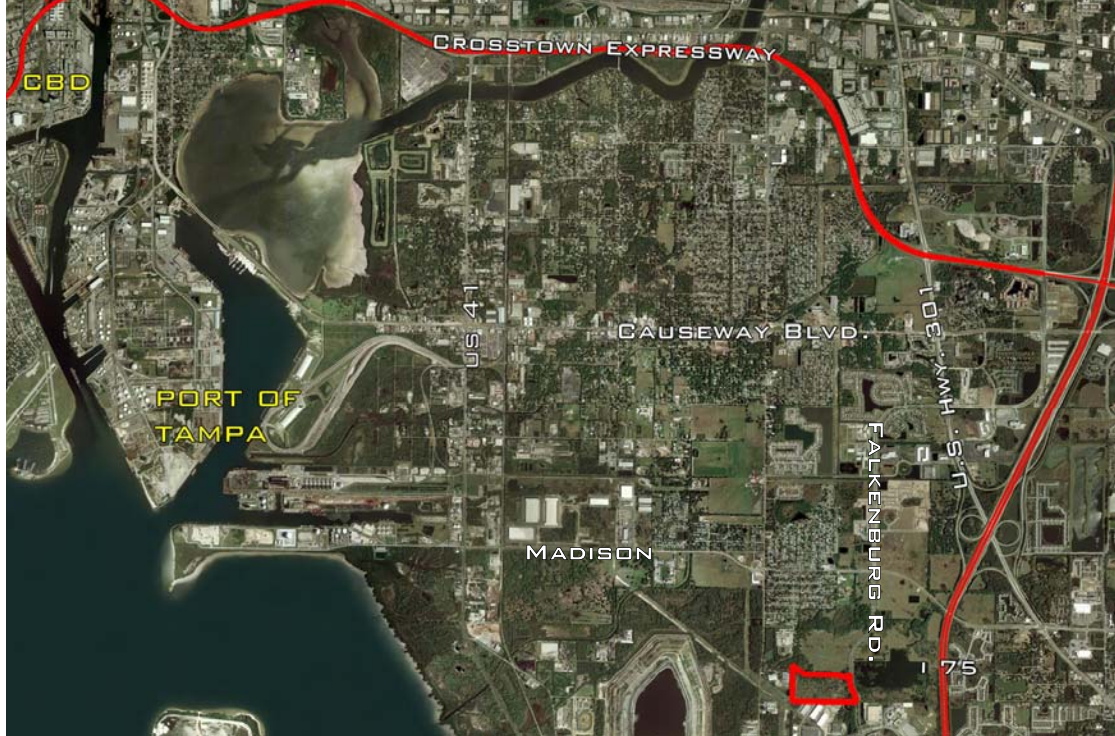


# HARVEST CREEK

Industrial Park Site  
Tampa, Florida

**FOR SALE LAND OR BUILD-TO-SUIT**

**49.32 Acres**



## MARKET HIGHLIGHTS

- Low labor costs
- Significant existing institutional and corporate base

## ACCESS

- North / South via US Highway 41, US Highway 301, Falkenburg Road, and I-75
- East / West via Madison Avenue and Riverview Drive

## PROFILE

Part of the 596 acre Harvest Creek mixed use development, entitled for up to 2,750 residential units, 125,000 sf of retail, 60,000 sf of office, and 770,000 sf of industrial warehousing / distribution uses.

## LOCATION

West side of Falkenburg Road, 2.7 miles southwest of the I-75 / US Highway 301 exit.

## LAND USE

Community Mixed Use

## SIZE

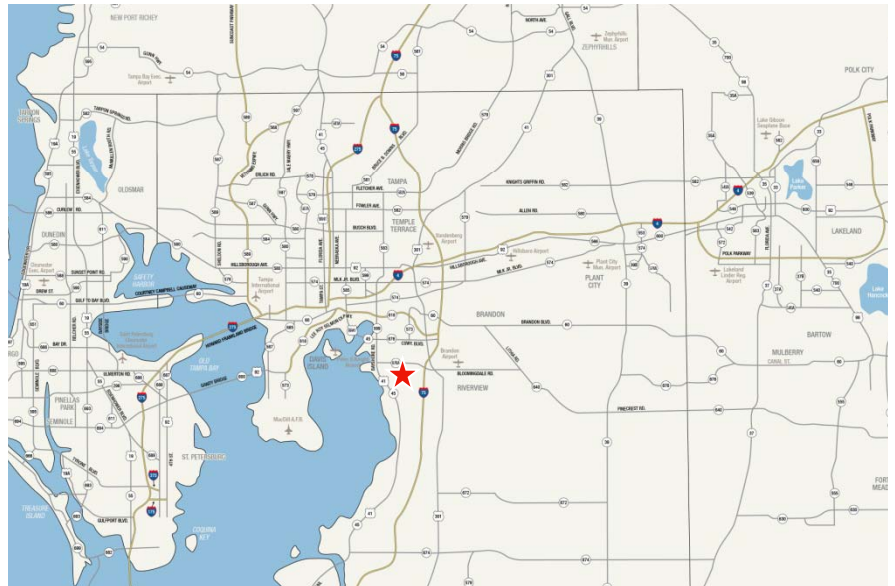
49.32 Acres

## ZONING

PD for up to 770,000 sf. M and CI uses, Hillsborough County

## UTILITIES

Utilities are at the site. Electric provided by Tampa Electric Company.



## FOR MORE INFORMATION, PLEASE CONTACT:

**Bruce K. Erhardt, ALC**

Executive Director

(813) 223-6300

bruce.erhardt@cushwake.com

**Rian Smith**

Director

(813) 223-6300

rian.smith@cushwake.com

## CUSHMAN & WAKEFIELD OF FLORIDA, INC.

One Tampa City Center, Suite 3600

Tampa, Florida 33602

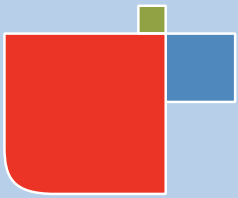
(813) 223-6300

[www.cushwakelandfl.com/tampa](http://www.cushwakelandfl.com/tampa)

The depiction in the included photograph of any person, entity, sign, logo or property, other than Cushman & Wakefield's (C&W) client and the property offered by C&W, is incidental only, and is not intended to connote any affiliation, connection, association, sponsorship or approval by or between that which is incidentally depicted and C&W or its client.

This listing shall not be deemed an offer to lease, sublease or sell such property; and, in the event of any transaction for such property, no commission shall be earned by or payable to any cooperating broker except if otherwise provided pursuant to the express terms, rates and conditions of C&W's agreement with its principal, if, as and when such commission (if any) is actually received from such principal. (A copy of the rates and conditions referred to above with respect to this property is available upon request.)



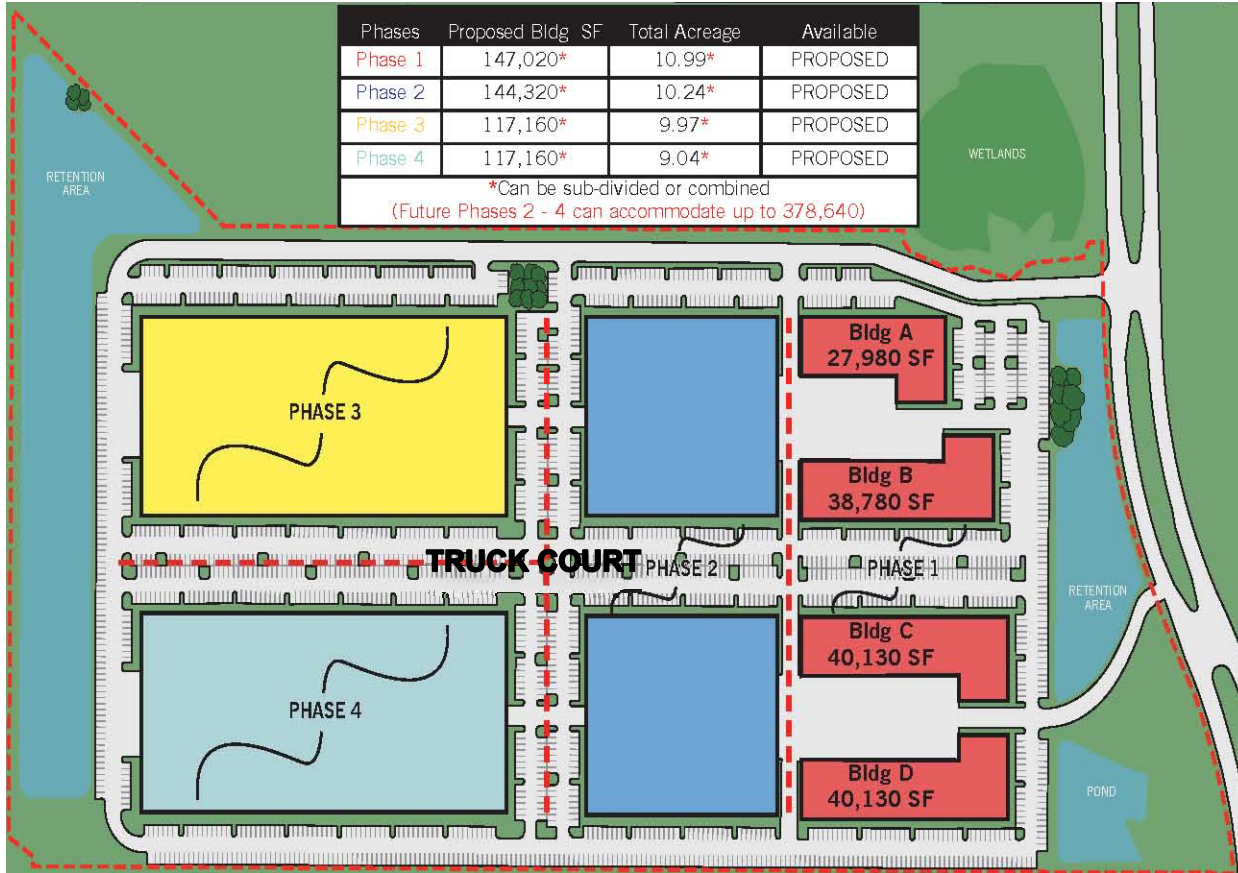


# HARVEST CREEK

Industrial Park Site  
Tampa, Florida

**FOR SALE LAND OR BUILD-TO-SUIT**

**49.32 Acres**



## DISTANCES

- I-75 – 2.7 Miles
- Brandon Town Center Mall – 4.7 Miles
- I-4 – 9.8 Miles
- Tampa CBD – 9.9 Miles
- Tampa Int'l Airport – 16.4 Miles

## ENGINEERING STATUS

- Property has been surveyed. Wetland delineations accepted by EPC.
- Platted
- Water Management completed

## WEBSITE

[www.cushwakelandfl.com/tampa/listing-detail.html?listing\\_id=418](http://www.cushwakelandfl.com/tampa/listing-detail.html?listing_id=418)

## PRICE

\$2.75/sf



## FOR MORE INFORMATION, PLEASE CONTACT:

**Bruce K. Erhardt, ALC**

Executive Director

(813) 223-6300

[bruce.erhardt@cushwake.com](mailto:bruce.erhardt@cushwake.com)

**Rian Smith**

Director

(813) 223-6300

[rian.smith@cushwake.com](mailto:rian.smith@cushwake.com)

## CUSHMAN & WAKEFIELD OF FLORIDA, INC.

One Tampa City Center, Suite 3600

Tampa, Florida 33602

(813) 223-6300

[www.cushwakelandfl.com/tampa](http://www.cushwakelandfl.com/tampa)

The depiction in the included photograph of any person, entity, sign, logo or property, other than Cushman & Wakefield's (C&W) client and the property offered by C&W, is incidental only, and is not intended to connote any affiliation, connection, association, sponsorship or approval by or between that which is incidentally depicted and C&W or its client.

This listing shall not be deemed an offer to lease, sublease or sell such property; and, in the event of any transaction for such property, no commission shall be earned by or payable to any cooperating broker except if otherwise provided pursuant to the express terms, rates and conditions of C&W's agreement with its principal, if, as and when such commission (if any) is actually received from such principal. (A copy of the rates and conditions referred to above with respect to this property is available upon request.)

