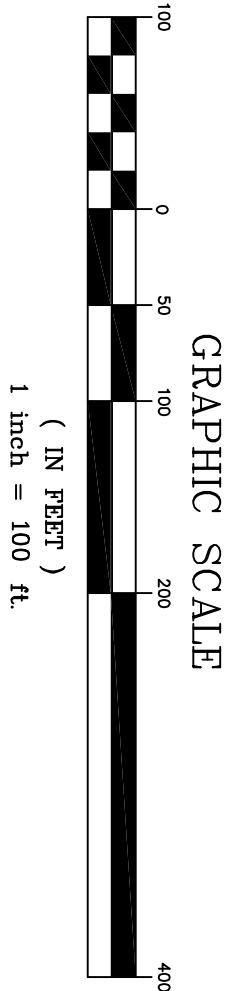
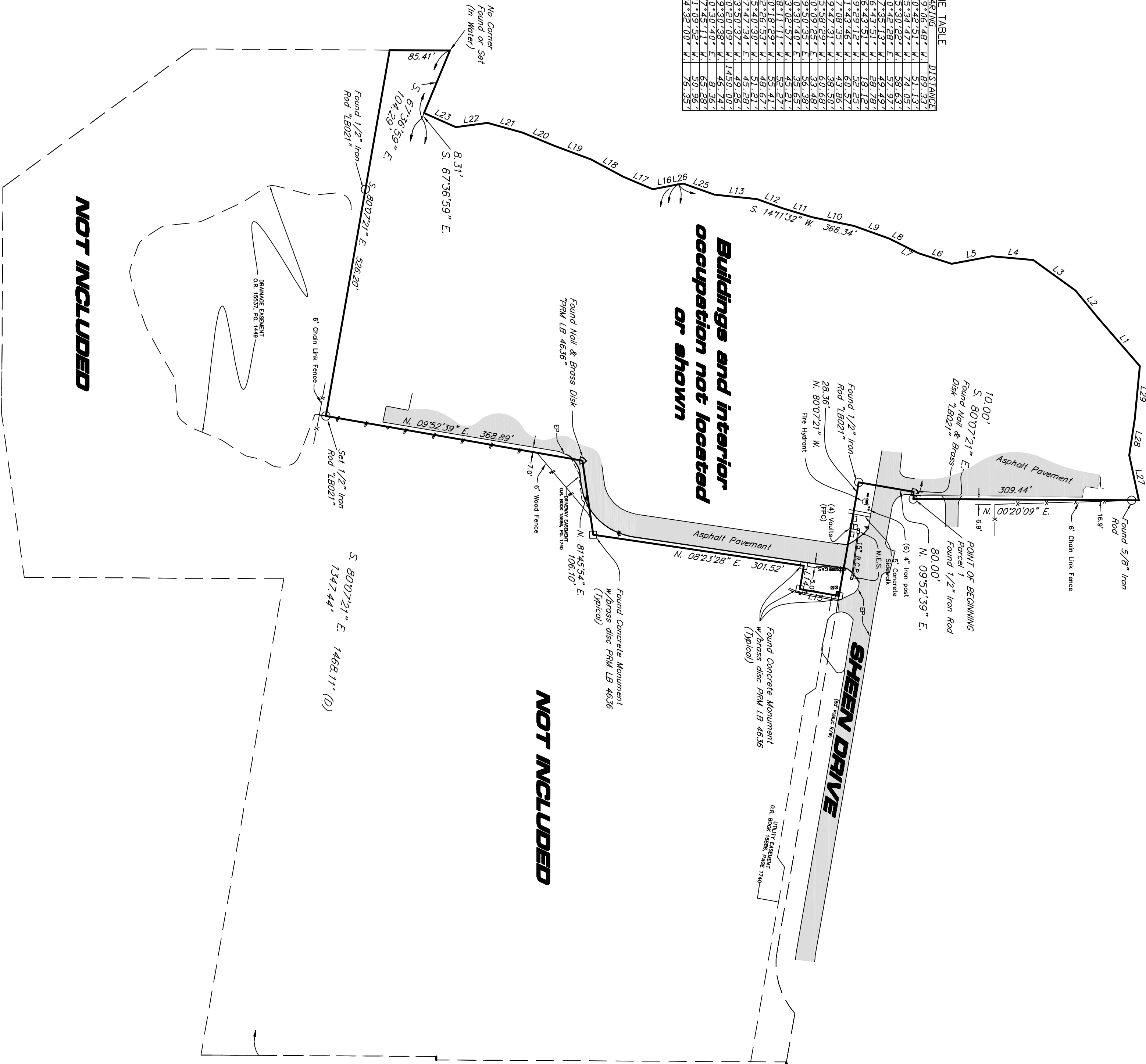


Bearings shown hereon are based on assumed datum. The East boundary of the Northwest 1/4 of Section 1, Township 31 South, Range 15 West, Pinellas County, Florida, bears S.002°03'W.



- LEGEND**
- Fire Hydrant
  - Electrical Transformer
  - Deed
  - Light Pole
  - Reinforced Concrete Pipe
  - Witness Post (Cass)
  - Sign Single Support
  - Misc Post
  - Mitered End Section
  - Grate Inlet
  - Fire Hydrant
  - Spot Elevation
  - Spot Elevation at Edge of Pavement
  - Spot Elevation at Back of Curb
  - Mitered End Section
  - Florida Power Corporation

LINE	BEARING	DISTANCE
1	S. 80°42'51" W.	91.13'
2	S. 89°54'42" W.	84.08'
3	S. 89°54'42" W.	84.08'
4	S. 89°54'42" W.	84.08'
5	S. 89°54'42" W.	84.08'
6	S. 89°54'42" W.	84.08'
7	S. 89°54'42" W.	84.08'
8	S. 89°54'42" W.	84.08'
9	S. 89°54'42" W.	84.08'
10	S. 89°54'42" W.	84.08'
11	S. 89°54'42" W.	84.08'
12	S. 89°54'42" W.	84.08'
13	S. 89°54'42" W.	84.08'
14	S. 89°54'42" W.	84.08'
15	S. 89°54'42" W.	84.08'
16	S. 89°54'42" W.	84.08'
17	S. 89°54'42" W.	84.08'
18	S. 89°54'42" W.	84.08'
19	S. 89°54'42" W.	84.08'
20	S. 89°54'42" W.	84.08'
21	S. 89°54'42" W.	84.08'
22	S. 89°54'42" W.	84.08'
23	S. 89°54'42" W.	84.08'
24	S. 89°54'42" W.	84.08'
25	S. 89°54'42" W.	84.08'
26	S. 89°54'42" W.	84.08'
27	S. 89°54'42" W.	84.08'
28	S. 89°54'42" W.	84.08'
29	S. 89°54'42" W.	84.08'
30	S. 89°54'42" W.	84.08'
31	S. 89°54'42" W.	84.08'
32	S. 89°54'42" W.	84.08'
33	S. 89°54'42" W.	84.08'
34	S. 89°54'42" W.	84.08'
35	S. 89°54'42" W.	84.08'
36	S. 89°54'42" W.	84.08'
37	S. 89°54'42" W.	84.08'
38	S. 89°54'42" W.	84.08'
39	S. 89°54'42" W.	84.08'
40	S. 89°54'42" W.	84.08'
41	S. 89°54'42" W.	84.08'
42	S. 89°54'42" W.	84.08'
43	S. 89°54'42" W.	84.08'
44	S. 89°54'42" W.	84.08'
45	S. 89°54'42" W.	84.08'
46	S. 89°54'42" W.	84.08'
47	S. 89°54'42" W.	84.08'
48	S. 89°54'42" W.	84.08'
49	S. 89°54'42" W.	84.08'
50	S. 89°54'42" W.	84.08'
51	S. 89°54'42" W.	84.08'
52	S. 89°54'42" W.	84.08'
53	S. 89°54'42" W.	84.08'
54	S. 89°54'42" W.	84.08'
55	S. 89°54'42" W.	84.08'
56	S. 89°54'42" W.	84.08'
57	S. 89°54'42" W.	84.08'
58	S. 89°54'42" W.	84.08'
59	S. 89°54'42" W.	84.08'
60	S. 89°54'42" W.	84.08'
61	S. 89°54'42" W.	84.08'
62	S. 89°54'42" W.	84.08'
63	S. 89°54'42" W.	84.08'
64	S. 89°54'42" W.	84.08'
65	S. 89°54'42" W.	84.08'
66	S. 89°54'42" W.	84.08'
67	S. 89°54'42" W.	84.08'
68	S. 89°54'42" W.	84.08'
69	S. 89°54'42" W.	84.08'
70	S. 89°54'42" W.	84.08'
71	S. 89°54'42" W.	84.08'
72	S. 89°54'42" W.	84.08'
73	S. 89°54'42" W.	84.08'
74	S. 89°54'42" W.	84.08'
75	S. 89°54'42" W.	84.08'
76	S. 89°54'42" W.	84.08'
77	S. 89°54'42" W.	84.08'
78	S. 89°54'42" W.	84.08'
79	S. 89°54'42" W.	84.08'
80	S. 89°54'42" W.	84.08'
81	S. 89°54'42" W.	84.08'
82	S. 89°54'42" W.	84.08'
83	S. 89°54'42" W.	84.08'
84	S. 89°54'42" W.	84.08'
85	S. 89°54'42" W.	84.08'
86	S. 89°54'42" W.	84.08'
87	S. 89°54'42" W.	84.08'
88	S. 89°54'42" W.	84.08'
89	S. 89°54'42" W.	84.08'
90	S. 89°54'42" W.	84.08'
91	S. 89°54'42" W.	84.08'
92	S. 89°54'42" W.	84.08'
93	S. 89°54'42" W.	84.08'
94	S. 89°54'42" W.	84.08'
95	S. 89°54'42" W.	84.08'
96	S. 89°54'42" W.	84.08'
97	S. 89°54'42" W.	84.08'
98	S. 89°54'42" W.	84.08'
99	S. 89°54'42" W.	84.08'
100	S. 89°54'42" W.	84.08'



Buildings and interior occupation not located or shown

NOT INCLUDED

NOT INCLUDED

CLIENT		PROJECT NAME		REVISIONS		George F. Young, Inc.		SHEET	
Essilor of America, Inc. 8300 Sheen Drive St. Petersburg, Florida 33709 (727) 549-4509		BOUNDARY SURVEY Essilor Park Street R & D		No. BY DESCRIPTION DATE		ARCHITECTURE • ENGINEERING • ENVIRONMENTAL LANDSCAPE ARCHITECTURE • PLANNING • SURVEYING ST. PETERSBURG • TAMPA • BRADENTON • GAINESVILLE SARASOTA • NORTH PALM BEACH RESPONSIBLE OFFICE: 1921 Tampa East Boulevard Tampa, FL 33619 Tel: (813) 221-1447 Fax: (813) 229-0557		Since 1919	
SECTION 1, TOWNSHIP 31 SOUTH, RANGE 15 EAST.		FIELD BOOK DATE: 11/14/07 BY: J. Young CHECKED: J. Young SCALE: 1" = 100'		JOB No. 071004600		LB. #021		2	