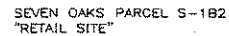




LEGEND

NOTE:
Heldt & Associates, Inc. makes no representations or guarantees
pertaining to easements, rights-of-way, set back lines, reserva-
tions, agreements and other similar matters.

SECTION 24-26-19
SECTION 19-26-20



DESCRIPTION: A parcel of land lying in Section 24, Township 26 South, Range 19 East, Pasco County, Florida, and being more particularly described as follows:

Commence at the Southeast corner of the Northeast 1/4 of said Section 24, run thence along the South boundary of said Northeast 1/4 of Section 24, S.89°56'45"N., 103.19 feet to a point on the Westerly right-of-way line of STATE ROAD No. 581, as recorded in Official Records Book 123, Page 852, of the Public Records of Pasco County, Florida; thence along said Westerly right-of-way line of STATE ROAD No. 581, S.89°56'45"N., 103.19 feet to a point of curve; thence Southwesterly, 169.27 feet along the arc of a curve to the right having a radius of 250.00 feet, to a point of tangency; thence Westerly, 10.00 feet to a point of tangency; thence Northwesterly, 88.92 feet along the arc of a curve to the right having a radius of 81.50 feet and a central angle of 62°30'51" (chord bearing N.58°15'25"W., 84.58 feet) to a point of reverse curvature; thence Northwesterly, 134.41 feet along the arc of a curve to the left having a radius of 146.50 feet and a central angle of 62°30'51" (chord bearing S.61°14'37"W., 147.74 feet) to a point of reverse curvature; thence Northwesterly, 87.49 feet along the arc of a curve to the right having a radius of 90.00 feet and a central angle of 62°02'09" (chord bearing N.78°32'57"W., 10.00 feet) to the POINT OF BEGINNING; thence continue Westerly, 86.46 feet along the arc of said curve to the right having the same radius of 281.50 feet and a central angle of 17°35'50" (chord bearing N.68°43'57"W., 86.12 feet) to a point of reverse curvature; thence Northwesterly, 87.69 feet along the arc of a curve to the left having a radius of 460.00 feet and a central angle of 33°31'33" (chord bearing S.61°14'37"W., 87.46 feet) to a point of reverse curvature; thence Northwesterly, 39.16 feet along the arc of a curve to the left having a radius of 25.00 feet and a central angle of 89°44'33" (chord bearing N.25°58'22"W., 35.28 feet) to a point of compound curvature; thence Northwesterly, 97.83 feet along the arc of a curve to the right having a radius of 220.00 feet and a central angle of 25°28'42" (chord bearing N.31°38'15"E., 97.03 feet) to a point of reverse curvature; thence Northwesterly, 122.57 feet along the arc of a curve to the left having a radius of 160.00 feet and a central angle of 33°31'33" (chord bearing S.61°14'37"W., 119.59 feet) to a point of tangency; thence Northwesterly, 10.00 feet along the arc of a curve to the left having a radius of 10.00 feet and a central angle of 0°00'00" (chord bearing EAST, 210.65 feet) to a point of tangency; thence Northwesterly, 143.24 feet to a point of curvature; thence Southwesterly, 35.18 feet along the arc of a curve to the right having a radius of 40.00 feet and a central angle of 50°23'29" (chord bearing S.25°40'54"W., 34.08 feet) to a point of tangency; thence S.50°52'38"W., 123.14 feet to a point of curvature; thence Southwesterly, 28.24 feet along the arc of a curve to the left having a radius of 40.00 feet and a central angle of 40°26'39" (chord bearing S.30°39'18"W., 27.85 feet) to a point of tangency; thence S.10°25'59"W., 35.93 feet to the POINT OF BEGINNING.

Containing 1,470 acres, more or less.

SEVEN OAKS PARCEL S-183
"RETAIL SITE"

DESCRIPTION: A parcel of land lying in Section 24, Township 25 South, Range 19 East, Pasco County, Florida, and being more particularly described as follows:

Commence at the Southeast corner of the Northeast 1/4 of said Section 24, run thence along the South boundary of said Northeast 1/4 of Section 24, S.89°56'45"W., 103.19 feet to a point on the Westerly right-of-way line of STATE ROAD No. 581, as recorded in Official Records Book 123, Page 852, of the Public Records of Pasco County, Florida; thence along said Westerly right-of-way line of STATE ROAD No. 581, North 09°09'E., to a point, to wit: the intersection of the arc of a curve to the right having a radius of 25.00 feet and a central angle of 90°00'00", (chord bearing S.45°29'09"W., 35.36 feet) to a point of tangency; thence N.89°30'31"W., 17.69 feet to a point of curvature; thence Northwesterly, 88.92 feet along the arc of a curve to the right having a radius of 81.50 feet and a central angle of 52°30'51" (chord bearing N.58°15'25"W., 84.58 feet) to a point of reverse curvature; thence Northwesterly, 100.00 feet along the arc of a curve to the right having a radius of 100.00 feet and a central angle of 52°30'41" (chord bearing N.53°17'01"W., 128.74 feet) to a point of reverse curvature; thence Westerly, 96.46 feet along the arc of a curve to the right having a radius of 281.50 feet and a central angle of 19°37'59" (chord bearing N.69°45'02"W., 95.99 feet) to a point of reverse curvature; thence Northwesterly, 87.59 feet along the arc of a curve to the left having a radius of 460.00 feet and a central angle of 19°37'59" (chord bearing N.69°45'02"W., 95.99 feet) to a point of reverse curvature; thence Northwesterly, 39.16 feet along the arc of a curve to the right having a radius of 20.00 feet and a central angle of 89°44'33" (chord bearing N.25°58'22"W., 35.28 feet) to a point of compound curvature; thence Northwesterly, 97.83 feet along the arc of a curve to the right having a radius of 220.00 feet and a central angle of 89°44'33" (chord bearing N.25°58'22"W., 35.28 feet) to a point of reverse curvature; thence Northwesterly, 22.57 feet along the arc of a curve to the left having a radius of 22.00 feet and a central angle of 43°53'27" (chord bearing N.22°25'53"E., 11.59 feet) to a point of tangency; thence N.00°29'09"E., 18.23 feet to the POINT OF BEGINNING; thence continue N.00°29'09"E., 238.08 feet; thence S.89°30'51"E., 210.64 feet; thence along a line lying 100.00 feet West of and parallel with to the aforesaid Westerly right-of-way line of STATE ROAD No. 581, S.00°29'09"W., 236.29 feet; thence WEST, 210.65 feet to the POINT OF BEGINNING.

Containing 1.147 acres, more or less.

This Survey Prepared For **SB ASSOCIATES LIMITED PARTNERSHIP**

<div style="text-align: center;">REVISIONS</div> <div> <div>Description</div> <div>Date</div> <div>Dwn</div> <div>Ch'd</div> <div>P.C.</div> <div>Order No.</div> </div>					<div style="text-align: center;">SURVEYOR'S CERTIFICATE</div> <p>This certifies that a survey of the hereon described property was made under my supervision and meets the Minimum Technical Standards set forth by the Florida Board of Professional Surveyors & Mappers in Chapter 6507-1, Florida Administrative Code, pursuant to Section 47.022, Florida Statutes.</p> <p style="text-align: center;"><i>Paul A. Dolomencoscolo</i></p> <p>Paul A. Dolomencoscolo</p> <p>FLORIDA PROFESSIONAL SURVEYOR & MAPPER No. 3881</p> <p>NOT VALID WITHOUT THE SIGNATURE AND THE ORIGINAL RAISED SEAL OF A FLORIDA LICENSED SURVEYOR AND MAPPER</p>		<div> <div>PREPARED BY:</div> <div>HENDT & ASSOCIATES, Inc.</div> <div>Tampa • Port Myers</div> <div>Certificate of Authorization</div> <div>Number LB 148</div> <div>CIVIL ENGINEERING</div> <div>Tampa Office</div> <div>2212 Beverly Avenue</div> <div>Tampa, Florida 33606</div> <div>Phone: 813-282-8011</div> <div>Mobile: 727-442-3830</div> <div>Fax: 813-282-2601</div> <div>FAX: 813-282-2478</div> </div> <div> <div> <div>PLANNING</div> <div>SURVEYING</div> <div>ENVIRONMENTAL PERMITTING</div> <div>LANDSCAPE ARCHITECTURE</div> </div> </div> <div> <div>Drawn: R.E.T.</div> <div>Checked: J.L.S./P.C.: J.H.</div> <div>Date: 11-18-04</div> <div>Dwg: 70ANS-5-182-85</div> <div>Order No.: CMK-58-514</div> </div> <div> <div>SECTION 24-26-19</div> </div>	
---------------------------------------------------------------------------------------------------------------------------------------------------------------------------------	--	--	--	--	----------------------------------------------------------------------------------------------------------------------------------------------------------------------------------------------------------------------------------------------------------------------------------------------------------------------------------------------------------------------------------------------------------------------------------------------------------------------------------------------------------------------------------------------------------------------------------------------------------------------------------------------------------------	--	-----------------------------------------------------------------------------------------------------------------------------------------------------------------------------------------------------------------------------------------------------------------------------------------------------------------------------------------------------------------------------------------------------------------------------------------------------------------------------------------------------------------------------------------------------------------------------------------------------------------------------------------------------------------------------------------------------------------------------------------------------------------------------------------	--