

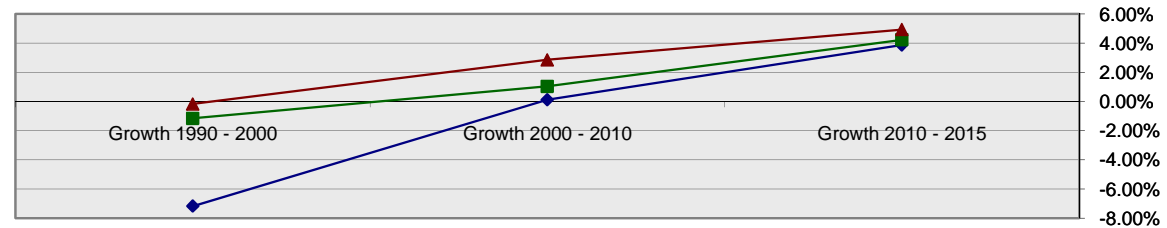
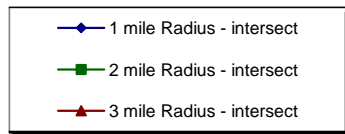
## Enhanced Demographic Snapshot

Description	1 mile Radius - intersection of U.S. Hwy 301 and Florence Ave., Thonotosassa	%	2 mile Radius - intersection of U.S. Hwy 301 and Florence Ave., Thonotosassa	%	3 mile Radius - intersection of U.S. Hwy 301 and Florence Ave., Thonotosassa	%
-------------	---	---	---	---	---	---



### Population Overview

#### Population Growth



2015 Projection	3,507		6,000		9,518	
2010 Estimate	3,376		5,756		9,070	
2000 Census	3,372		5,697		8,818	
1990 Census	3,633		5,764		8,833	
Growth 2010 - 2015		3.88%		4.24%		4.94%
Growth 2000 - 2010		0.12%		1.04%		2.86%
Growth 1990 - 2000		-7.18%		-1.16%		-0.17%

## Enhanced Demographic Snapshot

Description	1 mile Radius - intersection of U.S. Hwy 301 and Florence Ave., Thonotosassa	%	2 mile Radius - intersection of U.S. Hwy 301 and Florence Ave., Thonotosassa	%	3 mile Radius - intersection of U.S. Hwy 301 and Florence Ave., Thonotosassa	%
-------------	---	---	---	---	---	---

### 2010 Estimate

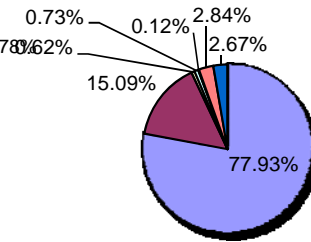
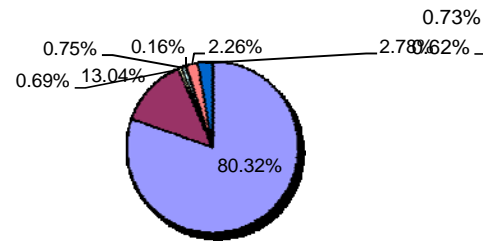
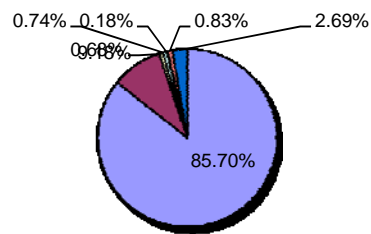
#### Population by Single Race Classification

3,377

5,757

9,070

- White Alone
- Black or African American Alone
- American Indian and Alaska Native Alone
- Asian Alone
- Native Hawaiian and Other Pacific Islander Alone
- Some Other Race Alone
- Two or More Races



White Alone	2,894	85.70%	4,624	80.32%	7,068	77.93%
Black or African American Alone	310	9.18%	751	13.04%	1,369	15.09%
American Indian and Alaska Native Alone	23	0.68%	40	0.69%	56	0.62%
Asian Alone	25	0.74%	43	0.75%	66	0.73%
Native Hawaiian and Other Pacific Islander Alone	6	0.18%	9	0.16%	11	0.12%
Some Other Race Alone	28	0.83%	130	2.26%	258	2.84%
Two or More Races	91	2.69%	160	2.78%	242	2.67%

#### Population Hispanic or Latino by Origin

3,375

5,756

9,070

Not Hispanic or Latino	3,161	93.66%	5,315	92.34%	8,257	91.04%
Hispanic or Latino:	214	6.34%	441	7.66%	813	8.96%
Mexican	46	21.50%	92	20.86%	178	21.89%
Puerto Rican	73	34.11%	175	39.68%	347	42.68%
Cuban	34	15.89%	54	12.24%	78	9.59%
All Other Hispanic or Latino	61	28.50%	120	27.21%	210	25.83%

## Enhanced Demographic Snapshot

Description	1 mile Radius - intersection of U.S. Hwy 301 and Florence Ave., Thonotosassa		%	2 mile Radius - intersection of U.S. Hwy 301 and Florence Ave., Thonotosassa		%	3 mile Radius - intersection of U.S. Hwy 301 and Florence Ave., Thonotosassa		%
<b>Hispanic or Latino by Single Race Classification</b>	214			441			812		
White Alone	152	71.03%		257	58.28%		470	57.88%	
Black or African American Alone	9	4.21%		17	3.85%		37	4.56%	
American Indian and Alaska Native Alone	5	2.34%		5	1.13%		5	0.62%	
Asian Alone	12	5.61%		19	4.31%		24	2.96%	
Native Hawaiian and Other Pacific Islander Alone	0	0.00%		0	0.00%		0	0.00%	
Some Other Race Alone	19	8.88%		111	25.17%		224	27.59%	
Two or More Races	17	7.94%		32	7.26%		52	6.40%	
<b>Population Asian Alone Race by Category</b>	23			43			67		
Chinese, Except Taiwanese	0	0.00%		1	2.33%		3	4.48%	
Filipino	6	26.09%		11	25.58%		16	23.88%	
Japanese	3	13.04%		4	9.30%		5	7.46%	
Asian Indian	2	8.70%		6	13.95%		10	14.93%	
Korean	1	4.35%		4	9.30%		6	8.96%	
Vietnamese	11	47.83%		17	39.53%		25	37.31%	
Cambodian	0	0.00%		0	0.00%		0	0.00%	
Hmong	0	0.00%		0	0.00%		0	0.00%	
Laotian	0	0.00%		0	0.00%		0	0.00%	
Thai	0	0.00%		0	0.00%		1	1.49%	
All otherAsian Races Including 2+ Category	0	0.00%		0	0.00%		1	1.49%	

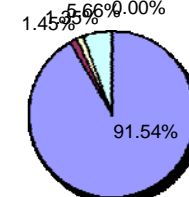
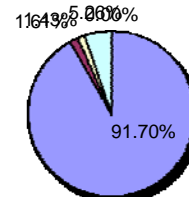
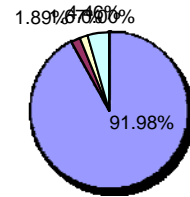
## Enhanced Demographic Snapshot

Description	1 mile Radius - intersection of U.S. Hwy 301 and Florence Ave., Thonotosassa	%	2 mile Radius - intersection of U.S. Hwy 301 and Florence Ave., Thonotosassa	%	3 mile Radius - intersection of U.S. Hwy 301 and Florence Ave., Thonotosassa	%
<b>Population by Ancestry</b>	3,376		5,756		9,070	
Arab	1	0.03%	1	0.02%	1	0.01%
Czech	4	0.12%	6	0.10%	7	0.08%
Danish	1	0.03%	1	0.02%	1	0.01%
Dutch	25	0.74%	55	0.96%	103	1.14%
English	324	9.60%	506	8.79%	750	8.27%
French (except Basque)	83	2.46%	143	2.48%	231	2.55%
French Canadian	22	0.65%	31	0.54%	47	0.52%
German	400	11.85%	652	11.33%	989	10.90%
Greek	18	0.53%	30	0.52%	40	0.44%
Hungarian	8	0.24%	14	0.24%	20	0.22%
Irish	309	9.15%	471	8.18%	658	7.25%
Italian	100	2.96%	204	3.54%	372	4.10%
Lithuanian	0	0.00%	7	0.12%	19	0.21%
United States or American	385	11.40%	654	11.36%	1,049	11.57%
Norwegian	3	0.09%	3	0.05%	3	0.03%
Polish	39	1.16%	66	1.15%	102	1.12%
Portuguese	0	0.00%	7	0.12%	20	0.22%
Russian	1	0.03%	5	0.09%	14	0.15%
Scottish	75	2.22%	114	1.98%	142	1.57%
Scotch-Irish	28	0.83%	68	1.18%	135	1.49%
Slovak	0	0.00%	0	0.00%	0	0.00%
Subsaharan African	1	0.03%	6	0.10%	16	0.18%
Swedish	24	0.71%	29	0.50%	32	0.35%
Swiss	5	0.15%	9	0.16%	13	0.14%
Ukrainian	12	0.36%	15	0.26%	16	0.18%
Welsh	24	0.71%	40	0.69%	56	0.62%
West Indian (exc. Hisp. Groups)	7	0.21%	11	0.19%	16	0.18%
Other Ancestries	996	29.50%	1,802	31.31%	2,954	32.57%
Ancestry Unclassified	481	14.25%	806	14.00%	1,264	13.94%

## Enhanced Demographic Snapshot

Description	1 mile Radius - intersection of U.S. Hwy 301 and Florence Ave., Thonotosassa	%	2 mile Radius - intersection of U.S. Hwy 301 and Florence Ave., Thonotosassa	%	3 mile Radius - intersection of U.S. Hwy 301 and Florence Ave., Thonotosassa	%
<b>Population Age 5+ by Language Spoken at Home</b>	3,117		5,326		8,393	

- Speak Only English at Home
- Speak Asian/Pacific Islander Language at Home
- Speak IndoEuropean Language at Home
- Speak Spanish at Home
- Speak Other Language at Home



Speak Only English at Home	2,867	91.98%	4,884	91.70%	7,683	91.54%
Speak Asian/Pacific Islander Language at Home	59	1.89%	86	1.61%	122	1.45%
Speak IndoEuropean Language at Home	52	1.67%	76	1.43%	113	1.35%
Speak Spanish at Home	139	4.46%	280	5.26%	475	5.66%
Speak Other Language at Home	0	0.00%	0	0.00%	0	0.00%

<b>Population by Sex</b>	3,375		5,756		9,070	
Male	1,681	49.81%	2,884	50.10%	4,570	50.39%
Female	1,694	50.19%	2,872	49.90%	4,500	49.61%

## Enhanced Demographic Snapshot

Description	1 mile Radius - intersection of U.S. Hwy 301 and Florence Ave., Thonotosassa	%	2 mile Radius - intersection of U.S. Hwy 301 and Florence Ave., Thonotosassa	%	3 mile Radius - intersection of U.S. Hwy 301 and Florence Ave., Thonotosassa	%
<b>Population by Age</b>	3,375		5,756		9,070	
Age 0 - 4	258	7.64%	430	7.47%	677	7.46%
Age 5 - 9	240	7.11%	404	7.02%	639	7.05%
Age 10 - 14	227	6.73%	388	6.74%	630	6.95%
Age 15 - 17	147	4.36%	241	4.19%	382	4.21%
Age 18 - 20	162	4.80%	259	4.50%	390	4.30%
Age 21 - 24	167	4.95%	279	4.85%	441	4.86%
Age 25 - 34	417	12.36%	728	12.65%	1,159	12.78%
Age 35 - 44	442	13.10%	753	13.08%	1,205	13.29%
Age 45 - 54	490	14.52%	836	14.52%	1,322	14.58%
Age 55 - 64	394	11.67%	712	12.37%	1,118	12.33%
Age 65 - 74	246	7.29%	422	7.33%	655	7.22%
Age 75 - 84	134	3.97%	218	3.79%	323	3.56%
Age 85 and over	51	1.51%	86	1.49%	129	1.42%
Age 16 and over	2,597	76.95%	4,450	77.31%	6,997	77.14%
Age 18 and over	2,503	74.16%	4,293	74.58%	6,742	74.33%
Age 21 and over	2,341	69.36%	4,034	70.08%	6,352	70.03%
Age 65 and over	430	12.74%	726	12.61%	1,107	12.21%
Median Age	36.60		37.00		36.80	
Average Age	37.10		37.40		37.20	

## Enhanced Demographic Snapshot

Description	1 mile Radius - intersection of U.S. Hwy 301 and Florence Ave., Thonotosassa	%	2 mile Radius - intersection of U.S. Hwy 301 and Florence Ave., Thonotosassa	%	3 mile Radius - intersection of U.S. Hwy 301 and Florence Ave., Thonotosassa	%
<b>Male Population by Age</b>	1,682		2,884		4,570	
Age 0 - 4	133	7.91%	221	7.66%	347	7.59%
Age 5 - 9	124	7.37%	208	7.21%	331	7.24%
Age 10 - 14	116	6.90%	204	7.07%	335	7.33%
Age 15 - 17	76	4.52%	125	4.33%	191	4.18%
Age 18 - 20	82	4.88%	137	4.75%	209	4.57%
Age 21 - 24	87	5.17%	151	5.24%	235	5.14%
Age 25 - 34	208	12.37%	367	12.73%	586	12.82%
Age 35 - 44	232	13.79%	393	13.63%	623	13.63%
Age 45 - 54	244	14.51%	416	14.42%	661	14.46%
Age 55 - 64	186	11.06%	334	11.58%	538	11.77%
Age 65 - 74	117	6.96%	204	7.07%	324	7.09%
Age 75 - 84	58	3.45%	93	3.22%	142	3.11%
Age 85 and over	19	1.13%	31	1.07%	48	1.05%
Median Age	35.60		35.70		35.80	
Average Age	36.10		36.30		36.30	

## Enhanced Demographic Snapshot

Description	1 mile Radius - intersection of U.S. Hwy 301 and Florence Ave., Thonotosassa	%	2 mile Radius - intersection of U.S. Hwy 301 and Florence Ave., Thonotosassa	%	3 mile Radius - intersection of U.S. Hwy 301 and Florence Ave., Thonotosassa	%
<b>Female Population by Age</b>	1,693		2,871		4,501	
Age 0 - 4	126	7.44%	209	7.28%	329	7.31%
Age 5 - 9	116	6.85%	195	6.79%	309	6.87%
Age 10 - 14	110	6.50%	184	6.41%	295	6.55%
Age 15 - 17	70	4.13%	116	4.04%	191	4.24%
Age 18 - 20	81	4.78%	122	4.25%	182	4.04%
Age 21 - 24	79	4.67%	129	4.49%	205	4.55%
Age 25 - 34	210	12.40%	361	12.57%	573	12.73%
Age 35 - 44	210	12.40%	360	12.54%	582	12.93%
Age 45 - 54	247	14.59%	420	14.63%	661	14.69%
Age 55 - 64	208	12.29%	378	13.17%	580	12.89%
Age 65 - 74	128	7.56%	217	7.56%	331	7.35%
Age 75 - 84	76	4.49%	125	4.35%	182	4.04%
Age 85 and over	32	1.89%	55	1.92%	81	1.80%
Median Age	37.60		38.30		37.90	
Average Age	38.00		38.40		38.00	
<b>Population Age 15+ by Marital Status</b>	2,650		4,534		7,123	
Total, Never Married	727	27.43%	1,314	28.98%	2,108	29.59%
Males, Never Married	426	16.08%	755	16.65%	1,188	16.68%
Females, Never Married	301	11.36%	559	12.33%	921	12.93%
Married, Spouse Present	1,118	42.19%	1,891	41.71%	2,955	41.49%
Married, Spouse Absent	158	5.96%	242	5.34%	415	5.83%
Widowed	138	5.21%	257	5.67%	407	5.71%
Males Widowed	5	0.19%	29	0.64%	64	0.90%
Females Widowed	133	5.02%	228	5.03%	343	4.82%
Divorced	509	19.21%	830	18.31%	1,238	17.38%
Males Divorced	255	9.62%	409	9.02%	609	8.55%
Females Divorced	254	9.58%	422	9.31%	629	8.83%



## Enhanced Demographic Snapshot

Description	1 mile Radius - intersection of U.S. Hwy 301 and Florence Ave., Thonotosassa	%	2 mile Radius - intersection of U.S. Hwy 301 and Florence Ave., Thonotosassa	%	3 mile Radius - intersection of U.S. Hwy 301 and Florence Ave., Thonotosassa	%
-------------	---	---	---	---	---	---



### Education

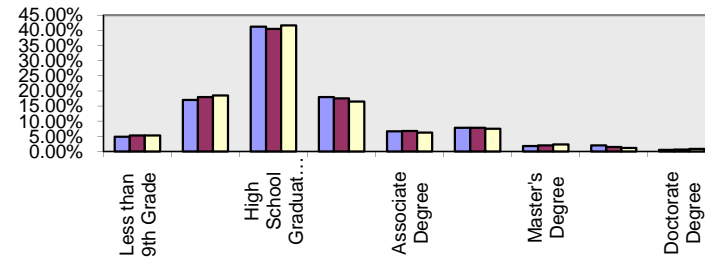
#### Population Age 25+ by Educational Attainment

2,175

3,754

5,910

- 1 mile Radius - intersect
- 2 mile Radius - intersect
- 3 mile Radius - intersect



Less than 9th Grade	106	4.87%	199	5.30%	314	5.31%
Some High School, no diploma	371	17.06%	675	17.98%	1,092	18.48%
High School Graduate (or GED)	896	41.20%	1,518	40.44%	2,461	41.64%
Some College, no degree	391	17.98%	657	17.50%	972	16.45%
Associate Degree	146	6.71%	254	6.77%	372	6.29%
Bachelor's Degree	171	7.86%	292	7.78%	443	7.50%
Master's Degree	40	1.84%	77	2.05%	135	2.28%
Professional School Degree	43	1.98%	57	1.52%	71	1.20%
Doctorate Degree	11	0.51%	25	0.67%	50	0.85%

#### Population Age 25+ by Educational Attainment, Hisp or Lat

117

244

444

Less than 9th Grade	15	12.82%	33	13.52%	68	15.32%
Some High School, no diploma	16	13.68%	63	25.82%	114	25.68%
High School Graduate (or GED)	21	17.95%	55	22.54%	100	22.52%
Some College, no degree	6	5.13%	8	3.28%	27	6.08%
Associate Degree	24	20.51%	41	16.80%	71	15.99%

## Enhanced Demographic Snapshot

Description	1 mile Radius - intersection of U.S. Hwy 301 and Florence Ave., Thonotosassa		2 mile Radius - intersection of U.S. Hwy 301 and Florence Ave., Thonotosassa		3 mile Radius - intersection of U.S. Hwy 301 and Florence Ave., Thonotosassa	
		%		%		%
Bachelor's Degree	32	27.35%	40	16.39%	53	11.94%
Master's Degree	3	2.56%	4	1.64%	11	2.48%

## Enhanced Demographic Snapshot

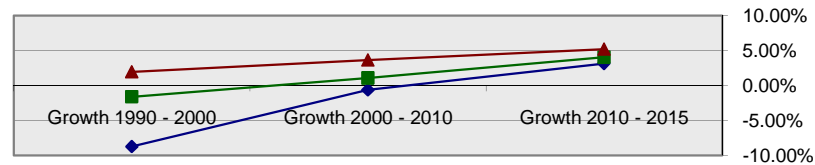
Description	1 mile Radius - intersection of U.S. Hwy 301 and Florence Ave., Thonotosassa	%	2 mile Radius - intersection of U.S. Hwy 301 and Florence Ave., Thonotosassa	%	3 mile Radius - intersection of U.S. Hwy 301 and Florence Ave., Thonotosassa	%
-------------	---	---	---	---	---	---



### Household Overview

- ◆ 1 mile Radius - intersect
- 2 mile Radius - intersect
- ▲ 3 mile Radius - intersect

### Household Growth



2015 Projection	1,308		2,261		3,619	
2010 Estimate	1,268		2,173		3,440	
2000 Census	1,276		2,150		3,319	
1990 Census	1,398		2,185		3,255	
Growth 2010 - 2015		3.15%		4.05%		5.20%
Growth 2000 - 2010		-0.63%		1.07%		3.65%
Growth 1990 - 2000		-8.73%		-1.60%		1.97%

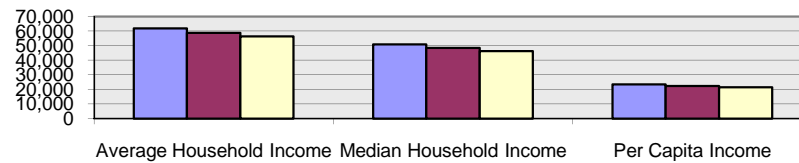
### 2010 Estimate

<b>Households by Household Type</b>	1,268		2,173		3,440	
Family Households	872	68.77%	1,505	69.26%	2,366	68.78%
Non Family Households	396	31.23%	668	30.74%	1,074	31.22%
<b>Households by Ethnicity, Hispanic/Latino</b>	65	5.13%	132	6.07%	237	6.89%
<b>Group Quarters Population</b>	21		32		68	

## Enhanced Demographic Snapshot

Description	1 mile Radius - intersection of U.S. Hwy 301 and Florence Ave., Thonotosassa	%	2 mile Radius - intersection of U.S. Hwy 301 and Florence Ave., Thonotosassa	%	3 mile Radius - intersection of U.S. Hwy 301 and Florence Ave., Thonotosassa	%
<b>Households by Household Income</b>	1,267		2,173		3,440	

■ 1 mile Radius - intersect  
■ 2 mile Radius - intersect  
■ 3 mile Radius - intersect



Income Less than \$15,000	134	10.58%	263	12.10%	479	13.92%
Income \$15,000 - \$24,999	131	10.34%	249	11.46%	411	11.95%
Income \$25,000 - \$34,999	162	12.79%	267	12.29%	445	12.94%
Income \$35,000 - \$49,999	197	15.55%	343	15.78%	510	14.83%
Income \$50,000 - \$74,999	270	21.31%	480	22.09%	756	21.98%
Income \$75,000 - \$99,999	187	14.76%	303	13.94%	462	13.43%
Income \$100,000 - \$124,999	79	6.24%	113	5.20%	163	4.74%
Income \$125,000 - \$149,999	42	3.31%	59	2.72%	80	2.33%
Income \$150,000 - \$199,999	54	4.26%	72	3.31%	96	2.79%
Income \$200,000 - \$499,999	8	0.63%	20	0.92%	32	0.93%
Income \$500,000 or more	3	0.24%	4	0.18%	6	0.17%
<b>Average Household Income</b>	61,740		58,744		56,312	
<b>Median Household Income</b>	50,880		48,448		46,324	
<b>Per Capita Income</b>	\$23,336		\$22,291		\$21,482	

## Enhanced Demographic Snapshot

Description	1 mile Radius - intersection of U.S. Hwy 301 and Florence Ave., Thonotosassa	%	2 mile Radius - intersection of U.S. Hwy 301 and Florence Ave., Thonotosassa	%	3 mile Radius - intersection of U.S. Hwy 301 and Florence Ave., Thonotosassa	%
<b>Median Household Income by Single Race Classification or Ethnicity</b>						
White Alone	51,733		49,277		47,284	
Black or African American Alone	46,739		47,260		42,917	
American Indian and Alaska Native Alone	70,833		71,875		68,750	
Asian Alone	25,000		26,667		30,000	
Native Hawaiian and Other Pacific Islander Alone	38,750		38,750		38,750	
Some Other Race Alone	50,000		26,500		27,857	
Two or More Races	54,167		48,750		48,269	
Hispanic or Latino	41,818		36,339		32,000	
Not Hispanic or Latino	52,075		49,524		47,484	
<b>Household Type, Presence Own Children</b>						
	874		1,505		2,367	
Married-Couple Family, own children	216	24.71%	379	25.18%	592	25.01%
Married-Couple Family, no own children	361	41.30%	614	40.80%	932	39.37%
Male Householder, own children	68	7.78%	106	7.04%	169	7.14%
Male Householder, no own children	41	4.69%	71	4.72%	106	4.48%
Female Householder, own children	106	12.13%	187	12.43%	330	13.94%
Female Householder, no own children	82	9.38%	148	9.83%	238	10.05%

## Enhanced Demographic Snapshot

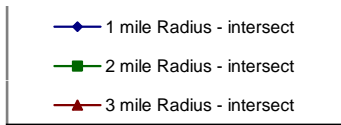
Description	1 mile Radius - intersection of U.S. Hwy 301 and Florence Ave., Thonotosassa	%	2 mile Radius - intersection of U.S. Hwy 301 and Florence Ave., Thonotosassa	%	3 mile Radius - intersection of U.S. Hwy 301 and Florence Ave., Thonotosassa	%
<b>Household by Household Size</b>	1,267		2,174		3,440	
1-person household	294	23.20%	500	23.00%	806	23.43%
2-person household	441	34.81%	747	34.36%	1,156	33.60%
3-person household	210	16.57%	388	17.85%	639	18.58%
4-person household	174	13.73%	304	13.98%	489	14.22%
5-person household	89	7.02%	141	6.49%	211	6.13%
6-person household	40	3.16%	61	2.81%	88	2.56%
7 or more person household	19	1.50%	33	1.52%	51	1.48%
Average Household Size	2.65		2.63		2.62	
<b>Households by Presence of People</b>	1,265		2,173		3,440	
Households with 1 or more People under Age 18	445	35.18%	772	35.53%	1,255	36.48%
Married-Couple Family	234	18.50%	412	18.96%	648	18.84%
Other Family, Male Householder	68	5.38%	111	5.11%	178	5.17%
Other Family, Female Householder	133	10.51%	232	10.68%	400	11.63%
Non Family, Male Householder	10	0.79%	16	0.74%	27	0.78%
Non Family, Female Householder	0	0.00%	1	0.05%	2	0.06%
Households no People under Age 18	820	64.82%	1,401	64.47%	2,185	63.52%
Married-Couple Family	333	26.32%	565	26.00%	853	24.80%
Other Family, Male Householder	37	2.92%	63	2.90%	91	2.65%
Other Family, Female Householder	53	4.19%	101	4.65%	162	4.71%
Non Family, Male Householder	199	15.73%	343	15.78%	592	17.21%
Non Family, Female Householder	198	15.65%	329	15.14%	487	14.16%

## Enhanced Demographic Snapshot

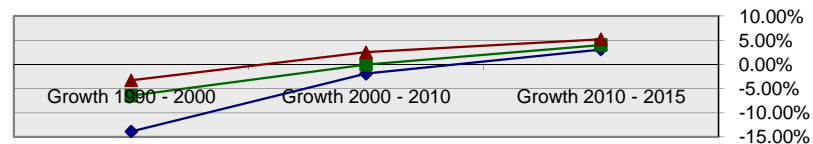
Description	1 mile Radius - intersection of U.S. Hwy 301 and Florence Ave., Thonotosassa	%	2 mile Radius - intersection of U.S. Hwy 301 and Florence Ave., Thonotosassa	%	3 mile Radius - intersection of U.S. Hwy 301 and Florence Ave., Thonotosassa	%
<b>Households by Number of Vehicles</b>						
	1,268		2,174		3,440	
No Vehicles	70	5.52%	104	4.78%	160	4.65%
1 Vehicles	451	35.57%	782	35.97%	1,296	37.67%
2 Vehicles	498	39.27%	834	38.36%	1,277	37.12%
3 Vehicles	149	11.75%	279	12.83%	469	13.63%
4 Vehicles	78	6.15%	143	6.58%	195	5.67%
5 or more Vehicles	22	1.74%	32	1.47%	43	1.25%
Average Number of Vehicles	2		2		2	



### Family Household Overview



### Family Household Growth



2015 Projection	899		1,565		2,489	
2010 Estimate	872		1,505		2,366	
2000 Census	889		1,506		2,308	
1990 Census	1,032		1,610		2,386	
Growth 2010 - 2015		3.10%		3.99%		5.20%
Growth 2000 - 2010		-1.91%		-0.07%		2.51%
Growth 1990 - 2000		-13.86%		-6.46%		-3.27%

## Enhanced Demographic Snapshot

Description	1 mile Radius - intersection of U.S. Hwy 301 and Florence Ave., Thonotosassa	%	2 mile Radius - intersection of U.S. Hwy 301 and Florence Ave., Thonotosassa	%	3 mile Radius - intersection of U.S. Hwy 301 and Florence Ave., Thonotosassa	%
-------------	---	---	---	---	---	---

### 2010 Estimate

<b>Families by Poverty Status</b>	872		1,505		2,366	
Families At or Above Poverty	734	84.17%	1,301	86.45%	2,074	87.66%
Families At or Above Poverty with Children	289	33.14%	587	39.00%	984	41.59%
Families At or Below Poverty	138	15.83%	204	13.55%	292	12.34%
Families At or Below Poverty with Children	116	13.30%	175	11.63%	255	10.78%



### Employment

<b>Population Age 16+ by Employment Status</b>	2,596		4,450		6,997	
In Armed Forces	0	0.00%	0	0.00%	0	0.00%
Civilian - Employed	1,536	59.17%	2,708	60.85%	4,239	60.58%
Civilian - Unemployed	97	3.74%	161	3.62%	283	4.04%
Not in Labor Force	963	37.10%	1,581	35.53%	2,475	35.37%

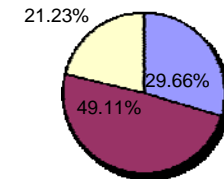
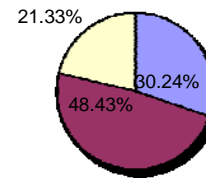
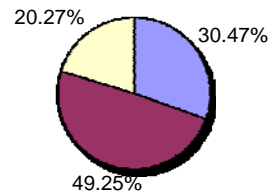
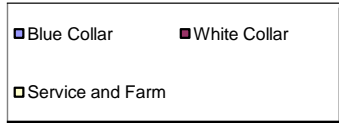


## Enhanced Demographic Snapshot

Description	1 mile Radius - intersection of U.S. Hwy 301 and Florence Ave., Thonotosassa		2 mile Radius - intersection of U.S. Hwy 301 and Florence Ave., Thonotosassa		3 mile Radius - intersection of U.S. Hwy 301 and Florence Ave., Thonotosassa	
		%		%		%
<b>Civilian Employed Population 16+ Class of Worker</b>	1,539		2,703		4,235	
For-Profit Private Workers	1,213	78.82%	2,101	77.73%	3,214	75.89%
Non-Profit Private Workers	64	4.16%	114	4.22%	217	5.12%
Local Government Workers	145	9.42%	264	9.77%	395	9.33%
State Government Workers	6	0.39%	33	1.22%	78	1.84%
Federal Government Workers	35	2.27%	57	2.11%	74	1.75%
Self-Emp Workers	73	4.74%	130	4.81%	250	5.90%
Unpaid Family Workers	3	0.19%	4	0.15%	7	0.17%
<b>Civilian Employed Population 16+ by Occupation</b>	1,538		2,703		4,234	
Architecture and Engineering	11	0.72%	19	0.70%	27	0.64%
Arts, Entertainment and Sports	12	0.78%	23	0.85%	40	0.94%
Building and Grounds Maintenance	64	4.16%	151	5.59%	279	6.59%
Business, and Financial Operations	37	2.41%	72	2.66%	125	2.95%
Community and Social Services	7	0.46%	16	0.59%	28	0.66%
Computers and Mathematics	27	1.76%	40	1.48%	49	1.16%
Construction and Extraction	172	11.18%	279	10.32%	390	9.21%
Education, Training and Libraries	63	4.10%	98	3.63%	158	3.73%
Farming, Fishing, and Forestry	1	0.07%	2	0.07%	30	0.71%
Food Preparation and Serving	128	8.32%	208	7.70%	250	5.90%
Healthcare Practitioners and Technicians	42	2.73%	76	2.81%	158	3.73%
Healthcare Support	36	2.34%	57	2.11%	79	1.87%
Maintenance and Repair	71	4.62%	117	4.33%	219	5.17%
Legal Services	16	1.04%	25	0.92%	30	0.71%
Life, physical and Social Sciences	19	1.24%	32	1.18%	40	0.94%
Management	114	7.41%	211	7.81%	330	7.79%
Office and Administrative Support	216	14.04%	391	14.47%	627	14.81%
Production	88	5.72%	183	6.77%	291	6.87%
Protective Services	45	2.93%	104	3.85%	186	4.39%
Sales and Related Services	193	12.55%	306	11.32%	468	11.05%
Personal Care Services	38	2.47%	54	2.00%	74	1.75%
Transportation and Moving	138	8.97%	239	8.84%	356	8.41%

## Enhanced Demographic Snapshot

Description	1 mile Radius - intersection of U.S. Hwy 301 and Florence Ave., Thonotosassa	%	2 mile Radius - intersection of U.S. Hwy 301 and Florence Ave., Thonotosassa	%	3 mile Radius - intersection of U.S. Hwy 301 and Florence Ave., Thonotosassa	%
<b>Population 16+ by Occupation Classification</b>	1,539		2,705		4,235	



Blue Collar	469	30.47%	818	30.24%	1,256	29.66%
White Collar	758	49.25%	1,310	48.43%	2,080	49.11%
Service and Farm	312	20.27%	577	21.33%	899	21.23%

<b>Workers Age 16+ by Transportation to Work</b>	1,519		2,669		4,166	
Drove Alone	1,072	70.57%	1,968	73.74%	3,168	76.04%
Carpooled	228	15.01%	341	12.78%	500	12.00%
Public Transportation	17	1.12%	21	0.79%	35	0.84%
Walked	44	2.90%	68	2.55%	84	2.02%
Bicycle	18	1.18%	25	0.94%	26	0.62%
Other Means	28	1.84%	52	1.95%	70	1.68%
Worked at Home	112	7.37%	194	7.27%	283	6.79%

<b>Workers Age 16+ by Travel Time to Work</b>	1,456		2,553		3,998	
Less than 15 Minutes	261	17.93%	528	20.68%	826	20.66%
15 - 29 Minutes	645	44.30%	1,090	42.69%	1,699	42.50%
30 - 44 Minutes	330	22.66%	557	21.82%	887	22.19%
45 - 59 Minutes	145	9.96%	240	9.40%	338	8.45%
60 or more Minutes	75	5.15%	138	5.41%	248	6.20%
Average Travel Time to Work in Minutes	28		28		28	

## Enhanced Demographic Snapshot

Description	1 mile Radius - intersection of U.S. Hwy 301 and Florence Ave., Thonotosassa	%	2 mile Radius - intersection of U.S. Hwy 301 and Florence Ave., Thonotosassa	%	3 mile Radius - intersection of U.S. Hwy 301 and Florence Ave., Thonotosassa	%
-------------	---	---	---	---	---	---



### Housing

<b>Tenure of Occupied Housing Units</b>	1,267		2,173		3,440	
Owner Occupied	926	73.09%	1,603	73.77%	2,351	68.34%
Renter Occupied	341	26.91%	570	26.23%	1,089	31.66%
 Current Year Owner Occ. Housing Units: Average Length of Residence	 17		 17		 16	
 Current Year Renter Occ. Housing Units: Average Length of Residence	 6		 6		 6	

<b>All Owner-Occupied Housing Values</b>	926		1,603		2,352	
Value Less than \$20,000	147	15.87%	206	12.85%	260	11.05%
Value \$20,000 - \$39,999	92	9.94%	134	8.36%	161	6.85%
Value \$40,000 - \$59,999	89	9.61%	166	10.36%	229	9.74%
Value \$60,000 - \$79,999	65	7.02%	126	7.86%	179	7.61%
Value \$80,000 - \$99,999	84	9.07%	154	9.61%	238	10.12%
Value \$100,000 - \$149,999	232	25.05%	414	25.83%	639	27.17%
Value \$150,000 - \$199,999	82	8.86%	139	8.67%	216	9.18%
Value \$200,000 - \$299,999	100	10.80%	183	11.42%	280	11.90%
Value \$300,000 - \$399,999	10	1.08%	35	2.18%	79	3.36%
Value \$400,000 - \$499,999	0	0.00%	9	0.56%	25	1.06%
Value \$500,000 - \$749,999	23	2.48%	34	2.12%	43	1.83%
Value \$750,000 - \$999,999	2	0.22%	3	0.19%	3	0.13%
Value \$1,000,000 or more	0	0.00%	0	0.00%	0	0.00%
 Median All Owner-Occupied Housing Value	 96,667		 101,872		 108,529	

## Enhanced Demographic Snapshot

Description	1 mile Radius - intersection of U.S. Hwy 301 and Florence Ave., Thonotosassa	%	2 mile Radius - intersection of U.S. Hwy 301 and Florence Ave., Thonotosassa	%	3 mile Radius - intersection of U.S. Hwy 301 and Florence Ave., Thonotosassa	%
<b>Housing Units by Units in Structure</b>	1,537		2,568		3,986	
1 Unit Attached	14	0.91%	79	3.08%	167	4.19%
1 Unit Detached	504	32.79%	908	35.36%	1,533	38.46%
2 Units	20	1.30%	35	1.36%	244	6.12%
3 or 4 Units	0	0.00%	97	6.31%	160	10.41%
5 to 19 Units	11	0.72%	15	0.58%	33	0.83%
20 to 49 Units	1	0.07%	1	0.04%	13	0.33%
50 or more Units	0	0.00%	0	0.00%	0	0.00%
Mobile Home or Trailer	987	64.22%	1,431	55.72%	1,831	45.94%
Boat, RV, Van, etc.	0	0.00%	2	0.08%	5	0.13%
<b>Housing Units by Year Structure Built</b>	1,537		2,567		3,986	
Housing Unit Built 2000 or Later	33	2.15%	94	3.66%	200	5.02%
Housing Unit Built 1990 to 1999	311	20.23%	522	20.34%	706	17.71%
Housing Unit Built 1980 to 1989	427	27.78%	737	28.71%	1,123	28.17%
Housing Unit Built 1970 to 1979	518	33.70%	782	30.46%	1,241	31.13%
Housing Unit Built 1960 to 1969	185	12.04%	303	11.80%	478	11.99%
Housing Unit Built 1950 to 1959	50	3.25%	91	3.54%	154	3.86%
Housing Unit Built 1940 to 1949	0	0.00%	18	0.70%	50	1.25%
Housing Unit Built 1939 or earlier	13	0.85%	20	0.78%	34	0.85%
Median Year Housing Structure Built	1980		1981		1980	



Copyright © 2010 The Nielsen Company. All Rights Reserved.

Nielsen PrimeLocation®