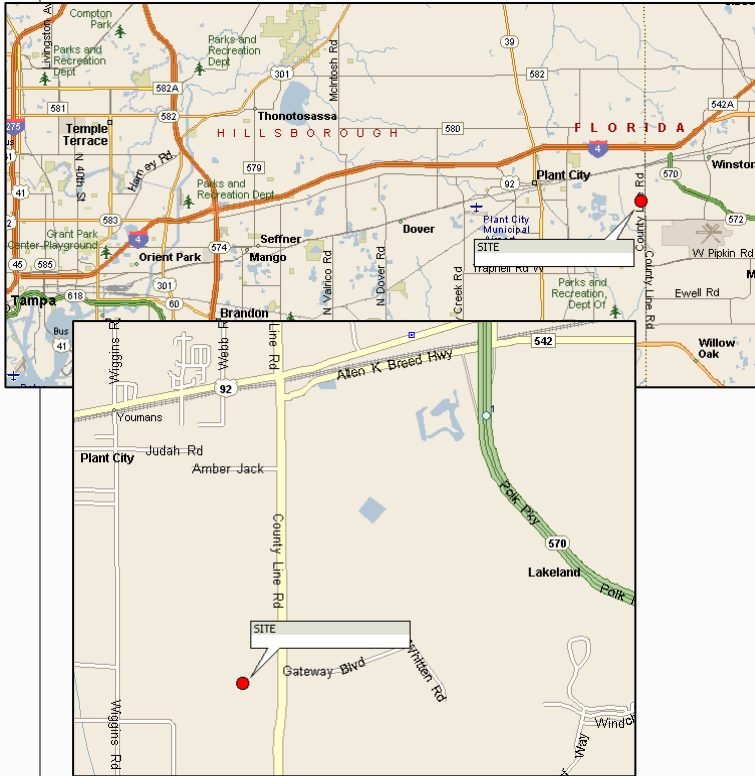


**LAND
FOR SALE**

**70 Acres, Multifamily
61.85 Acres, Single Family
14 Acres, Retail**

Plant City, Hillsborough County, Florida



LOCATION: SWQ U.S. Highway 92 and County Line Road (I-4 exit), approximately 7/10 of a mile south of I-4.

SIZE:

Multifamily - 70 Ac. Gross, 33.4 Ac. Net

Single Family - 61.85 Ac. Gross, 43.5 Ac. Net

Retail – 14.51 Ac. Gross, 13.58 Ac. Net

PRICE:

Multifamily - \$8,000/unit

Single Family - \$9,000/unit

Retail - \$4.50/sf

ZONING:

Multifamily - 800 units

Single Family - 200 units

Retail – 120,000 square feet

LAND USE: Residential Mixed Use

UTILITIES: City water and sewer

COMMENTS:

- Seller will consider a land use change and rezoning to industrial, which Plant City supports.
- No concurrency issues.
- Rapid building permitting.
- Three day care facilities within minutes.
- Restaurants within minutes.
- Plant City is pro-business.
- Distances:

I-75 – 17 miles

Tampa CBD – 26.5 miles

Tampa International Airport – 31 miles

Lakeland – 1 mile

Orlando – 63 miles

Orlando International Airport – 55 miles

For more information please contact:

BRUCE K. ERHARDT, ALC

Executive Director

(813) 223-6300

Bruce.erhardt@cushwake.com

DEREK W. PETTIGREW

Associate

(813) 223-6300

Derek.pettigrew@cushwake.com

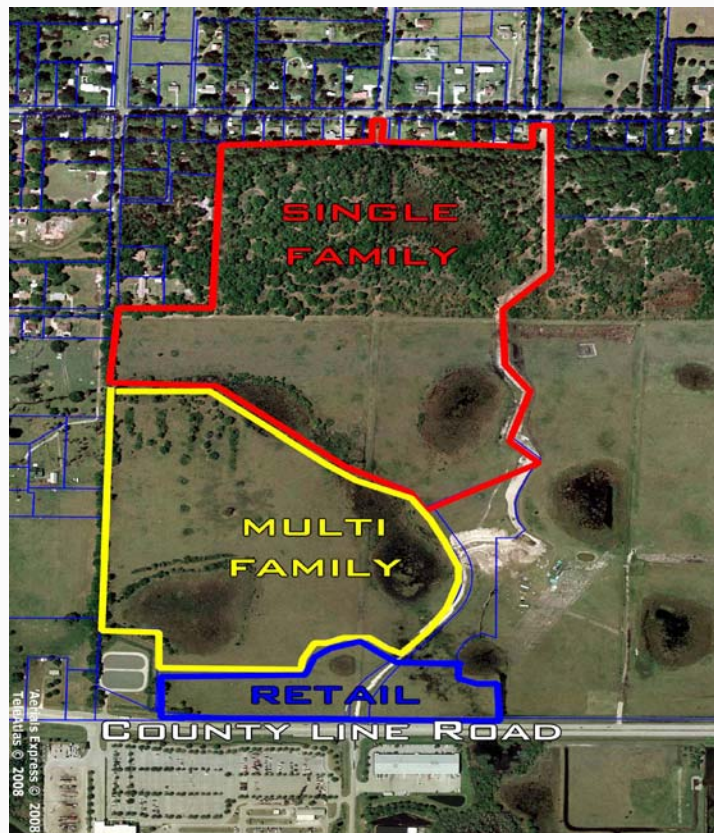
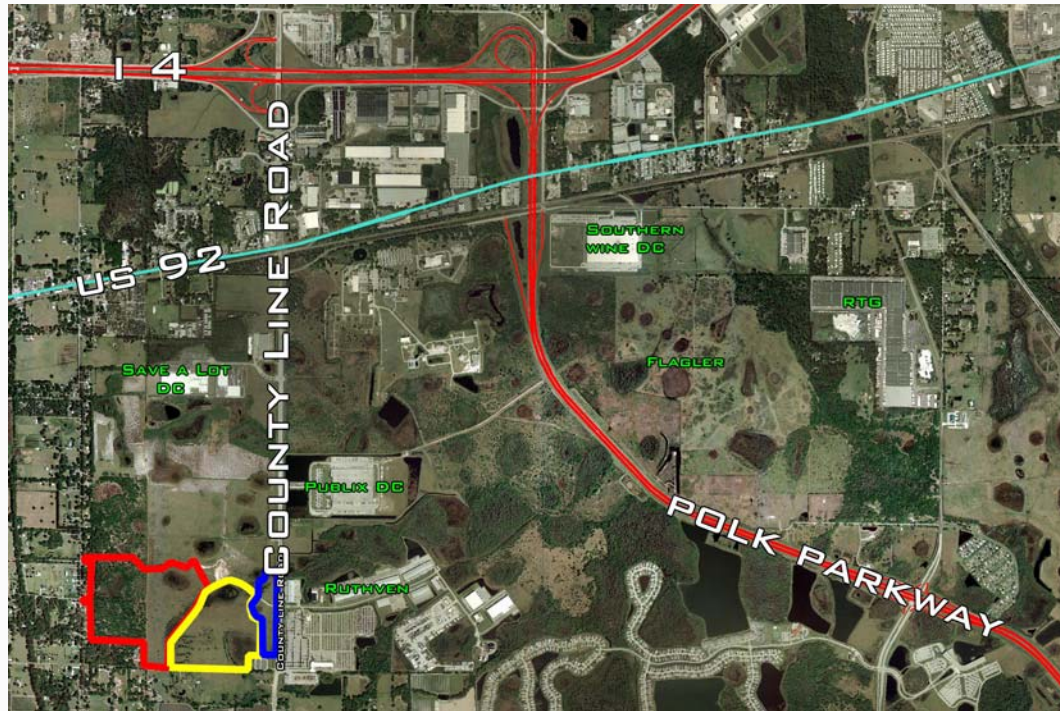
No warranty or representation, express or implied, is made as to the accuracy of the information contained herein, and same is submitted subject to errors omissions, change of price, rental or other conditions, withdrawal without notice, and to any specific listing conditions, imposed by our principals.



One Tampa City Center, Suite 3600
Tampa, FL 33602

**LAND
FOR SALE**

70 Acres, Multifamily
61.85 Acres, Single Family
14 Acres, Retail
Plant City, Hillsborough County, Florida



No warranty or representation, express or implied, is made as to the accuracy of the information contained herein, and same is submitted subject to errors omissions, change of price, rental or other conditions, withdrawal without notice, and to any specific listing conditions, imposed by our principals.

**CUSHMAN &
WAKEFIELD®**
Global Real Estate SolutionsSM
One Tampa City Center, Suite 3600
Tampa, FL 33602