



Property Information:

- **Location:** 1601 E. Columbus Drive
- **Site Size:** 38,430 square feet land
- **Frontage:** 315' frontage E. Columbus Dr.
122' frontage on N. 16th Street
- **Building Size:**
 - Two-stories, 14,858 total sf
 - Approximately 7,000 SF per floor; concrete frame with masonry and brick infill walls
- **Zoning:** YC-5, General Commercial
- **Price:** Negotiable

Property Highlights:

- Located within Ybor City National Landmark Historic District.
- Easy access to Interstates (I-4 and I-275) and downtown Tampa.
- Located directly across from America's oldest family owned premium cigar makers, J.C. Newman Cigar Company; the last operating cigar factory in Cigar City.

For more information, please contact:

Jeannette Jason, CCIM
Director
+1 813 254 4900
jeannette.jason@cushwake.com

Brian Breeding, CCIM
Associate
+1 813 223 6300
brian.breeding@cushwake.com

201 North Franklin Street
Suite 3300
Tampa, Florida 33602
phone: +1 813 223 6300



FOR LEASE – HISTORIC SANCHEZ + HAYA BUILDING

Ybor City

Tampa, Florida 33605

Building History:

Built in 1910, this two story Mission-style commercial building replaced an earlier office for the Sanchez and Haya development company that presumably burned in the fire which devastated Ybor City in 1908. Consequently, this structure was built as fireproof construction with an exposed concrete frame with concrete floors and flat roof, infilled with brick on the first floor areas adjacent to other lots. The remainder of the structure was infilled with wood framing covered with textured stucco. Original interior walls consisted of steel “ladder” studs with plaster over metal lath.

Rectangular in plan, the 70'x121' building features a full width open porch and covered balcony supported by stuccoed square columns on the main elevation. The façade area over the balcony has a Mission-style parapet with corbelled coping and raised stucco circle and arched ornaments. In addition, “Sanchez & Haya Real Estate Co. 1910” is centered in raised letters in the parapet.

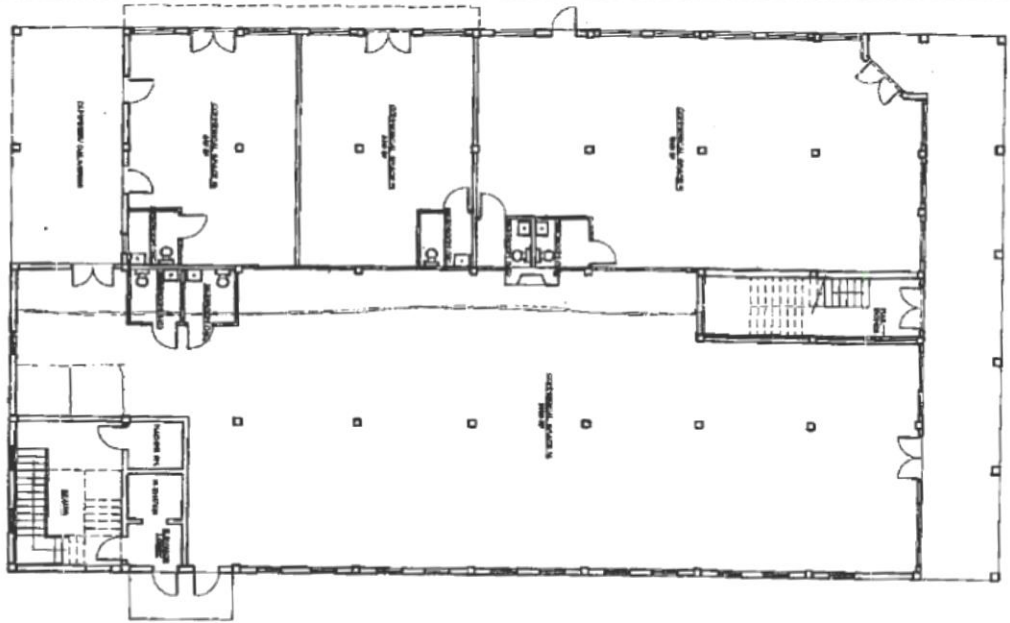


“Source: Historic Preservation Certification Application”

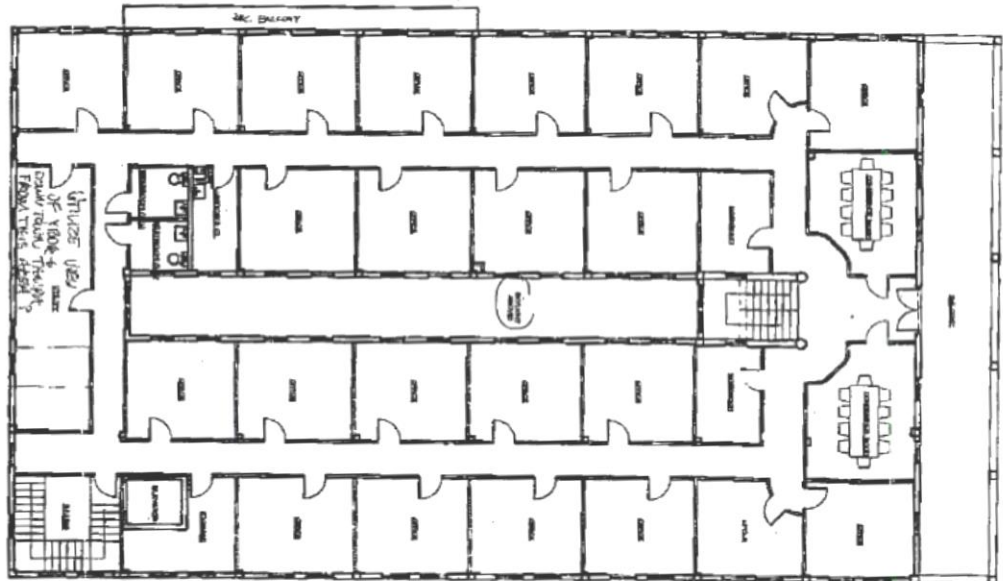



Floor Plan

First Floor



Second Floor



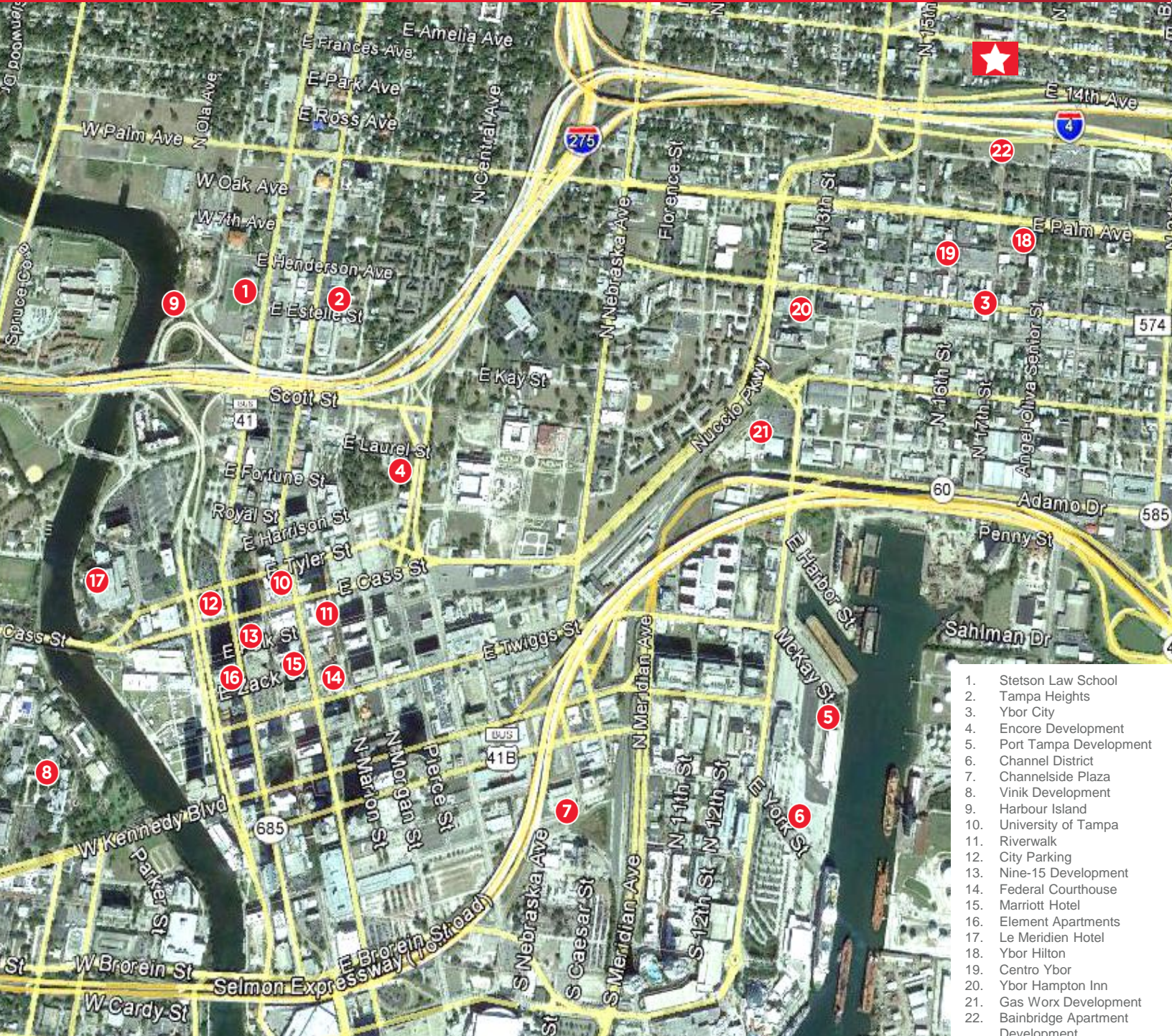
2	<p>Sanchez & Haya Real Estate Co. Bldg. James & Edmonia Taylor 1601 E. Columbus Dr, Ybor City, Tampa, FL</p>	 <p>PRESERVATION RESOURCE, INC. PRESERVATION SERVICE DIVISION 2114 W. Madison Avenue Tampa, FL 33606 813.251.4118 813.251.2575 fax</p>
----------	---	---



FOR LEASE – HISTORIC SANCHEZ + HAYA BUILDING

Ybor City

Tampa, Florida 33605



1. Stetson Law School
2. Tampa Heights
3. Ybor City
4. Encore Development
5. Port Tampa Development
6. Channel District
7. Channelside Plaza
8. Vinik Development
9. Harbour Island
10. University of Tampa
11. Riverwalk
12. City Parking
13. Nine-15 Development
14. Federal Courthouse
15. Marriott Hotel
16. Element Apartments
17. Le Meridien Hotel
18. Ybor Hilton
19. Centro Ybor
20. Ybor Hampton Inn
21. Gas Wox Development
22. Bainbridge Apartment Development