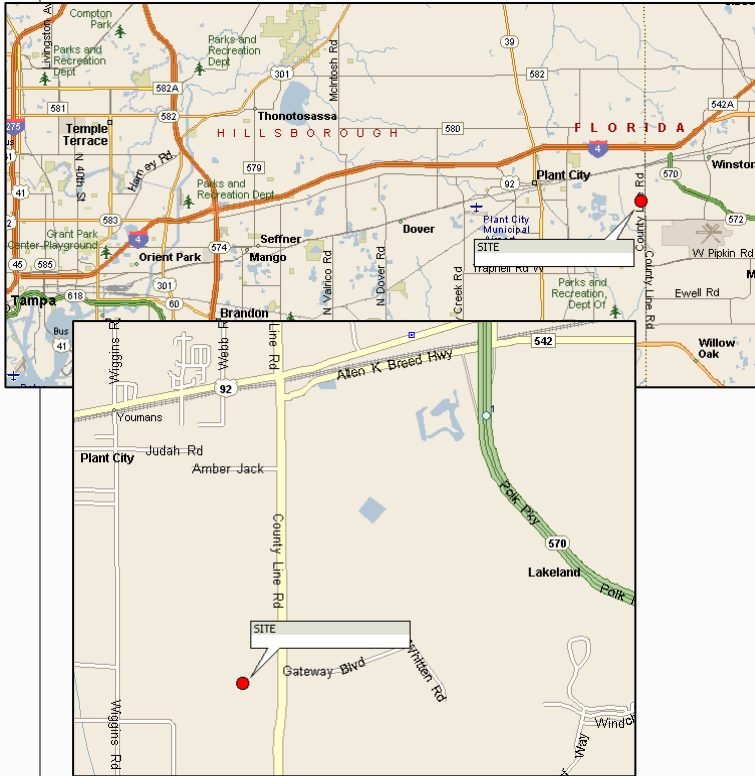


**LAND  
FOR SALE**

**70 Acres, Multifamily  
61.85 Acres, Single Family  
14 Acres, Retail**

Plant City, Hillsborough County, Florida



**LOCATION:** SWQ U.S. Highway 92 and County Line Road (I-4 exit), approximately 7/10 of a mile south of I-4.

**SIZE:**

Multifamily - 70 Ac. Gross, 33.4 Ac. Net

Single Family - 61.85 Ac. Gross, 43.5 Ac. Net

Retail – 14.51 Ac. Gross, 13.58 Ac. Net

Contiguous 260.79 gross and 151.15 usable acres available.

**PRICE:**

Multifamily - \$8,000/unit

Single Family - \$9,000/unit

Retail - \$4.50/sf

**ZONING:**

Multifamily - 800 units

Single Family - 200 units

Retail – 120,000 square feet

**LAND USE:** Residential Mixed Use

**UTILITIES:** City water and sewer

**COMMENTS:**

- Seller will consider a land use change and rezoning to industrial, which Plant City supports.
- No concurrency issues.
- Rapid building permitting.
- Three day care facilities within minutes.
- Restaurants within minutes.
- Plant City is pro-business.
- Distances:
  - I-75 – 17 miles
  - Tampa CBD – 26.5 miles
  - Tampa International Airport – 31 miles
  - Lakeland – 1 mile
  - Orlando – 63 miles
  - Orlando International Airport – 55 miles

For more information please contact:

**BRUCE K. ERHARDT, ALC**

Executive Director  
(813) 223-6300  
[Bruce.erhardt@cushwake.com](mailto:Bruce.erhardt@cushwake.com)

**DEREK W. PETTIGREW**

Associate  
(813) 223-6300  
[Derek.pettigrew@cushwake.com](mailto:Derek.pettigrew@cushwake.com)

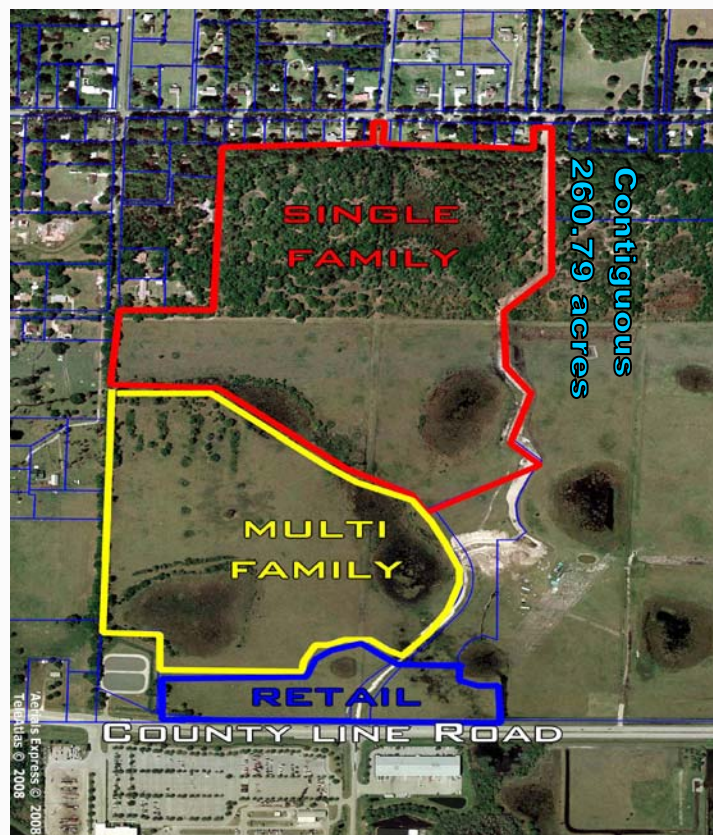
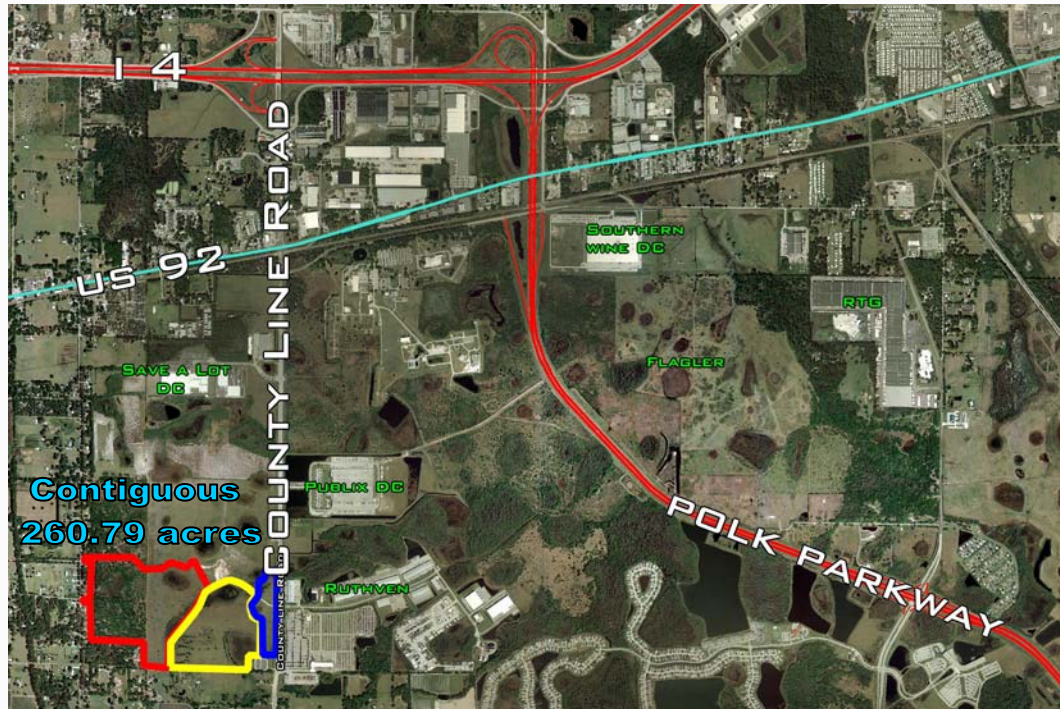
No warranty or representation, express or implied, is made as to the accuracy of the information contained herein, and same is submitted subject to errors omissions, change of price, rental or other conditions, withdrawal without notice, and to any specific listing conditions, imposed by our principals.



Global Real Estate Solutions<sup>SM</sup>  
One Tampa City Center, Suite 3600  
Tampa, FL 33602

**LAND  
FOR SALE**

**70 Acres, Multifamily**  
**61.85 Acres, Single Family**  
**14 Acres, Retail**  
Plant City, Hillsborough County, Florida



No warranty or representation, express or implied, is made as to the accuracy of the information contained herein, and same is submitted subject to errors omissions, change of price, rental or other conditions, withdrawal without notice, and to any specific listing conditions, imposed by our principals.