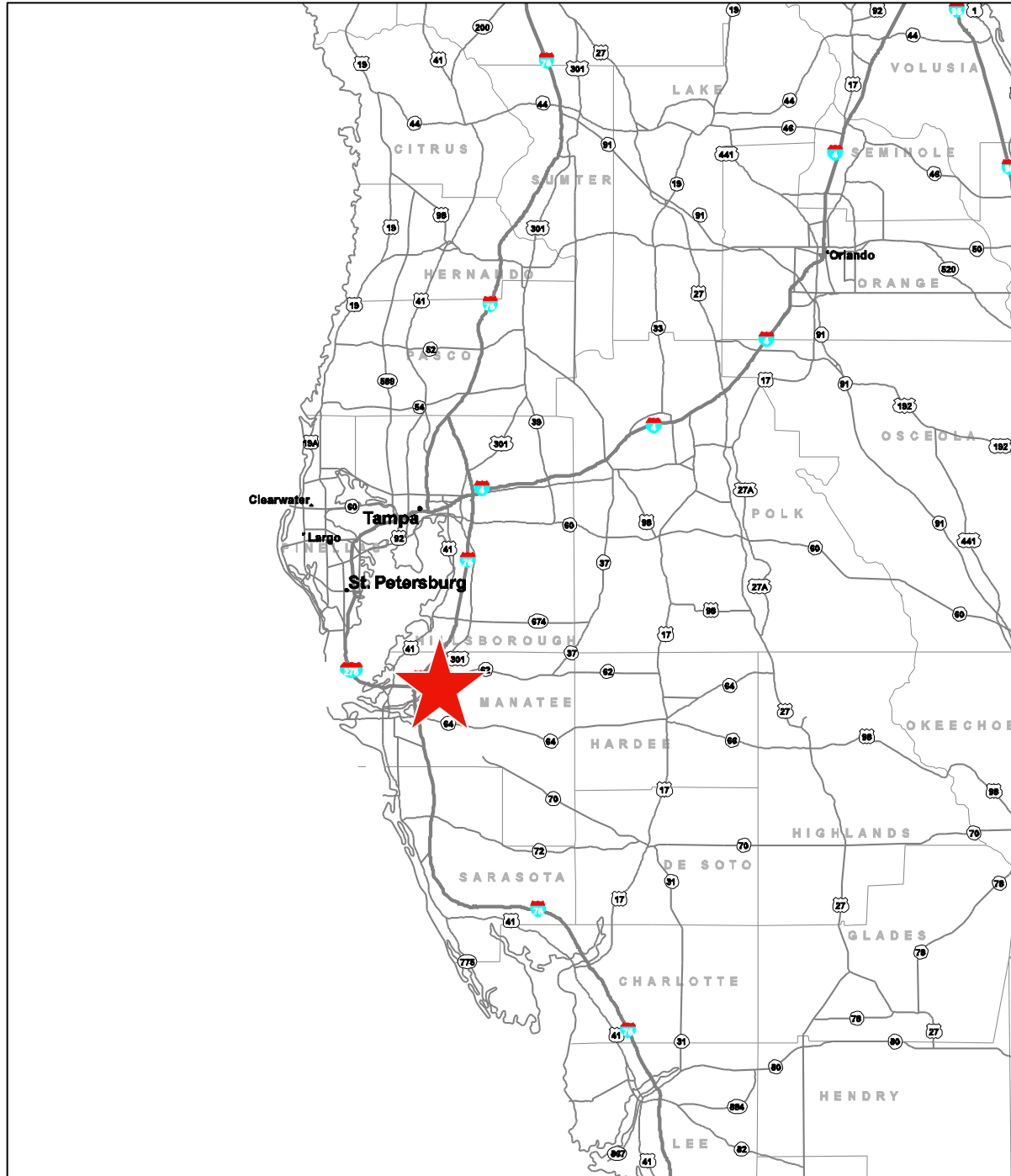
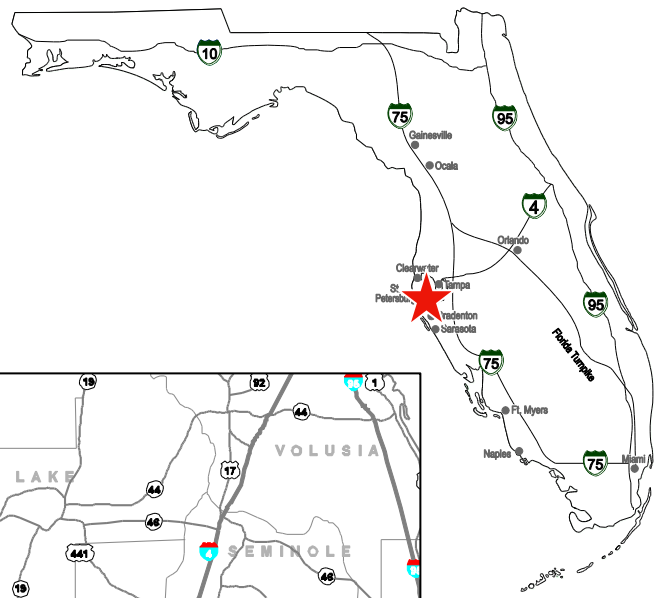


LOCATION INFORMATION



FOR MORE INFORMATION, PLEASE CONTACT:

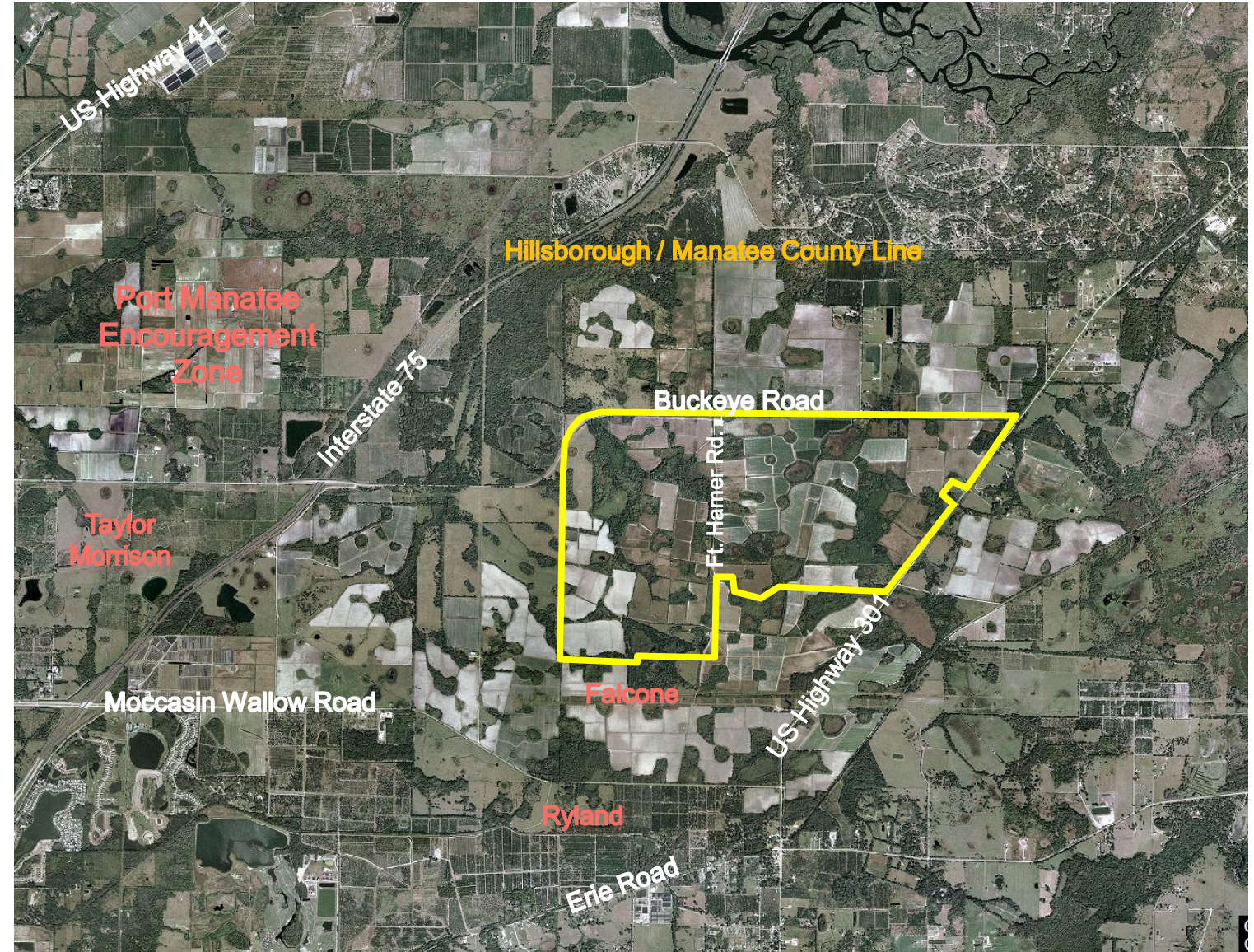
Bruce K. Erhardt, ALC
 Executive Director
 (813) 223.6300
 Bruce.erhardt@cushwake.com
 FL License No. BK144044



2,250 Acres, West Coast Florida

Residential Community Development Opportunity
 North Manatee County, Florida

LAND FOR SALE



FOR MORE INFORMATION, PLEASE CONTACT:

Bruce K. Erhardt, ALC
 Executive Director
 (813) 221.9166
 Bruce.erhardt@cushwake.com
 FL License No. BK144044

CUSHMAN & WAKEFIELD OF FLORIDA, INC.

One Tampa City Center, Suite 3600
 Tampa, FL 33602
 (813) 223.6300
www.cushwakeandfl.com/tampa
 FL License No: B0224938

The depiction in the above photograph of any person, entity, sign, logo or property (other than Cushman & Wakefield's client and the property offered by Cushman & Wakefield) is incidental only, and is not intended to connote any affiliation, connection, association, sponsorship or approval by or between that which is incidentally depicted and Cushman & Wakefield or its client.

The information provided herein is not the product or responsibility of Cushman & Wakefield. No warranty or representation, express or implied, is made as to the accuracy or effectiveness of the information provided, and same is submitted subject to errors, omissions, change of conditions and withdrawal without notice.

This listing shall not be deemed an offer to lease, sublease or sell such property; and, in the event of any transaction for such property, no commission shall be earned by or payable to any cooperating broker except if otherwise provided pursuant to the express terms, rates and conditions of C&W's agreement with its principal, if, as and when such commission (if any) is actually received from such principal. (A copy of the rates and conditions referred to above with respect to this property is available upon request.)



LOCATION

- North Manatee County, on Florida's west coast, between Tampa and Sarasota
- West of U.S. Highway 301, south side of Buckeye Road, east side of Interstate 75
- Part of Tampa Bay MSA

DISTANCES

- 4.5 mi from Interstate 75/Moccasin Wallow exit, via Carter Road
- 4.9 mi from Publix
- 6.5 mi from Interstate 75/Moccasin Wallow exit, via 301
- 7.3 mi from Wal-Mart Super Center
- 9.1 mi from K-Mart
- 9.4 mi from Ellenton Outlet Mall
- 11.5 mi to City of Bradenton CBD
- 14.8 mi to Interstate 75/University exit/Lakewood Ranch employment center
- 21 mi to Sarasota/Bradenton airport

SIZE

2,252± acres gross. 3.2± miles along Buckeye Road and 1.4± miles along US Highway 301. Note: Seller may retain up to 30 acres of future retail land.

ZONING

A-G

LAND USE

Urban Fringe 3

COMMENTS

- Active adult opportunity.
- Easy access to Tampa, St. Petersburg, Sarasota and Bradenton employment centers.
- Three Manatee County future road rights of way traverse the property.

LINK

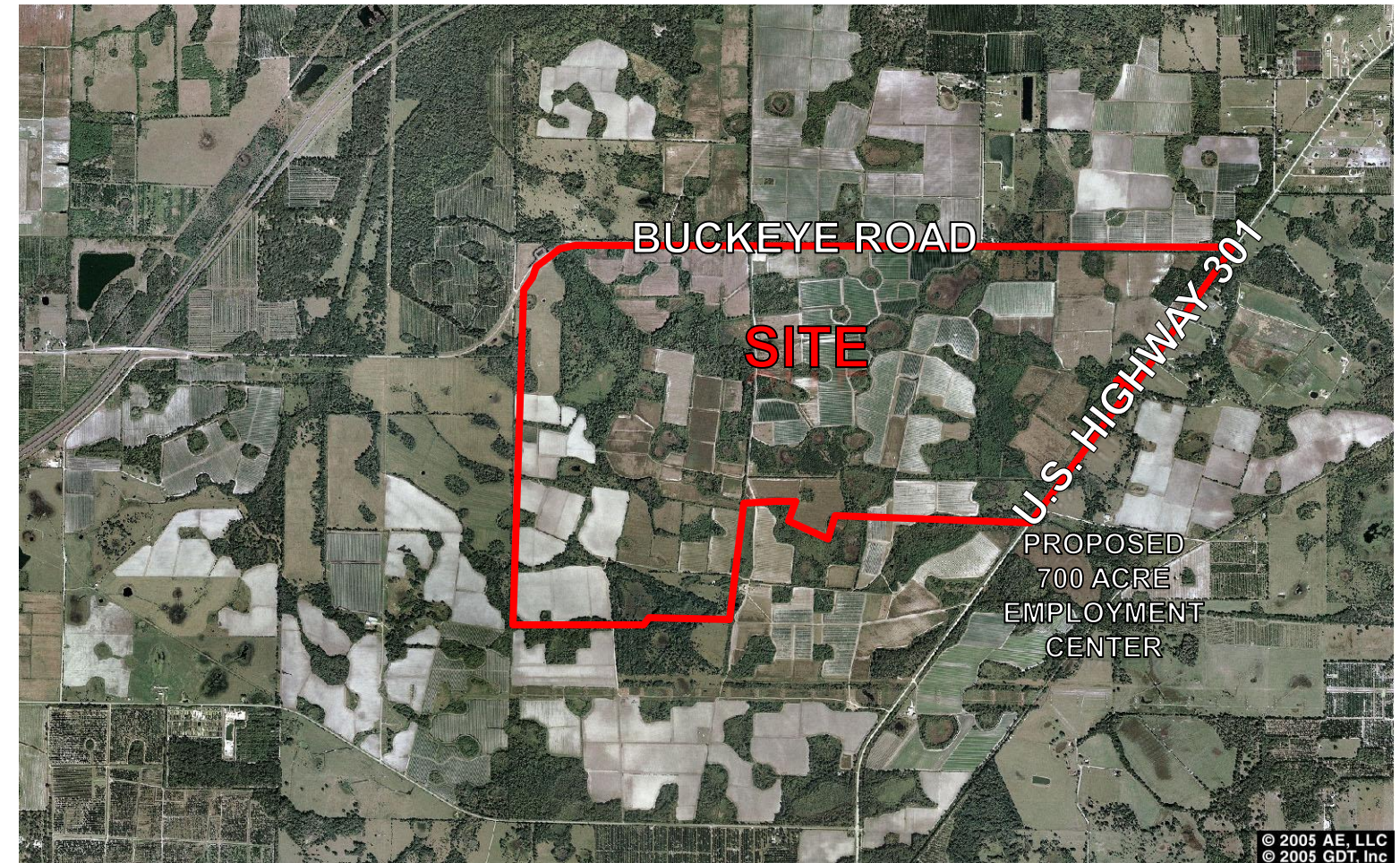
http://www.cushwakelandfl.com/tampa/listing-detail.html?listing_id=63

BROKERAGE

Outside brokers representing Buyers must be compensated by the Buyer. Cushman & Wakefield of Florida, Inc. is not paying an outside broker.

PRICE

\$60,000,000

**MANATEE COUNTY MARKET INFORMATION**

- Part of the Tampa MSA, Sarasota/Bradenton offers a thriving business climate, top rated schools, gourmet restaurants, motivated work force and varied residential neighborhoods. The residents enjoy year round golf, fishing, boating and miles of beautiful beaches and the blue green water of the Gulf of Mexico. Cultural amenities in the area include Mote Aquarium, South Florida Museum, Van Wezel Performing Arts, Ringling Museum, Dali Museum and University of South Florida Museum of Science and Industry.
- 2012 population – 329,828. 2016 projection is 350,672.
- 2012 median age – 44.7
- 2012 median household income - \$46,051.
- Unemployment rate is 8.8% (down from 12.4% in 2010).
- Manatee County is part of the seven county area being marketed by the Tampa Bay Partnership. This regional organization works with its partners to market the region internationally, to conduct regional research and to coordinate efforts to influence business and government issues that impact economic growth and development. The Partnership area total population in 2012 was over 4 million and the 2016 projection is over 4.3 million.
- Lakewood Ranch, a 28,000 acre development, is an employment center located 18 miles south, with more than 3 million square feet commercial office space. This development also includes Manatee Technical Institute, Manatee Community College, Lake Erie College of Osteopathic Medicine and Keiser College.