



Stand	Acre	Species	Forest Type	Est. Year
1	7.36	Loblolly	Pine Plantation	1982
2	56.41	Gums	Natural Pine/Hardwood	2003
3	0.28	Loblolly	Pine Plantation	1965
7	307.4	Slash Pine	Pine Plantation	1997
8	66.01	Pond Pine	Pine Plantation	2003
10	26.04	Slash Pine	Natural Pine	1955
11	107.71	Gums	Natural Pine/Hardwood	1960
14	40.44	Pond Pine	Natural Pine/Hardwood	1990
16	420.75	Loblolly	Pine Plantation	1991
17	34.36	Slash Pine	Natural Pine	1991

Grid points are two chains by two chains 1 of 2

Non - Forest Briar Bay East

1:15,840

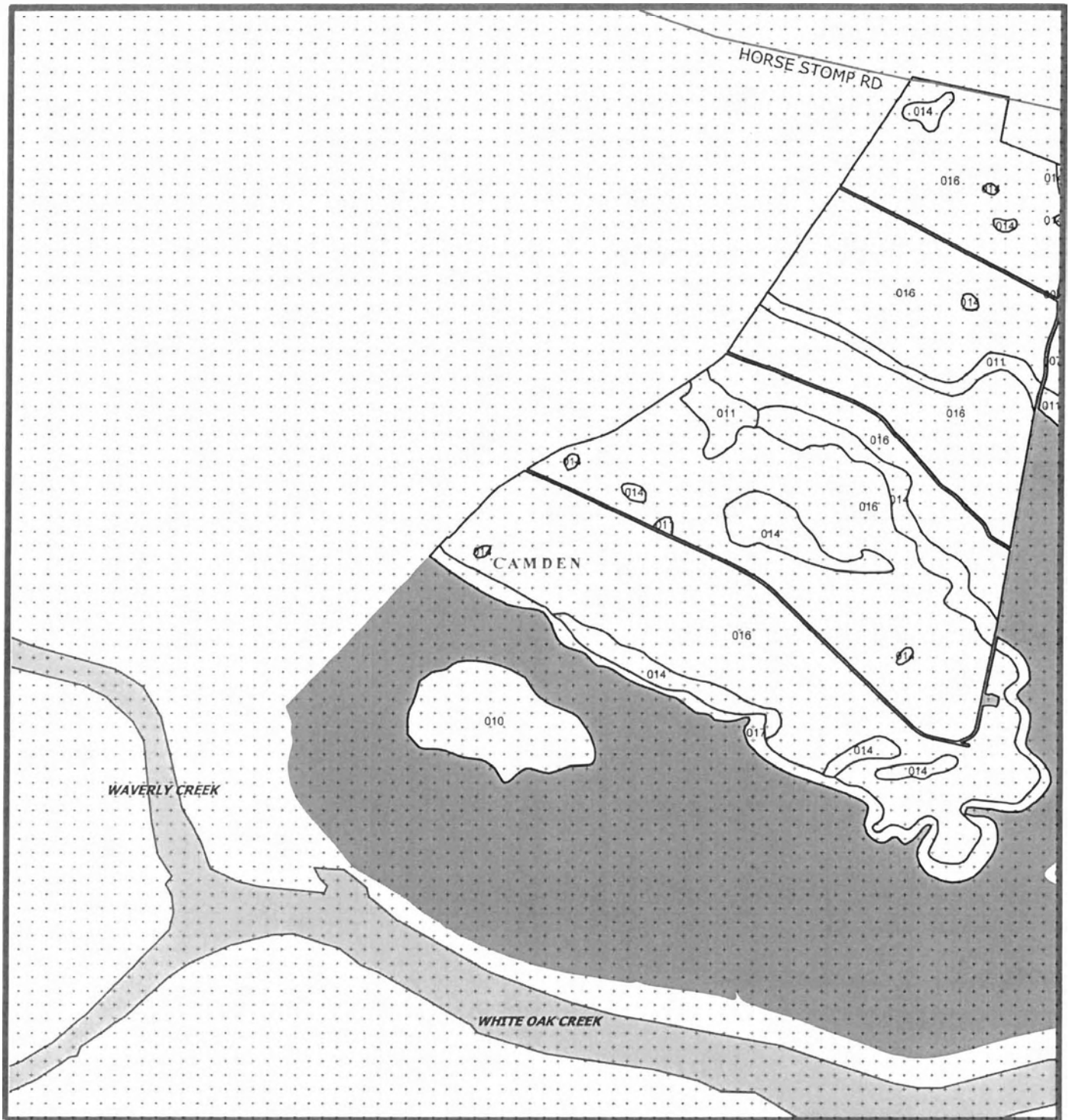
The information provided on this map is believed to be accurate and is based on the best information available at this time, however, this information is in no way guaranteed.

0 0.1 0.2 0.4 0.6 Miles

Briar Bay East  
Blue Sky Timber Properties LLC  
Camden County, GA  
1540.6 +/- acres

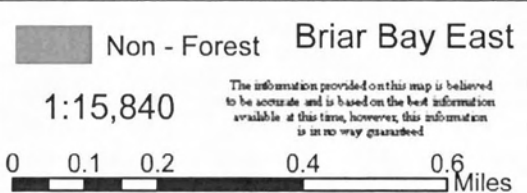
©1984-2002 by Tele Atlas North America, Inc.





Stand	Acre	Species	Forest Type	Est. Year
NF	2.6		Company Road	
NF	0.6		Borrow	
NF	452.1		Marsh	
NF	19.3		Company Road	
NF	0.3		Building	

Grid points are two chains by two chains 2 of 2



Briar Bay East  
 Blue Sky Timber Properties LLC  
 Camden County, GA  
 1540.6 +/- acres  
 ©1984-2002 by Tele Atlas North America, Inc.





Stand	Acre	Species	Forest Type	Est. Year
1	65.65	Gums	Natural Pine/Hardwood	1956
2	215.94	Loblolly	Pine Plantation	1990
3	39.61	Slash Pine	Natural Pine	1948
4	148.81	Loblolly	Pine Plantation	1990
5	100.6	Oak Deciduous	Natural Pine/Hardwood	1992
6	20.64	Gums	Natural Pine/Hardwood	1995
14	258.12	Loblolly	Pine Plantation	1990
17	52.08	Loblolly	Pine Plantation	1992
18	74.7	Loblolly	Pine Plantation	1992
19	118.11	Loblolly	Pine Plantation	1992
320	5.05	Slash Pine	Natural Pine	1948

Grid points are two chains by two chains

1 of 2

Non - Forest Briar Bay West

1:15,840

The information provided on this map is believed to be accurate and is based on the best information available at this time, however, this information is in no way guaranteed.

0 0.1 0.2 0.4 0.6 Miles

Briar Bay West  
Blue Sky Timber Properties LLC  
Camden County, GA  
1438.4 +/- acres

©1984-2002 by Tele Atlas North America, Inc.







Stand	Acre	Species	Forest Type	Est. Year
NF	18.5		Company Roads	
NF	662.4		Marsh	

Grid points are two chains by two chains

2 of 2

Non - Forest Briar Bay West

1:15,840

The information provided on this map is believed to be accurate and is based on the best information available at this time, however, this information is in no way guaranteed.

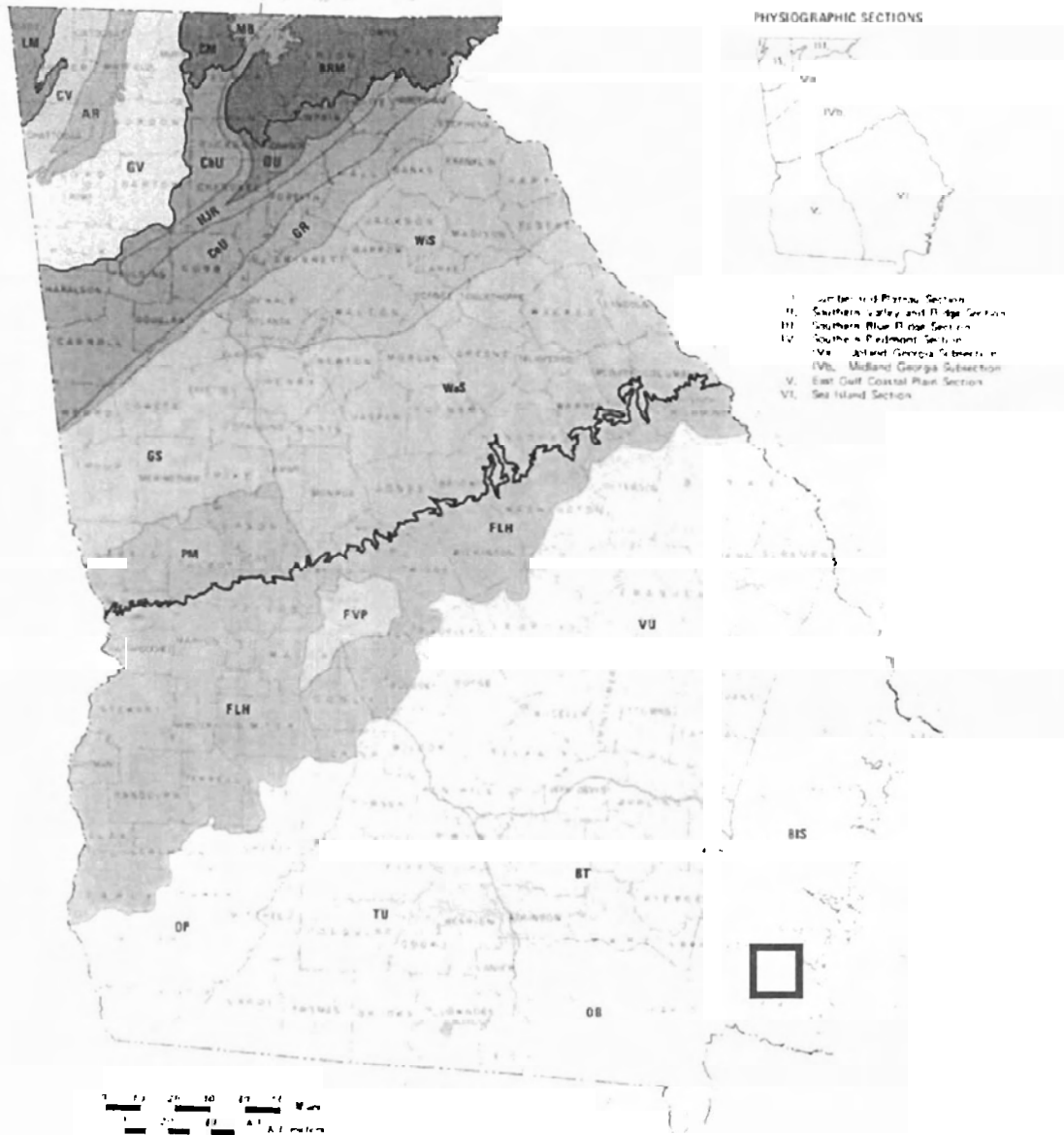
0 0.1 0.2 0.4 0.6 Miles

Briar Bay West  
Blue Sky Timber Properties LLC  
Camden County, GA  
1438.4 +/- acres

©1984-2002 by Tele Atlas North America, Inc.



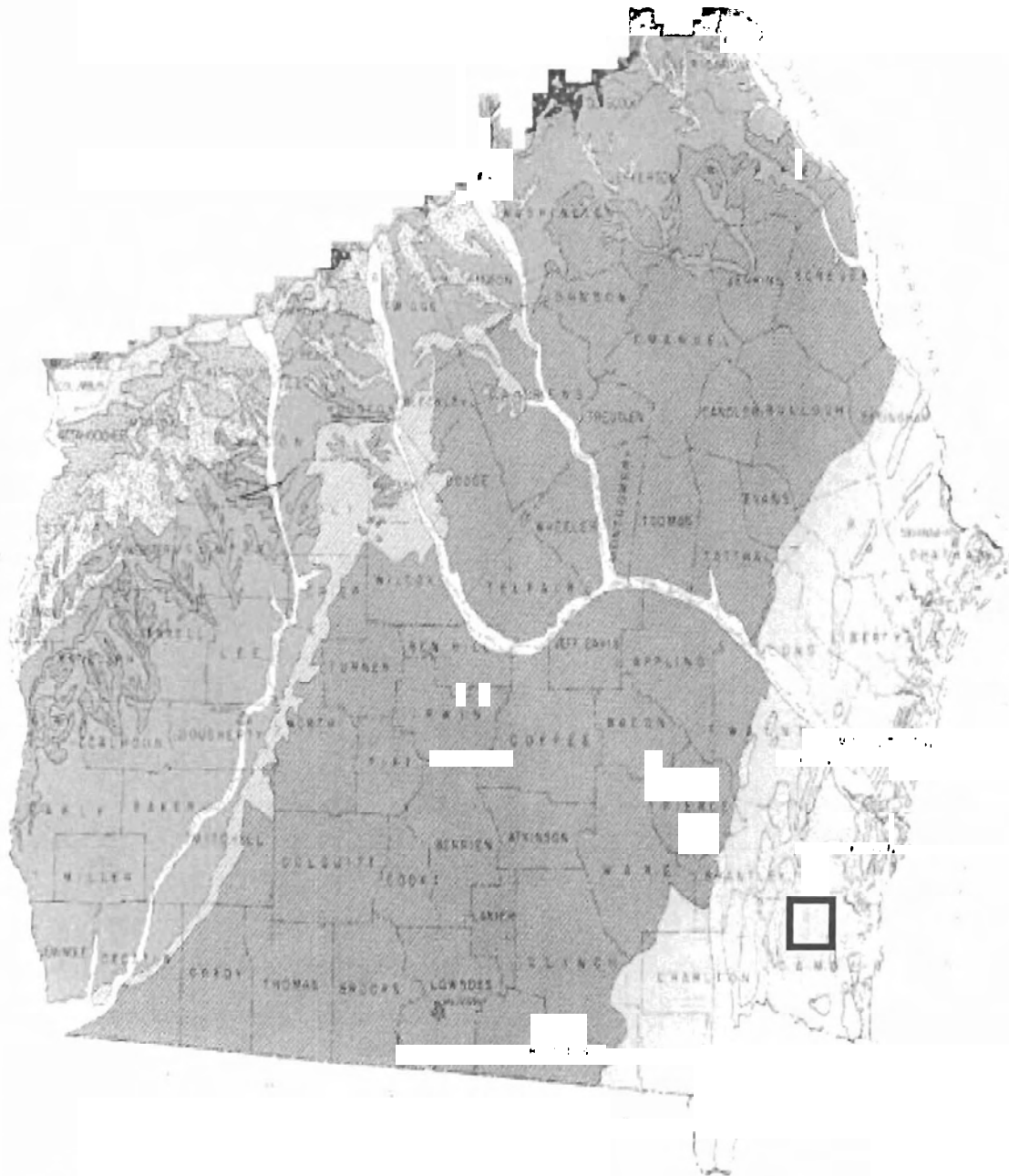
# GEORGIA PHYSIOGRAPHIC REGIONS



**BIS BARRIER ISLAND SEQUENCE DISTRICT**

**SUBJECT PROPERTY AREA**

# GEOLOGIC MAP OF GEORGIA - COASTAL PLAIN



**QUATERNARY MARSH AND LAGOON DEPOSITS**



**SUBJECT PROPERTY AREA**

**Figure 1 – The Property has a land-use history for the production of forest products.**



**Figure 2 – Areas of the Property are depressional and support hydrophytic vegetation in a marsh environment.**



**Figure 3 – A sign for Union Camp was observed at the north boundary of the Property.**



**Figure 4 – An open pavilion and camper are at the hunt club camp on the Property.**





**Figure 5 – A small wood-frame, enclosed structure is also at the hunt club camp.**



**Figure 6 – An earthen berm is used as a backstop for a rifle sighting range located near the camp.**



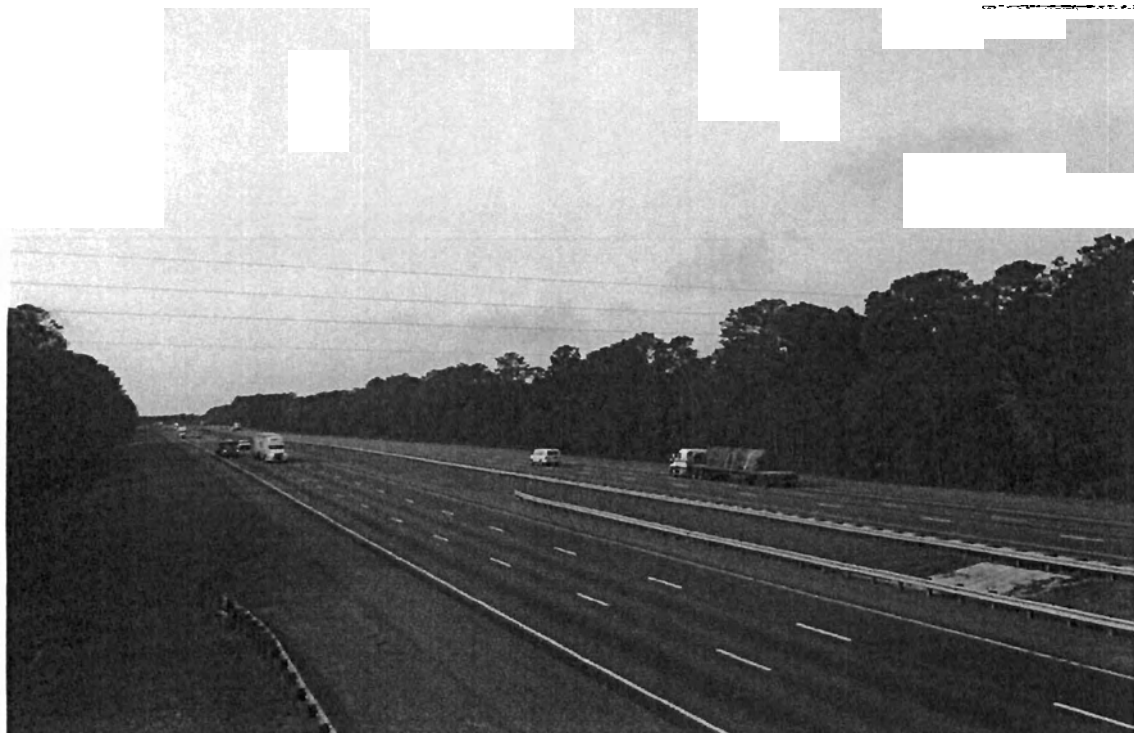
**Figure 7 – A typical shooting house as observed on the Property.**



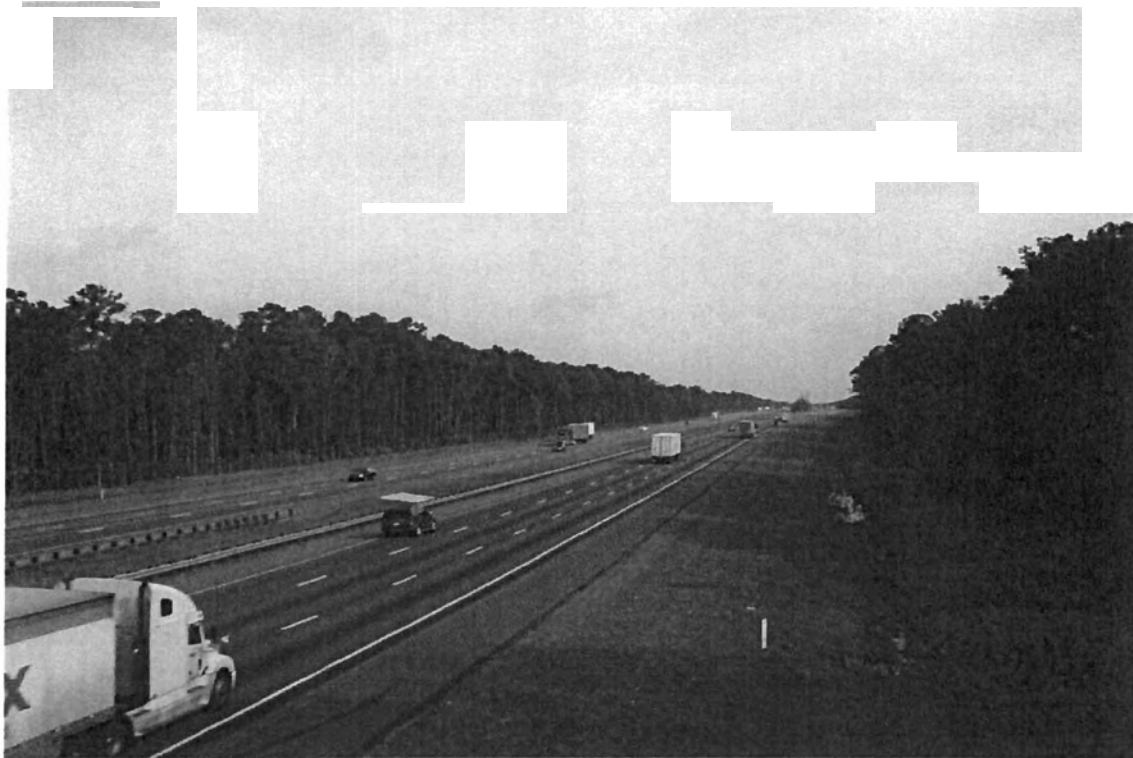
**Figure 8 – A view west along Horse Stomp Road from its intersection with Head Road.**



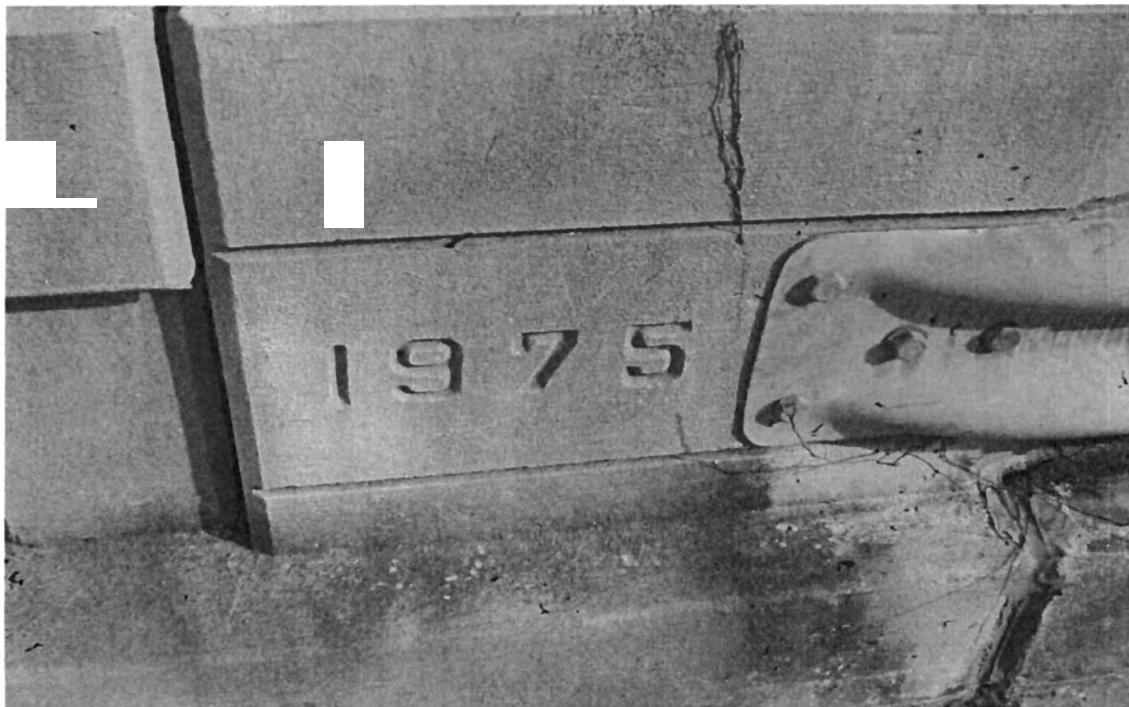
**Figure 9 – A view further west along Horse Stomp Road.**



**Figure 10 – A view south along Interstate 95 adjoining the Property.**



**Figure 11 – A view north along Interstate 95 from the overpass at Horse Stomp Road.**



**Figure 12 – The cement overpass at Horse Stomp Road is dated 1975.**





**Figure 13 – A view south down Head Road from its intersection with Horse Stomp Road across the east side of the Property.**



**Figure 14 – One of numerous locked forest road gates along the south side of Horse Stomp Road used to access the Property interiors.**



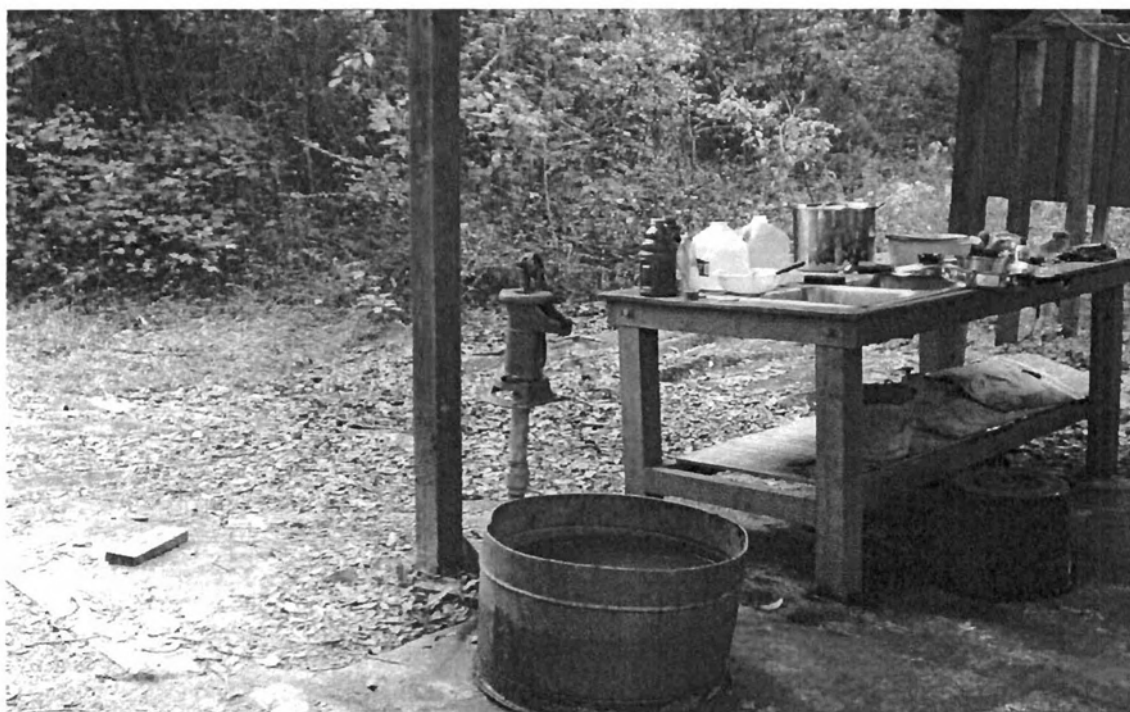
**Figure 15 – A view south along one of the many interior forest roads.**



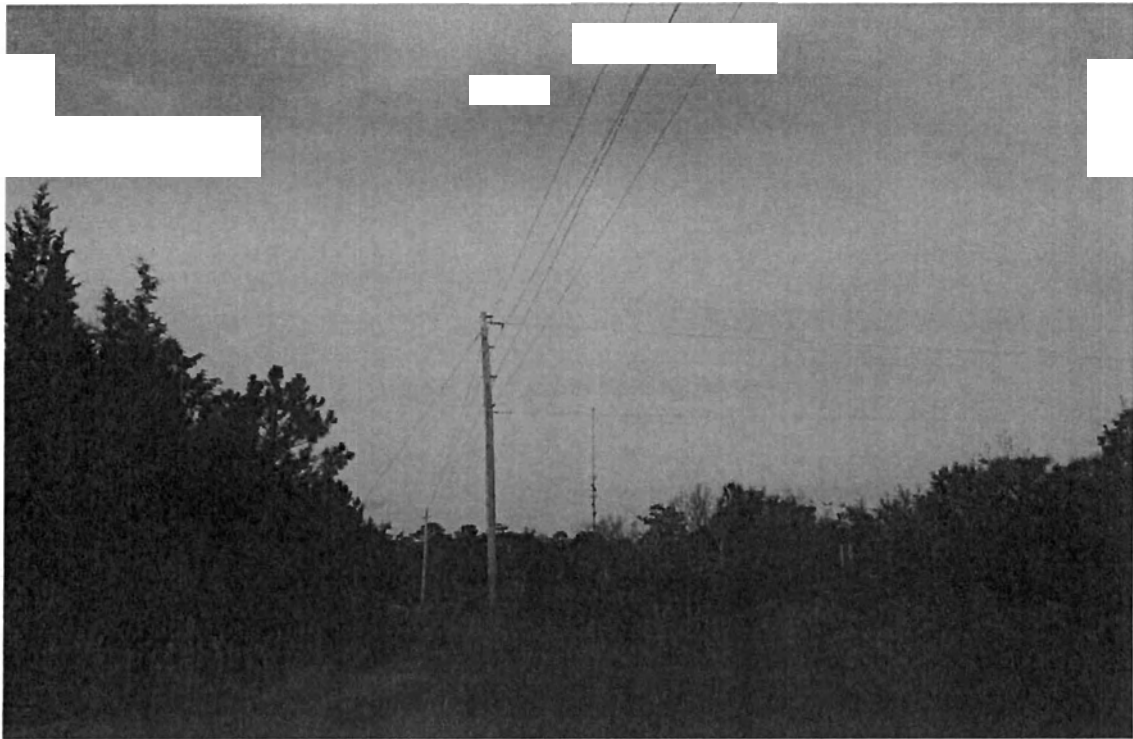
**Figure 16 – A view north of a typical forest road crossing the Property.**



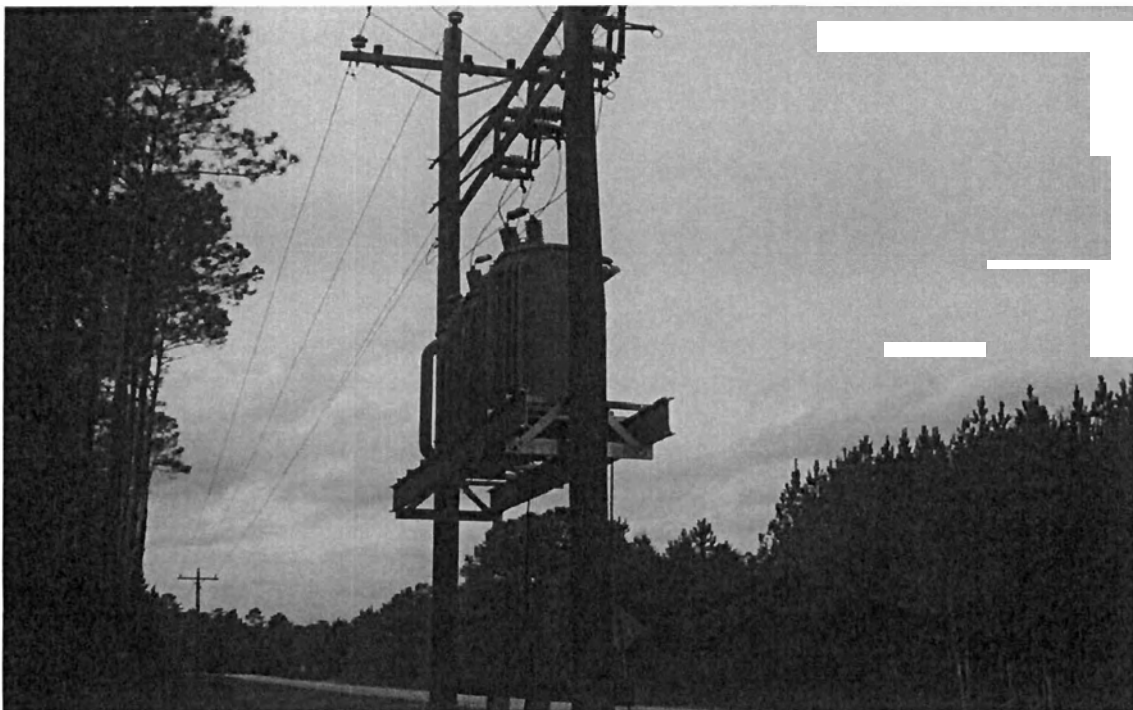
**Figure 17 – A concrete slab is used to cross one of the many creeks and sloughs draining the Property.**



**Figure 18 – A water well was observed at the hunt camp on the Property.**



**Figure 19 – A view west of a typical single pole electrical line along Horse Stomp Road.**

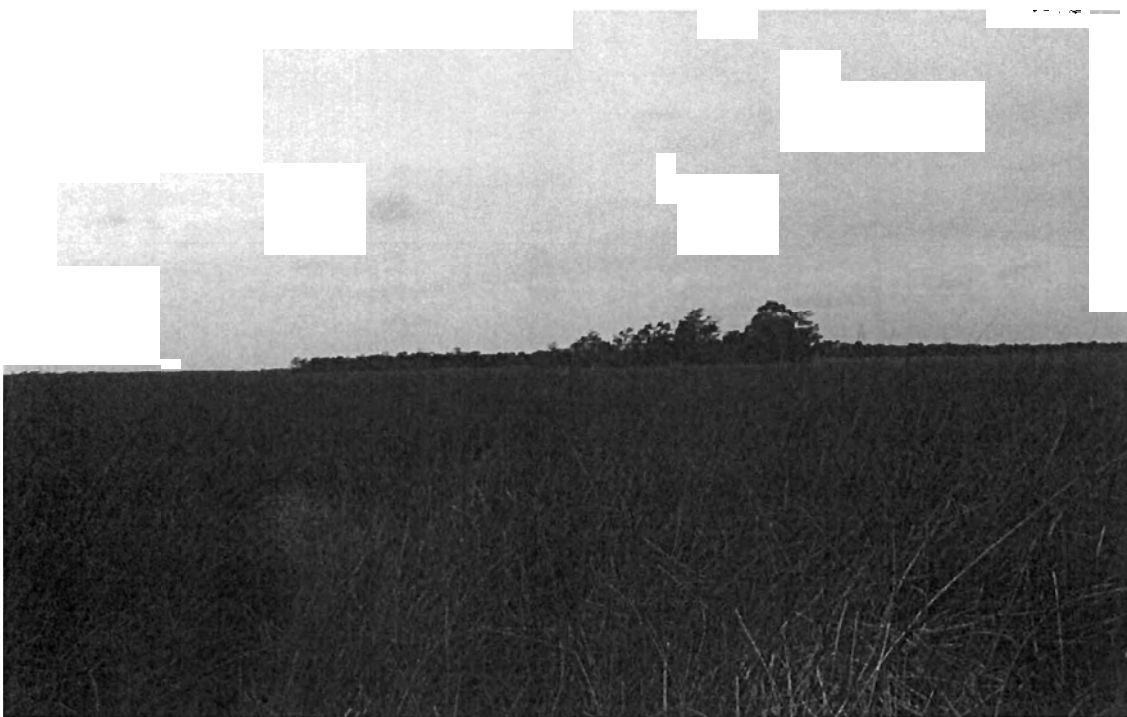


**Figure 20 – Three large 144 KVA – 100 amp transformers were observed adjoining the Property along the south right-of-way of Horse Stomp Road.**





**Figure 21 – One of the numerous creeks draining the Property.**



**Figure 22 – A view south across the tidal marsh adjoining White Oak Creek.**



**Figure 23 – Both of the dump sites observed on the Property consist of inert items.**



**Figure 24 – A discarded refrigerator was observed on the east side of the Property.**



**Figure 25 – A small area was observed along an interior forest road that was used as a borrow pit for road bed materials.**



**Figure 26 – A typical single family rural residence adjoining the Property from Horse Stomp Road.**

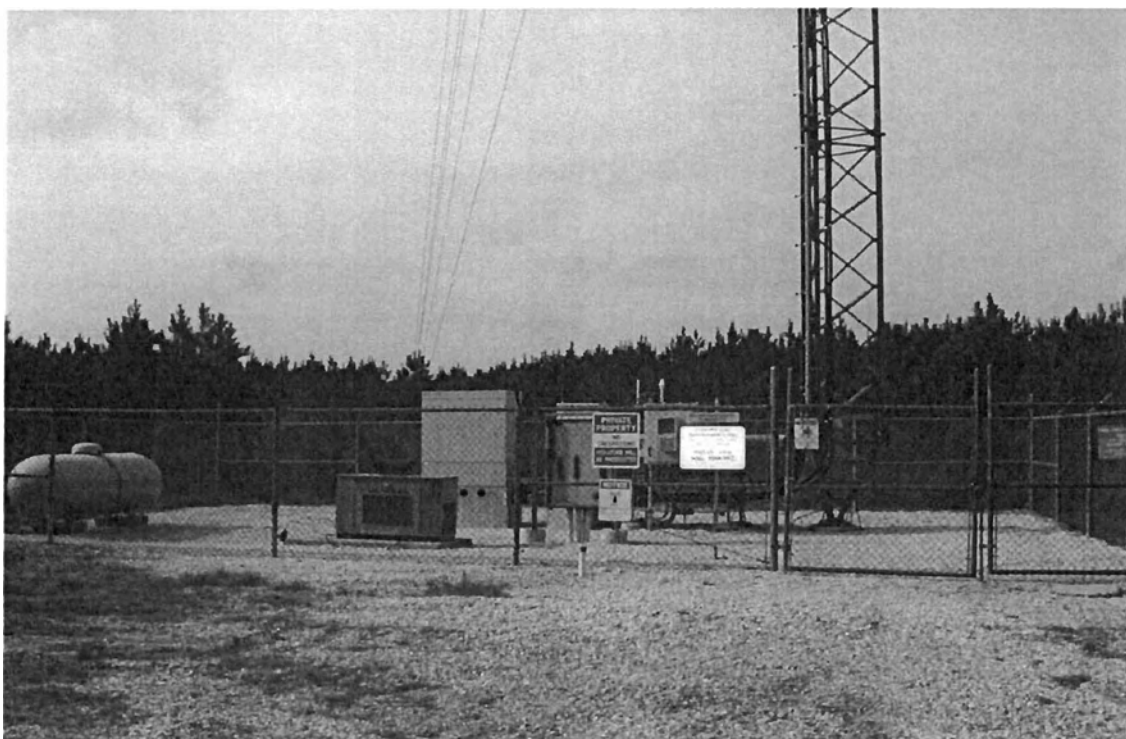


**Figure 27 – A Methodist church adjoins the Property from the north side of Horse Stomp Road.**

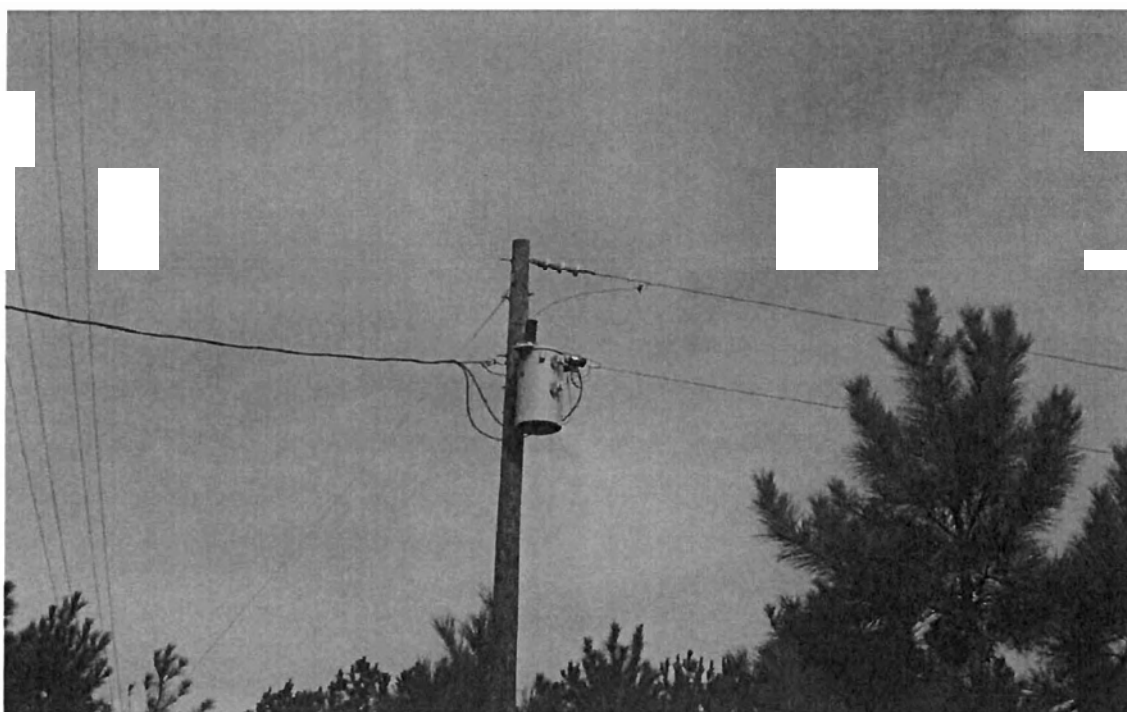


**Figure 28 – Quarterman Cemetery adjoins the west boundary of the Property.**





**Figure 29 – Crown Castle International Corp. owns and operates a cellular tower adjoining the Property at 546 Head Road at site #809392.**



**Figure 30 – A pole mounted transformer serves electricity to the tower site.**

## **APPENDIX 3**

**A. Aerial Photographs (1995, 1981, 1965, 1953)**

**B. USDA Soils Map**

**C. Georgia Highway Dept. Map - 1952**

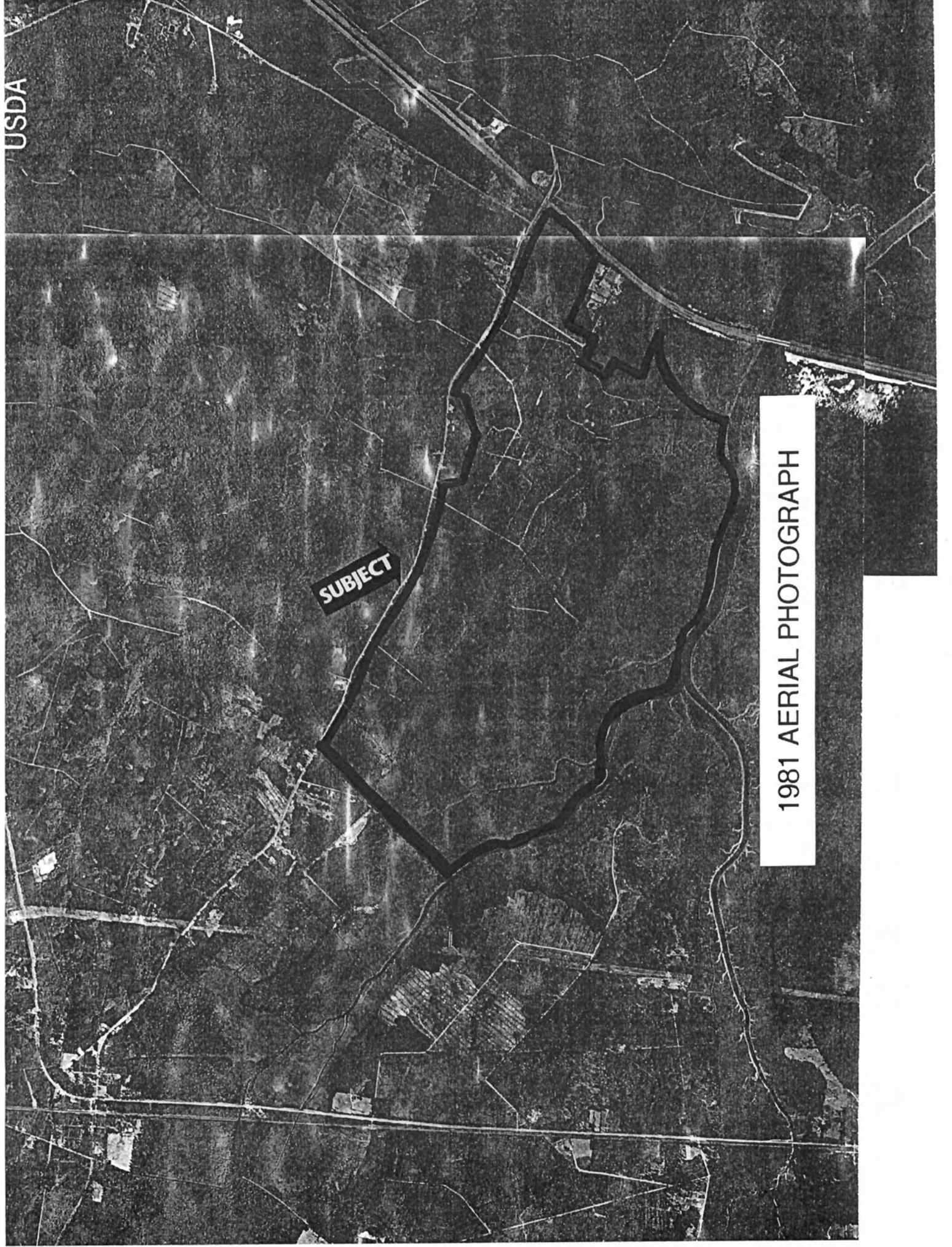
**D. Tract Reconnaissance Form / Dump Site Records**

**E. Findings Maps 1 and 2**



1995 AERIAL PHOTOGRAPH





**SUBJECT**

1981 AERIAL PHOTOGRAPH