



Opportunity. Location. Community.

- Three Signalized Intersections; left turn deceleration lanes and multiple access points
- 25,000 VPD on S.R.54
- Part of a 1,500 home, upscale golf course residential community
- S.R. 54 is being widened, south of the Property, to four lanes to serve, the dynamic trade area
- 5 new auto dealerships within 1.2 miles, 3 are across the street: Hyundai, Mazda and Chevrolet
- High-growth, Affluent Trade Area
- Property owner will consider Joint Venture development proposals
- 500+ Apartment units built or under construction



[Click for Website](#)



For more information, please contact:

Bruce K. Erhardt, ALC
Executive Director

+1 813 2236300

bruce.erhardt@cushwake.com

Patrick Berman
Managing Director

+1 813 2045363

patrick.berman@cushwake.com

One Tampa City Center
Suite 3300

Tampa, Florida 33602

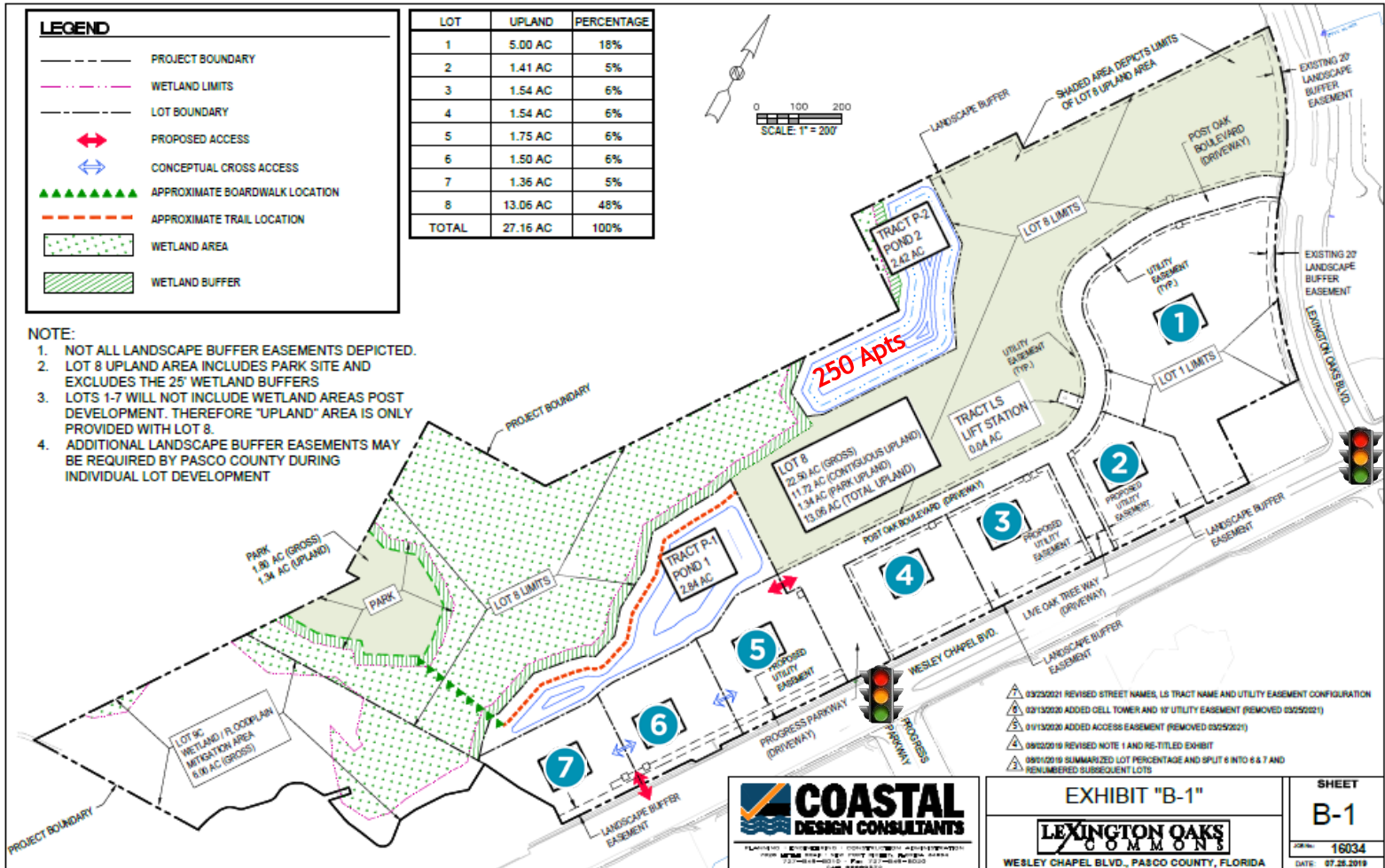
phone: +1 813 2236300

cushmanwakefield.com



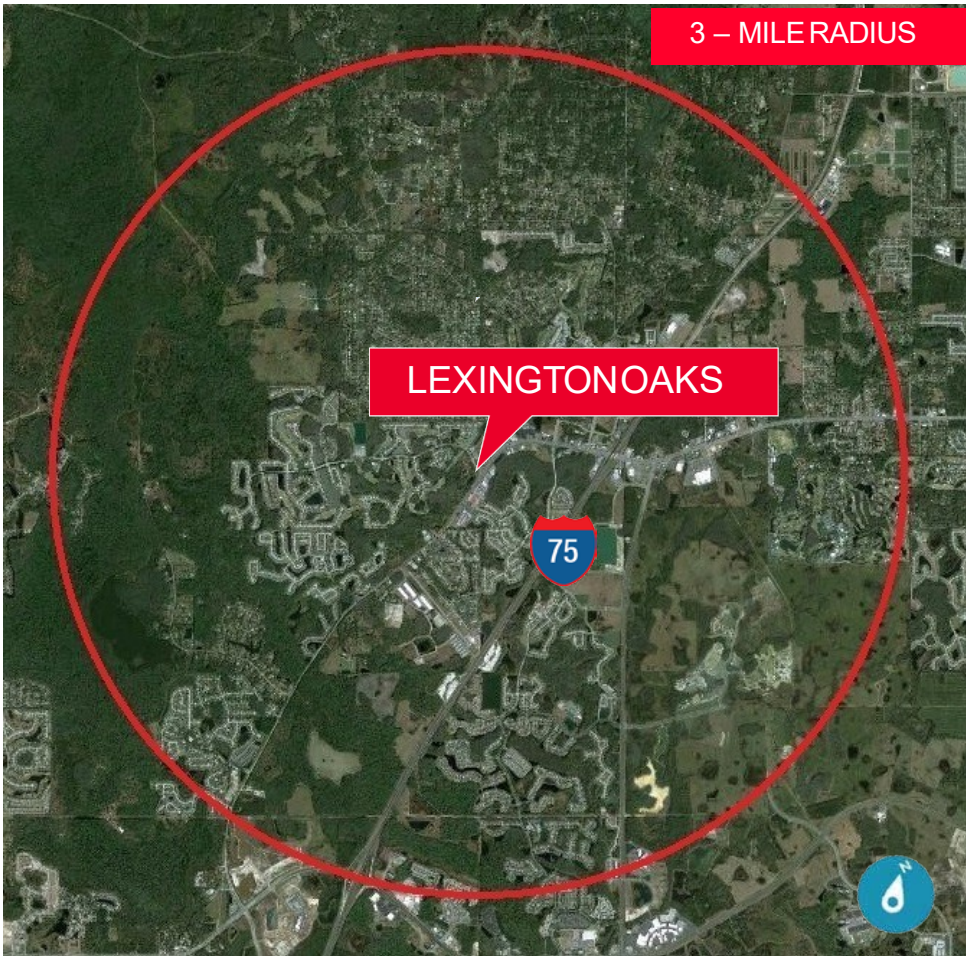
Lexington Oaks is an upscale deed restricted community containing over 1,500 homes.

- 26857-26937 Lexington Oaks Blvd., Wesley Chapel, FL 33544
- Site Area: 14.1 Acres Divisible
- Zoning: C-2, MPUD
- Land Use: R.O.R. (retail / office / residential)
- F.A.R.0.60
- 1,000+ feet of frontage on S.R. 54
- Excellent location for retail, office, hotel, medical, and senior living.
- Hard corner signalized access
- Delivered "Pad Ready" Q4 2021



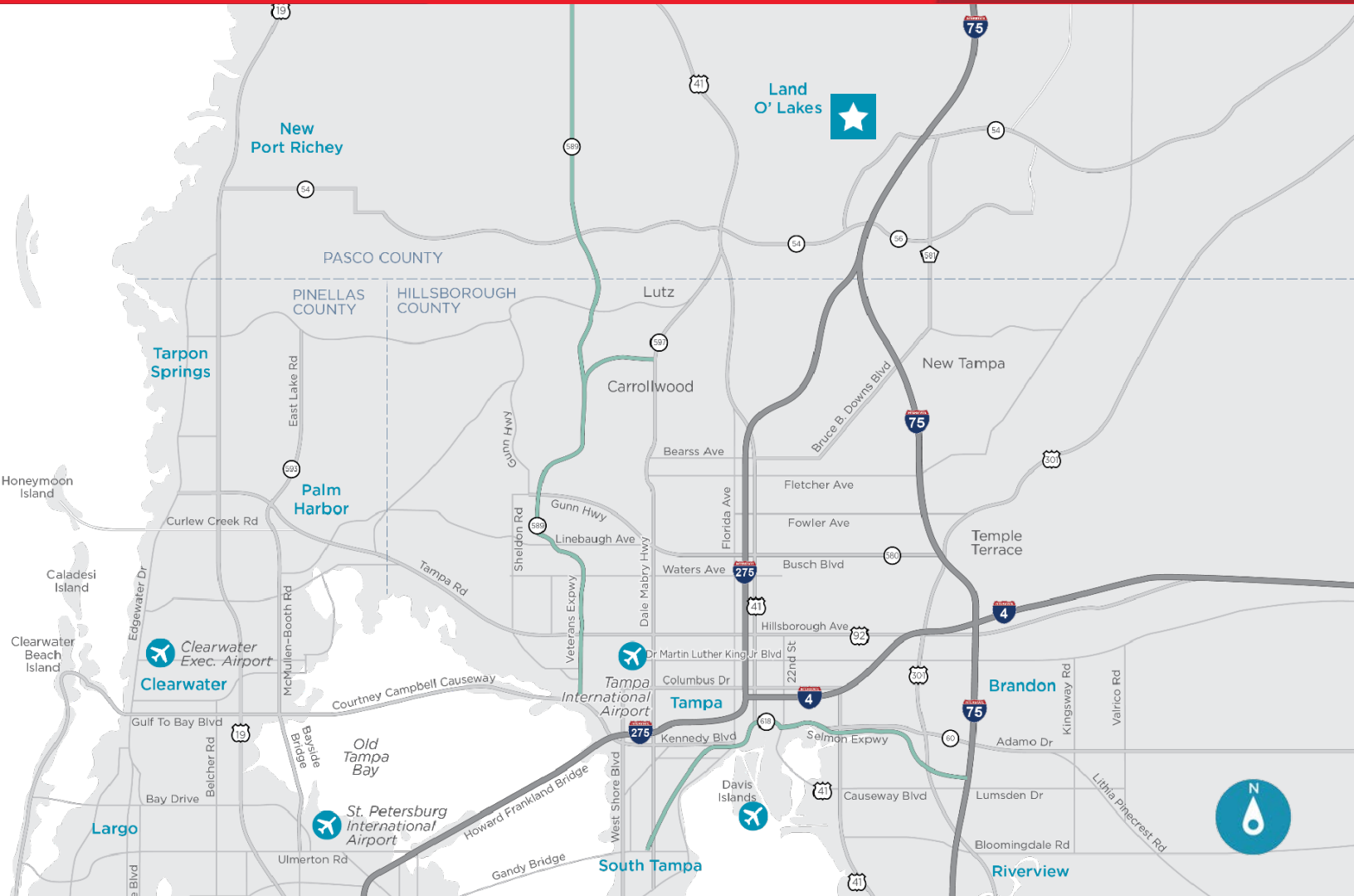
PRICING

- 1** Retail: 5 Acres: \$15.00 PSF
 - 2** Retail: 1.41 AC: \$23.00 PSF
 - 3** Retail: 1.54 AC: \$24.00 PSF
 - 4** Retail: 1.54 Acres: \$25.00 PSF
 - 5** Retail: 1.75 Acres: \$26.00 PSF
 - 6** Retail: 1.50 Acres: \$19.00 PSF
 - 7** Retail: 1.36 Acres: \$18.00 PSF
- Pricing Valid Through 11-30-2021**


Demographics (5-Mile)

| | |
|-----------------------------|---------------|
| Population | 93,146 |
| Population Growth ('21-'26) | 12% |
| Daytime Employment | 19,762 |
| Median Age | 39.1 |
| Average HH Income | \$108,324 |
| Median HH Income | \$91,877 |
| Retail Sales | \$3.6 Billion |

OUT-PARCELS

Pasco County Florida population has grown nearly 40% since 2000

From State Road 54, the retail sites are highly visible, with an average daily traffic count of 25,000 vehicles

Distances and Drive-Times

| | |
|-------------------------------------|-----------|
| I-75 | 0.5Mile |
| The Grove(750ksf) | 1.00Mile |
| Publix | 1.50Miles |
| Tampa Premium Outlets (441ksf) | 3.00Miles |
| Shoppes at Wiregrass Ranch (850ksf) | 3.50Miles |
| Downtown Tampa | 20.0Miles |
| Tampa International Airport | 25.0Miles |

