

Freedom Commerce Center

80 acre mixed use development opportunity



Strategically located between I-95 and Philips Highway on the Southside of Jacksonville with 2.5 miles of frontage on I-95.

FREEDOM
COMMERCE CENTER

HIGHLIGHTS

Current Entitlements

- 1.97 MM sf Office
- 700,000 sf Commercial
- 448 Multi-family units
- 650 Hotel rooms

Entitlements can be converted per
land use conversion matrix

Permitted with SJRWMD, ACOE
with credits, and off-site mitigation

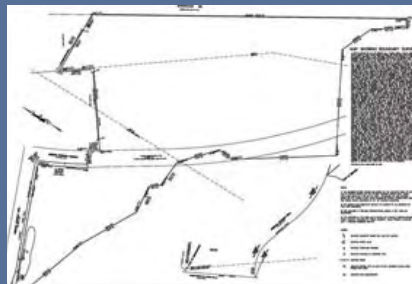
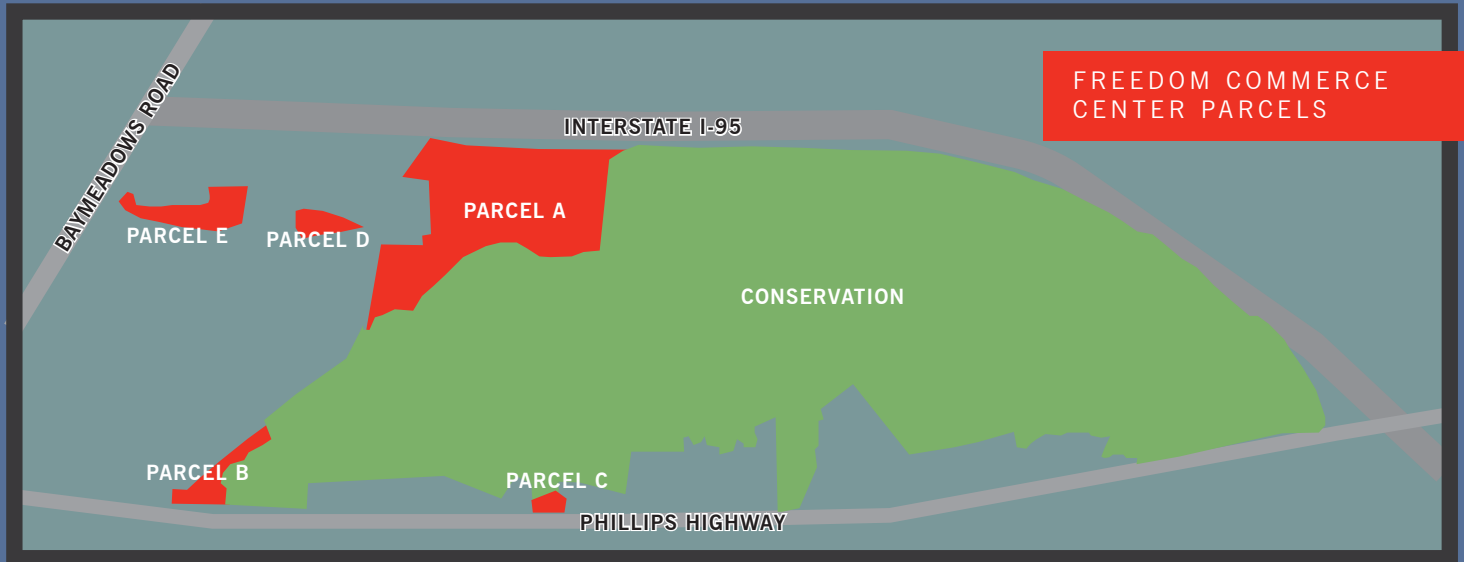
Concurrent for up to 3,453 p.m.
peak hour trips



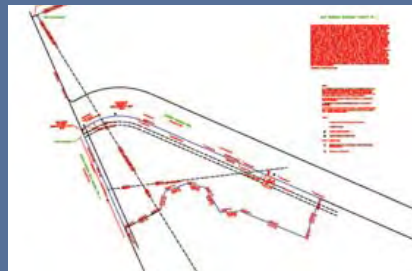
TRAFFIC COUNTS



*Can use this space for
more information on
traffic counts, or demos.*



PARCEL A | 63.3 ACRES



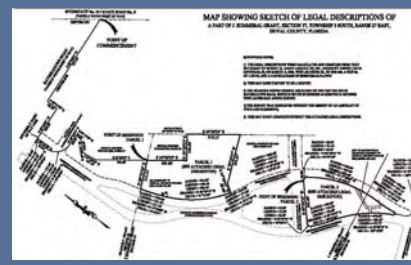
PARCEL B | 6.48 ACRES



PARCEL C | 1.2 ACRES



PARCEL D | 1.5 ACRES

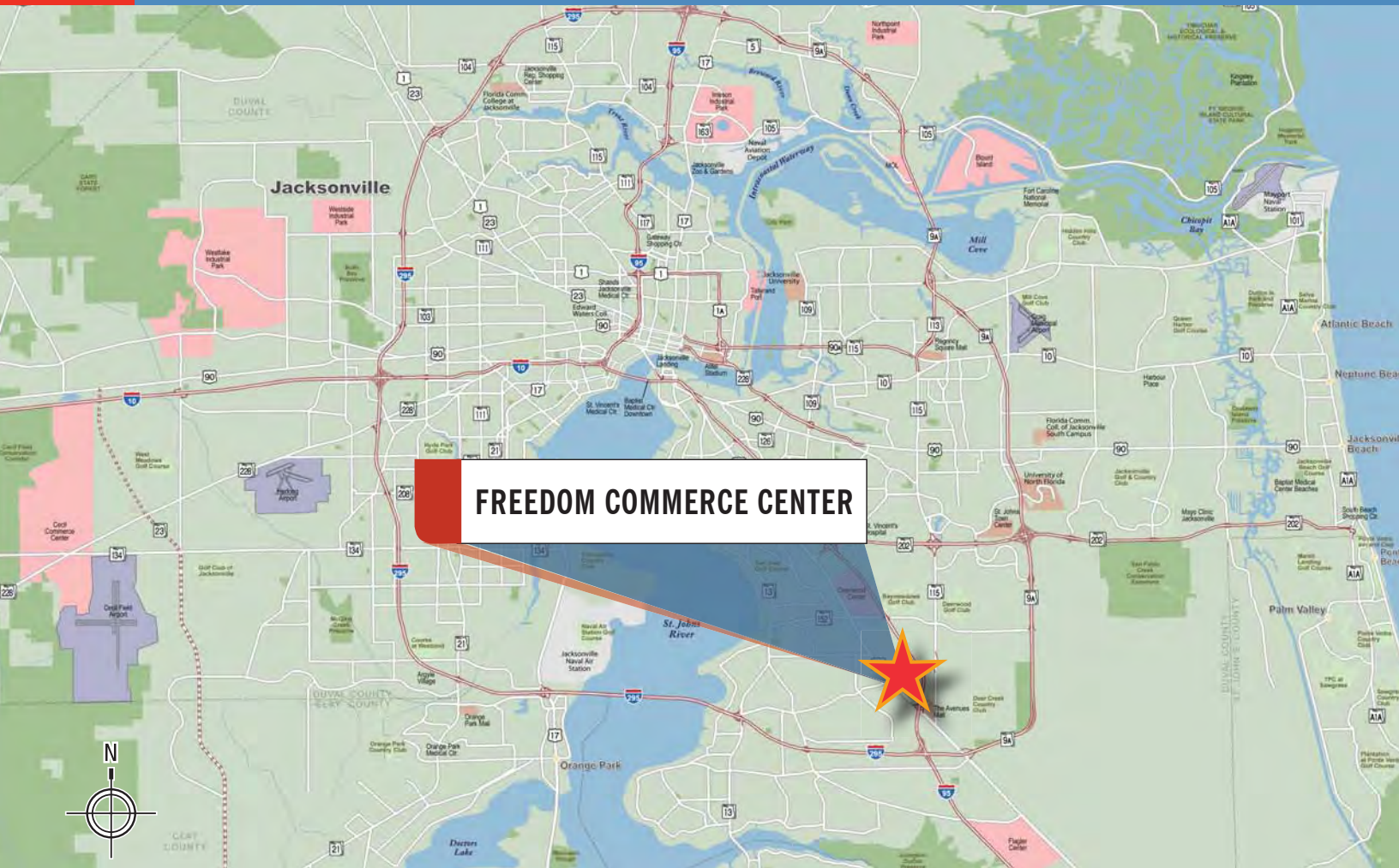


PARCEL D | 5.66 ACRES

BAYMEADOWS SUBMARKET SUMMARY

The Baymeadows submarket is bound by J. Turner Boulevard to the north, I-95 to the west and the Intracoastal Waterway to the east. Three-quarters of communities in this age group are 16 to 30 years in age.

- The vacancy rate in the Baymeadows submarket improved to 5.5% as of December, the lowest in the region.
- The area has gained an additional 90 renters in the past six months and 613 renters in the past two years.
- The average rent per month in the Baymeadows submarket is \$822, which is nearly 10% above the market average.
- Same-store rents fell by (-1.6%) in the past six months but are only down (-0.3%) for the year.
- One bedroom units rent for \$698 per month on average, 2-bedroom units \$894 per month, and 3-bedroom units rent for an average of \$1,126.
- There were (-5) units removed from the supply due to condo conversions at Heritage at Deerwood.



FREEDOM COMMERCE CENTER

EXCLUSIVELY PRESENTED BY

Cushman & Wakefield
Licensed Real Estate Brokers
13901 Sutton Park Drive South, Suite 170
Jacksonville, Florida 32224

Telephone: (904) 731-9500
Facsimile: (904) 731-7300

Logan Holz

Senior Director, Land Brokerage Services
(904) 380-8346 | logan.holz@cushwake.com

Bruce Erhardt, ALC

Executive Director, Land Brokerage Services
(813) 223-6300 | bruce.erhardt@cushwake.com



Brokers representing purchasers must look to their clients for a commission. No warranty of representation, expressed or implied, is made as to the accuracy of the information contained herein, and same is submitted subject to errors, omissions, change of price, rental or other conditions, withdrawal without notice, and to any special listing conditions imposed by our principals.