

LAND FOR SALE

SW Corner of E Sam Allen Rd & N Park Rd

Plant City, FL | 4.175 Acres Gross, 2.915 Acres Usable



LENNAR
NORTH
PARK isle

Meritage
Homes
Park East

Hillsborough County
New Public High School

South Florida
Baptist Hospital
BayCare Health System

STINGRAY
CHEVROLET

D.R. HORTON
America's Builder
Farm at
Varrera

Hillsborough County
New Public Elementary
& Middle School

SUBJECT
SITE

E Sam Allen Rd

N Park Rd



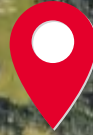
CITY
FURNITURE



PROPERTY AERIAL MAP



E Sam Allen Rd



South Florida
Baptist Hospital
BayCare Health System

N Park Blvd Rd

DEMOGRAPHICS (5 MILE RADIUS)

54,872

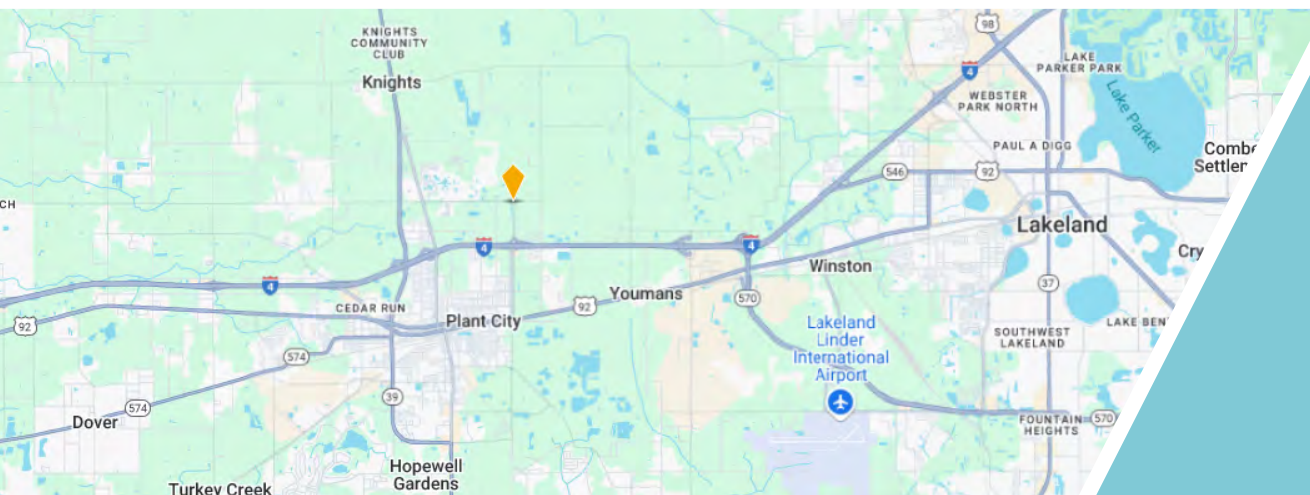
2024 POPULATION

38.3

MEDIAN AGE

\$68,981

AVERAGE HH INCOME



C1-A

ZONING

\$2,000,000

SALE PRICE

4.175 ACRES

GROSS LAND

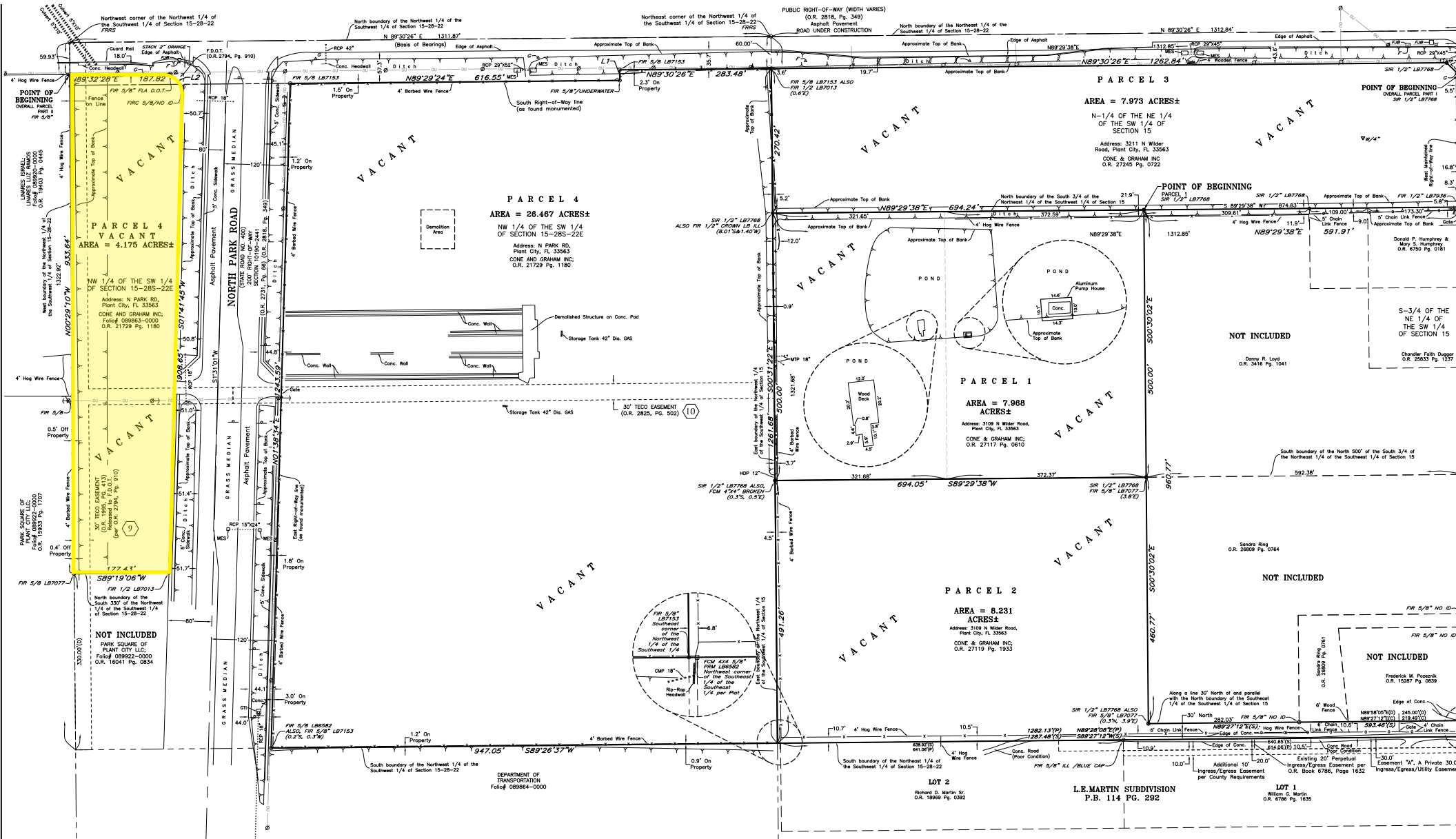
2.915 ACRES

MOL USABLE

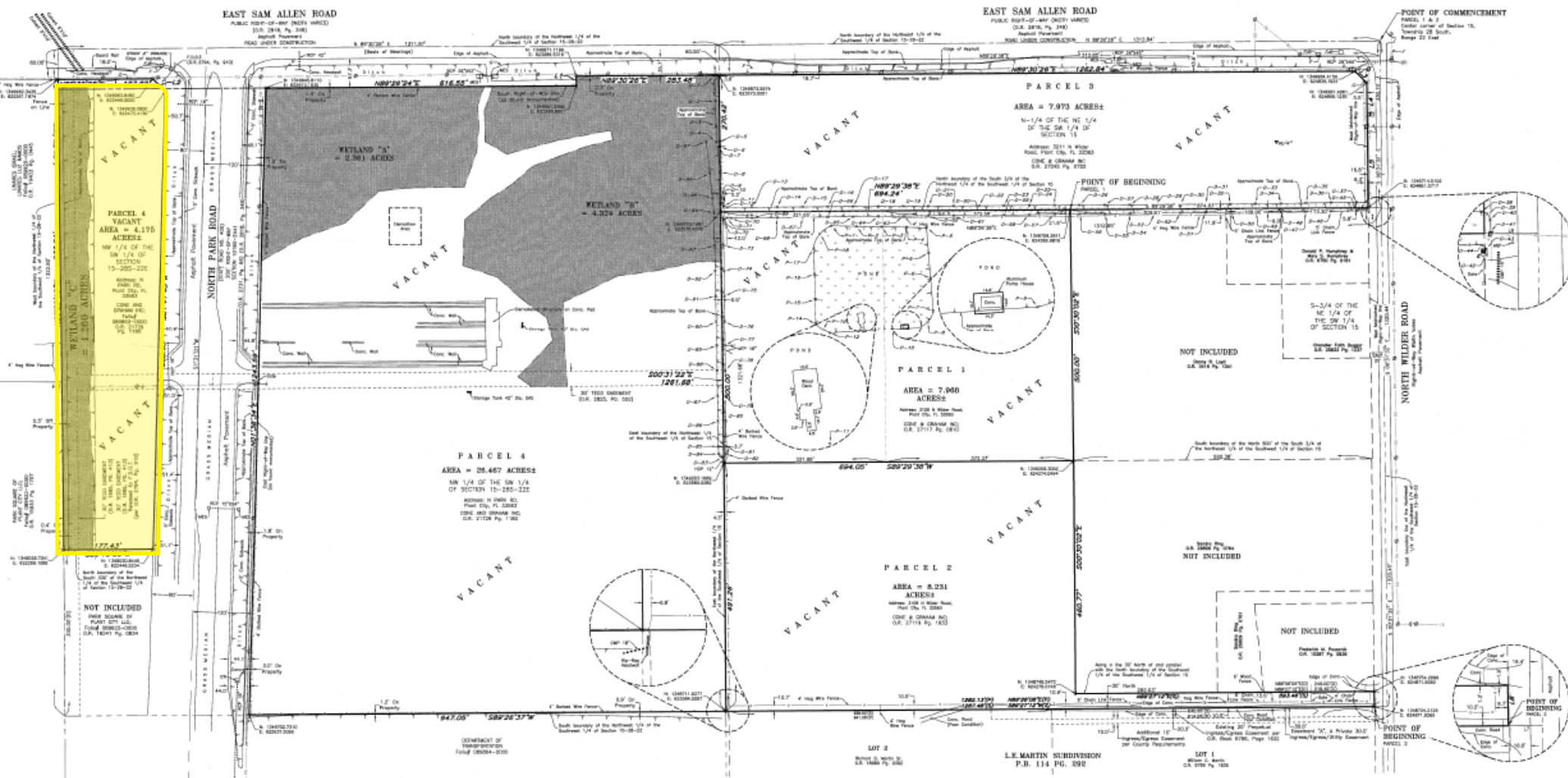
CLICK/SCAN
FOR MORE
PERMITTED USES



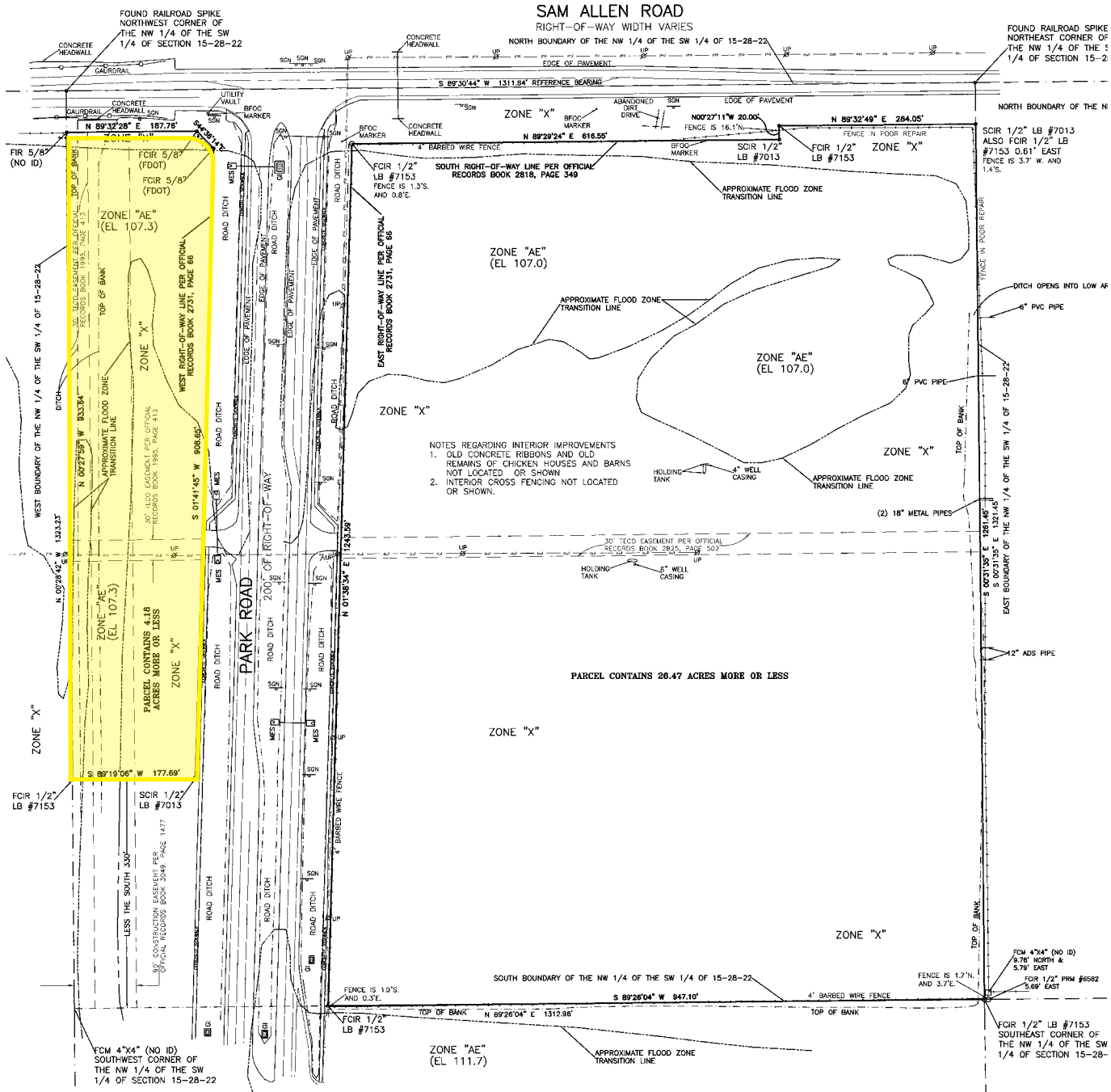
PROPERTY SURVEY



WETLANDS SURVEY



TOPOGRAPHY SURVEY



MARKET UPDATES



South Florida Baptist Hospital

Since 1953, South Florida Baptist Hospital has been a trusted and loved hospital for all of the community's health and wellness needs. Their compassionate and caring team of experts, including nearly 800 team members and 250 physicians, work diligently to make sure that you receive high-quality care when you visit the hospital. The new 204-bed replacement hospital that opened in the Spring of 2024 offers many more services than a standard community hospital, as they're part of the BayCare family of health care facilities.



Hillsborough County
PUBLIC SCHOOLS
Excellence in Education

Hillsborough County Public Schools (HCPS)

plans to build three new schools in Plant City. School sizes are to be determined. The School Board approved the purchase of land at the northeast corner of the intersection of N. Park Road and E. Sam Allen Road. A new middle school site is planned approximately two miles away at the southwest corner of the intersection of Charlie Taylor Road and Midway Road. The new middle school will sit across Midway Road from a new elementary school adjacent to the Farm at Varrea subdivision.



City Furniture

A Florida based retailer on a mission to change the way people live with beautiful home furnishings at incredible value. Their roots date back to the 1970s when they opened as Waterbed City, and over the years have evolved into a leading furniture and home accents destination. Style and value is at the core of everything they do, and with 23 showrooms across the state and an expansive e-commerce site, they're constantly evolving their lineup to bring customers the very best.



New Residential Developments

Discover peaceful suburban living in North Park Isle, Park East and the Farm at Varrera, master-planned communities with spacious single-family homes now selling in Plant City, FL. These communities offer hundreds of new, single-family homes, both single and two-story. Less than a mile away from I-4, these communities also offer easy access to Lakeland and Tampa. Residents can enjoy the amenities which include cabanas, resort-style pools, sport courts, and playgrounds.



Brian Breeding, CCIM
Managing Director
Office | Healthcare Brokerage
+1 813 204 5369
brian.breeding@cushwake.com

Bruce Erhardt
Executive Managing Director
Land Advisory
+1 813 204 5312
bruce.erhardt@cushwake.com