

17 RESIDENTIAL ACRES EXCLUSIVELY LISTED FOR SALE



Celery Avenue Sanford, Florida 32771

- Location:** Close to downtown Sanford and Lake Monroe on Celery Avenue, Sanford, just east of Scott Avenue and west of the Celery Key subdivision. Also fronts on 8th Street
- Size:** 17 acres +/-
- Land Use:** Suburban Estates (Seminole County); probable annexation into Sanford for higher density and utilities
- For Add'l Information:** www.celeryavesite.com



MARGERY H. JOHNSON
Senior Director - Land Brokerage
(407) 841-8000
margery.johnson@cushwake.com

800 N Magnolia Ave, Suite 450
Orlando, FL 32803

tel: (407) 841-8000
fax: (407) 425-6455

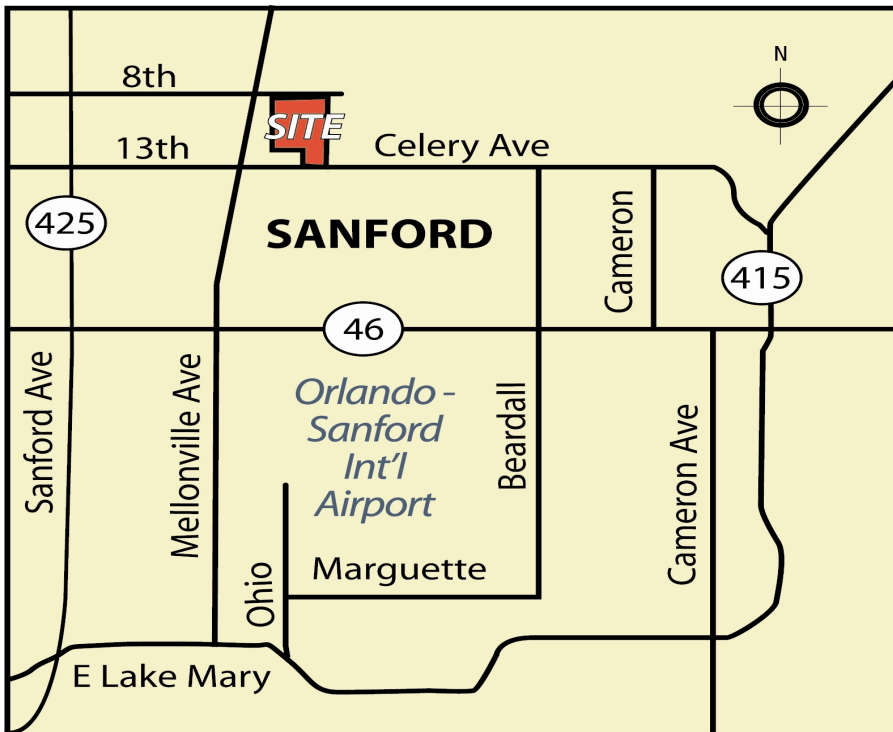
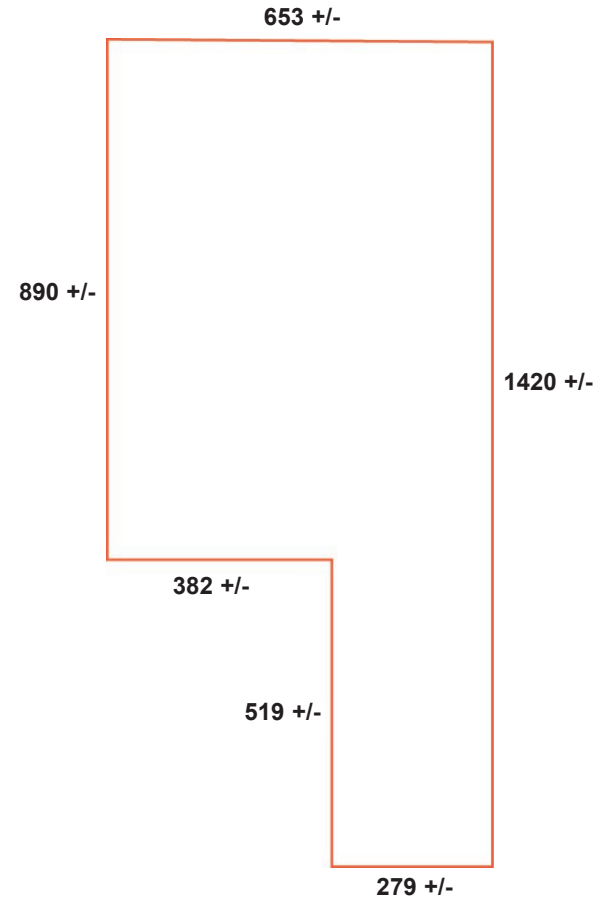


**CUSHMAN &
WAKEFIELD**
Global Real Estate SolutionsSM

17 RESIDENTIAL ACRES

CELERY AVENUE, SANFORD, FLORIDA

EXCLUSIVELY LISTED FOR SALE



MARGERY H. JOHNSON
407-841-8000

MARGERY.JOHNSON@CUSHWAKE.COM



No warranty or representation, expressed or implied, is made as to the accuracy of the information contained herein, and the same is submitted subject to errors, omissions, change of price, rental or other conditions, withdrawal without notice, and to any special listing conditions, imposed by our principals, Licensed RE broker. A commission computed and earned in accordance with the rates and conditions of our agency agreement with our principal, when received from our principal, will be paid to a cooperating broker who consummates a closing and transfer of the between our principal and purchaser. (A copy of the rates and conditions referred to above are available upon request.)